



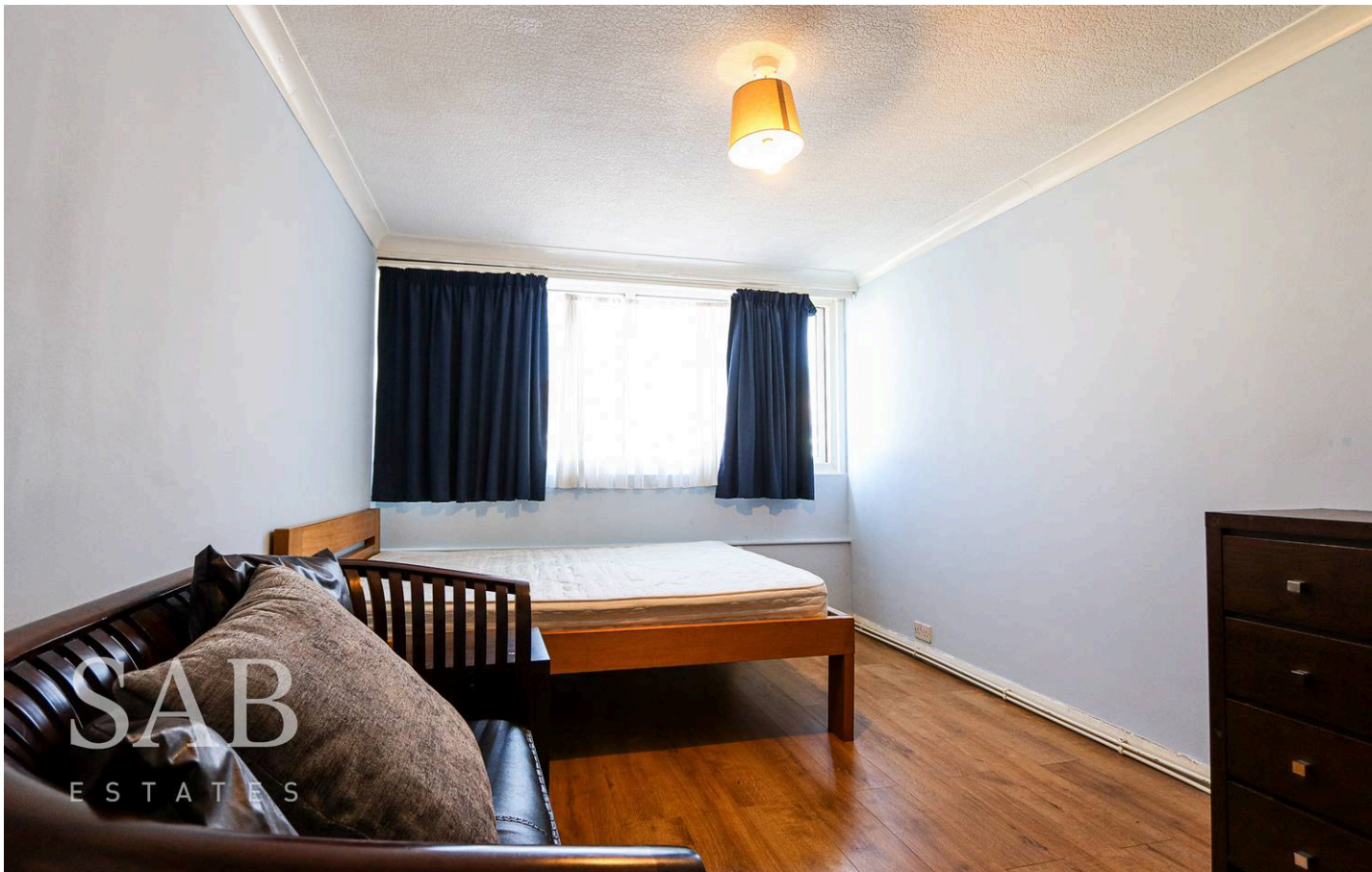
SAB  
ESTATES

Freshwater Court Lady Margaret Road, Southall

Guide Price £250,000

SAB  
ESTATES





## Freshwater Court, Lady Margaret Road

Southall

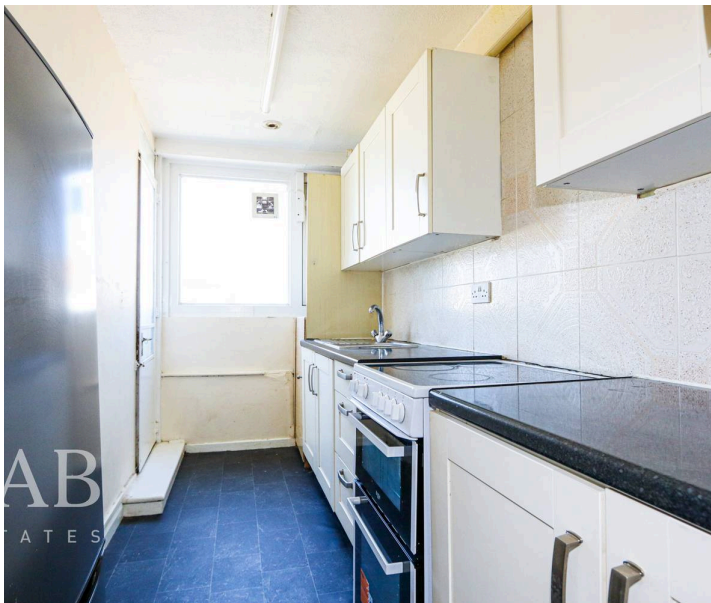
- Seconds from Local Amenities
- Newly Refurbished Bathroom
- Residents Parking
- Close to Well Regarded Schools
- 59 m2 / 635 ft2
- Leasehold: 101 Years Remaining
- Service Charge: £1,550 pa / Ground Rent: £50 pa

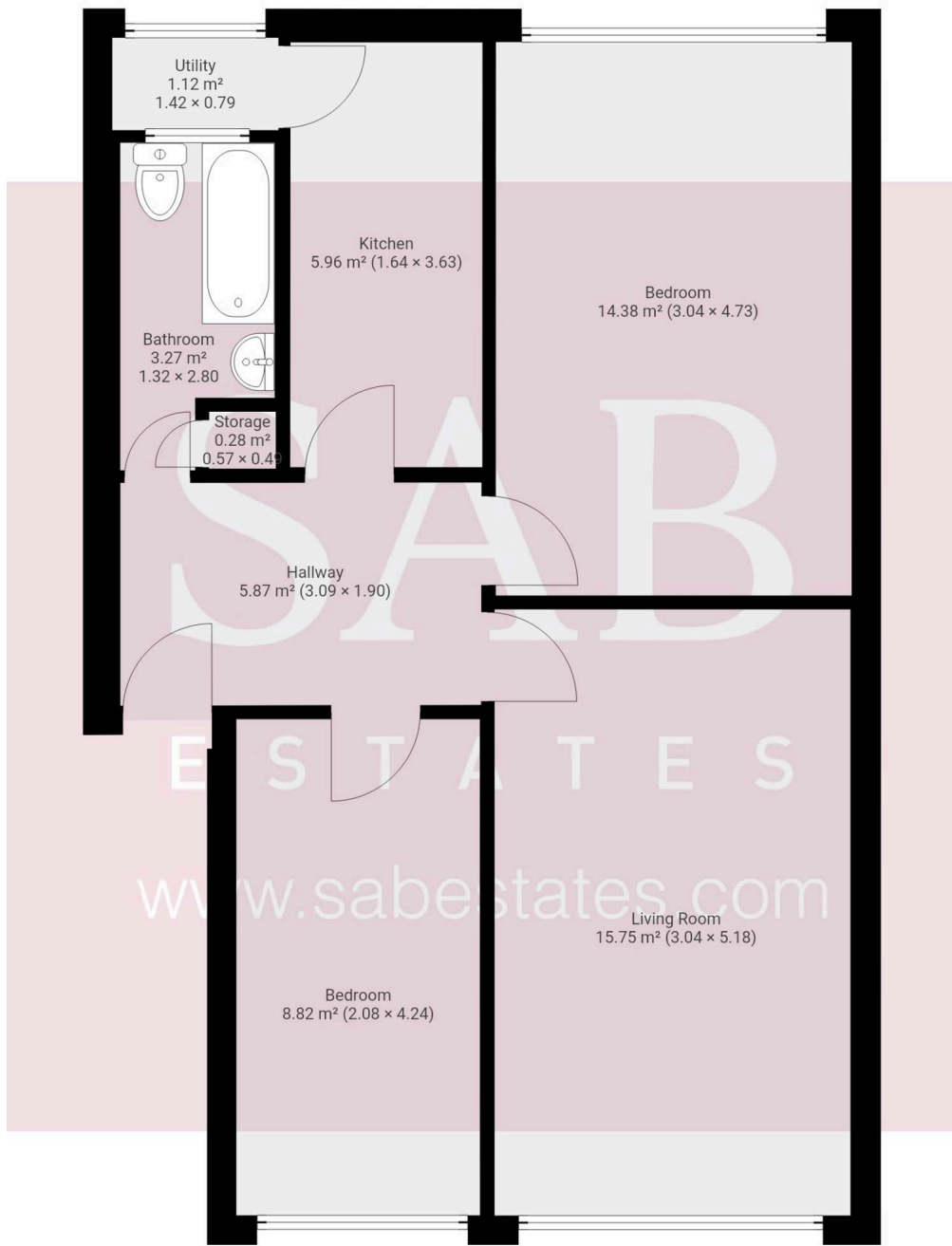
Council Tax band: B

Tenure: Leasehold

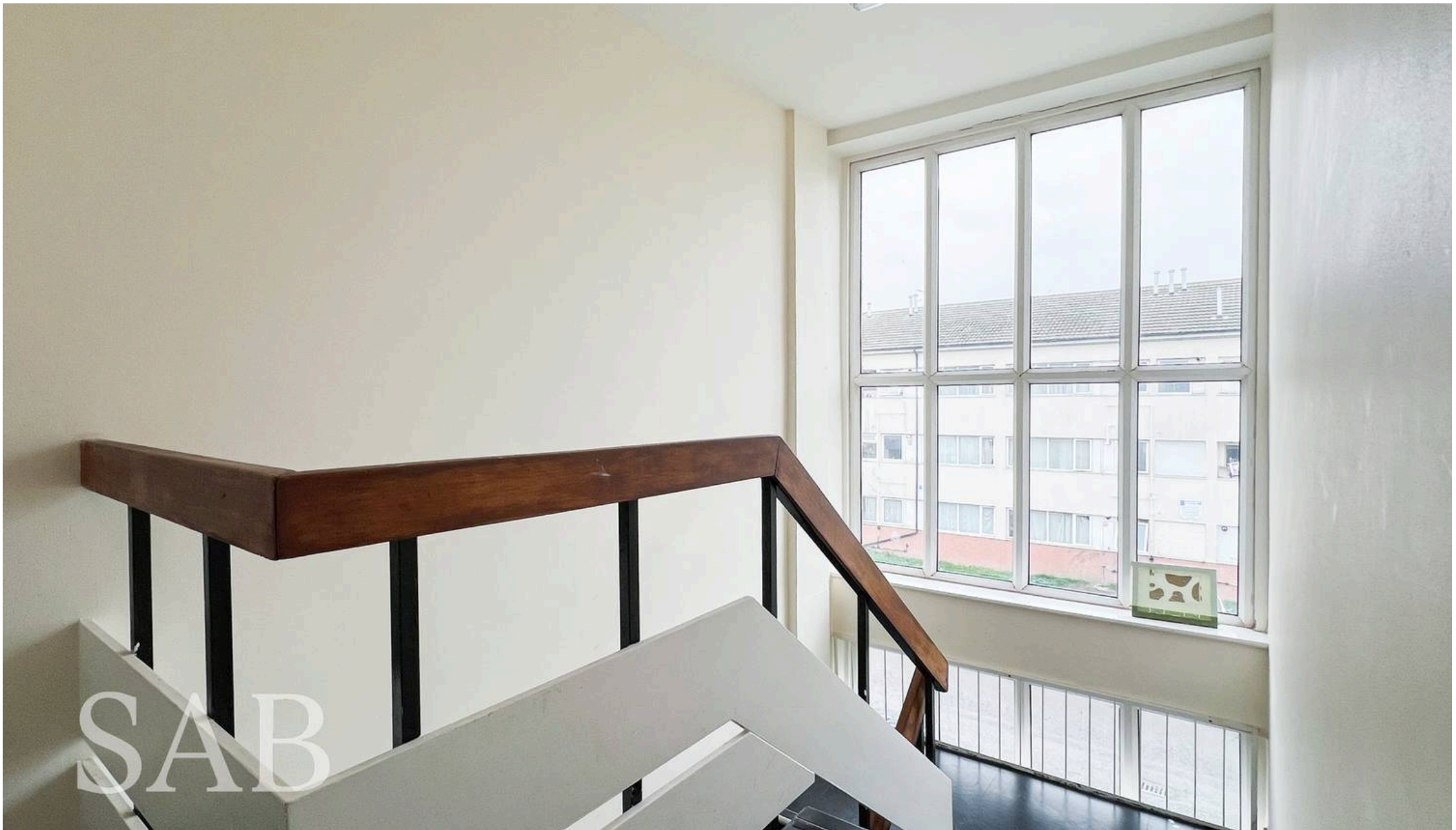
EPC Energy Efficiency Rating: C

EPC Environmental Impact Rating: C









## SAB Estates

236-238 Ruislip Road, Greenford - UB6 9RS

020 8575 2929 • [info@sabestates.com](mailto:info@sabestates.com) • [www.sabestates.com/](http://www.sabestates.com/)