



Bennett Park, Blackheath, SE3 9RB

£ Freehold

In need of full refurbishment, a four floor Victorian semi-detached house of over 2000 sq.ft. located in a quiet cul-de-sac in the very heart of Blackheath Village.

There is a garden at the rear, driveway parking and most of the sash windows have been replaced with timber double glazed units. No Chain.

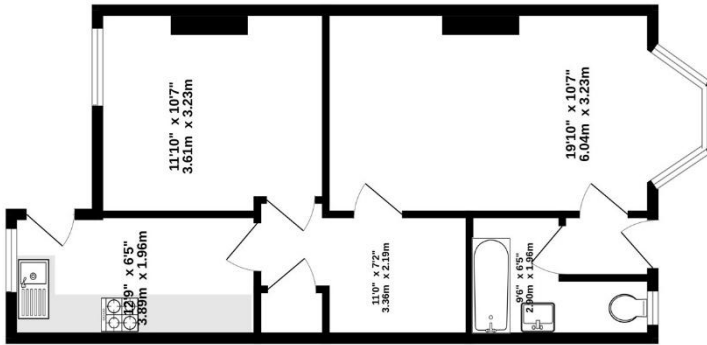




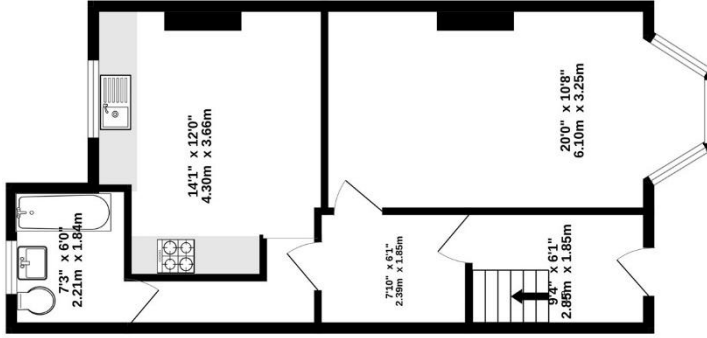
Viewing strictly by appointment through Comber & Company 020 8318 9666 sales@comberandco.co.uk

We have prepared these particulars in good faith to give a broad description of the property. Please note that we have not tested any of the services or appliances but have relied upon our own brief inspection and information supplied to us by the vendor. The buyer is therefore advised to obtain verification from their solicitor or surveyor.

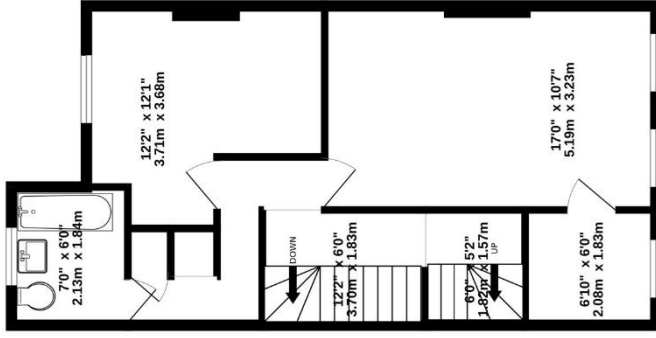
SEMI-BASEMENT
527 sq.ft. (48.9 sq.m.) approx.



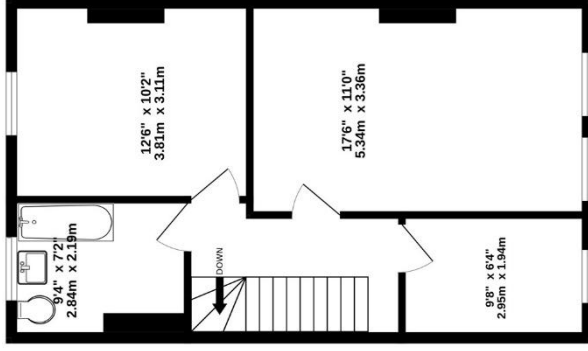
HALL FLOOR
523 sq.ft. (48.6 sq.m.) approx.



1ST FLOOR
515 sq.ft. (47.8 sq.m.) approx.



2ND FLOOR
509 sq.ft. (47.3 sq.m.) approx.



TOTAL FLOOR AREA : 2074 sq.ft. (192.6 sq.m.) approx.

Whilst every attempt has been made to ensure the accuracy of the floorplan contained here, measurements of doors, windows, rooms and any other items are approximate and no responsibility is taken for any error, omission or mis-statement. This plan is for illustrative purposes only and should be used as such by any prospective purchaser. The services, systems and appliances shown have not been tested and no guarantee as to their operability or efficiency can be given.
Made with Metropix ©2025