



55 Poppy Road, Princes Risborough - HP27 9DB
£485,000





55 Poppy Road

Princes Risborough, Princes Risborough

- WALKING DISTANCE TO STATION
- THREE BEDROOMS
- EN-SUITE
- OPEN PLAN KITCHEN / DINER
- BRIGHT & AIRY
- FAMILY BATHROOM
- DOWNSTAIRS CLOAKROOM
- PRIVATE GARDEN



55 Poppy Road

Princes Risborough, Princes Risborough

Immaculate 3-bed semi-detached near station. Modern layout, en-suite master, open-plan kitchen/diner, airy ambience, family bathroom, garden. Ideal contemporary living.

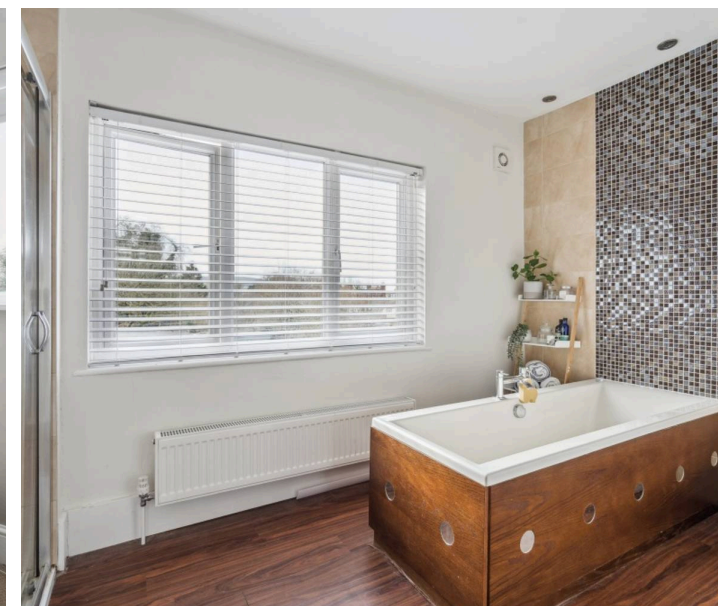
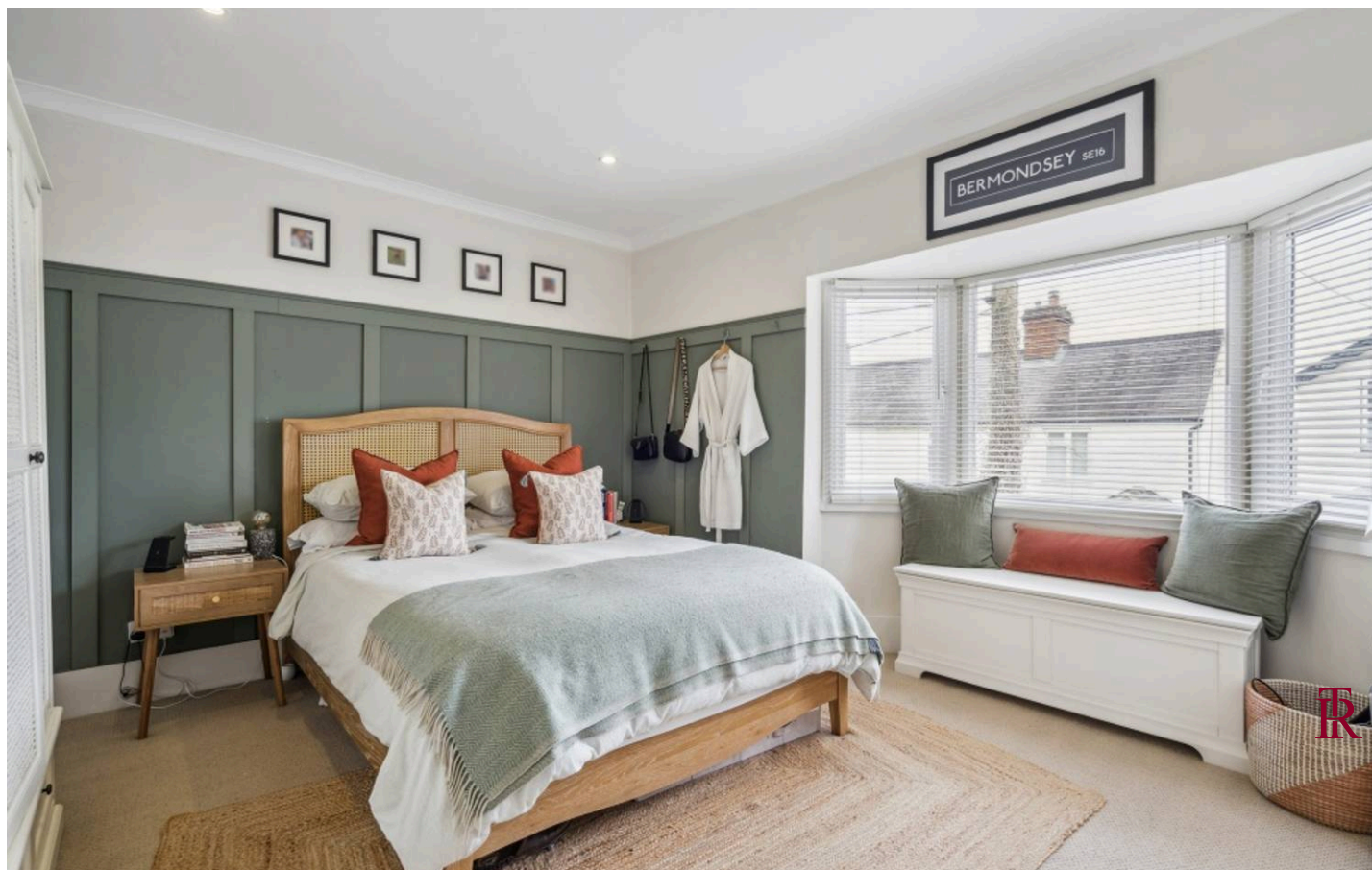
Presenting a superb opportunity to acquire this immaculately presented 3 bedroom semi-detached house, conveniently situated in close proximity to the station. Boasting a modern layout, the property features three generously proportioned bedrooms, with a sleek en-suite in the master bedroom. The heart of the home lies in the inviting open-plan kitchen/diner area, offering a perfect space for entertaining and dining. The property exudes a bright and airy ambience, creating a comfortable and welcoming atmosphere throughout. Additional highlights include a well-appointed family bathroom and a convenient downstairs cloakroom for added functionality. With a harmonious blend of style, space, and convenience, this property presents an exceptional opportunity for those seeking a contemporary living experience. The rear garden is a good size and has been well maintained.

Council Tax band: D

Tenure: Freehold

EPC Energy Efficiency Rating: E

EPC Environmental Impact Rating: E





Ground Floor

First Floor

Second Floor

Approximate Gross Internal Area
 Ground Floor = 50.7 sq m / 546 sq ft
 First Floor = 31.8 sq m / 342 sq ft
 Second Floor = 25.4 sq m / 273 sq ft
 Total = 107.9 sq m / 1,161 sq ft

This plan is for layout guidance only. Not drawn to scale unless stated. Windows and door openings are approximate. Whilst every care is taken in the preparation of this plan, please check all dimensions, shapes and compass bearings before making any decisions reliant upon them.

© CJ Property Marketing Ltd Produced for Tim Russ & Company



Tim Russ and Company

Tim Russ Ltd, 1 High Street - HP27 0AE

01844 275522 • p.risborough@timruss.co.uk • timruss.co.uk/

