

Flat 14, Imperial Court, Tooting / Streatham CR4

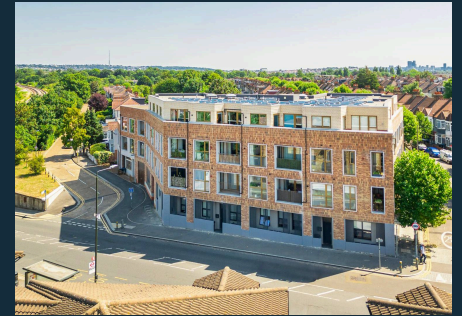
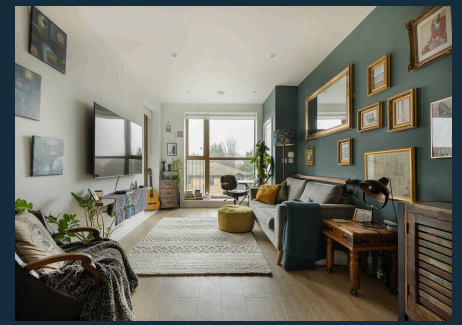
£350,000 Leasehold



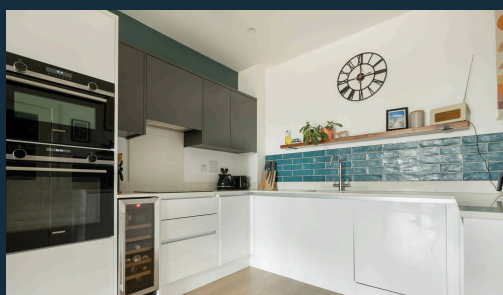
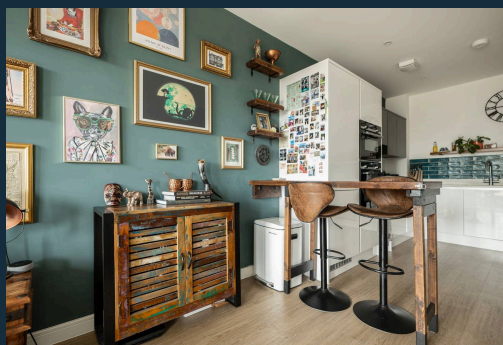
haboodle

This high-spec, immaculate home offers modern living within a thriving South London community. Just a short commute to Central London, it enjoys a wealth of good local shops, cafes, and bars. Offered with an allocated space in a secure underground car park.

The exceptional quality and finish are immediately evident upon entering this second-floor apartment. The spacious hallway with Karndean flooring provides direct access to the modern open-plan kitchen and lounge, bright double bedroom, and sleek contemporary bathroom. The open-plan lounge and kitchen area is bathed in natural light, thanks to stunning floor-to-ceiling windows, providing seamless access to the private balcony—perfect for enjoying the afternoon sunshine and sunsets. The contemporary kitchen boasts luxury stone worktops and premium integrated appliances, including a fridge freezer, built-in wine cooler, full-size dishwasher, Siemens oven, and micro/convection oven. Tastefully decorated in neutral, vibrant tones, this versatile space is ideal for entertaining or relaxing.



- › One Bedroom
- › Modern Fitted Kitchen & Integrated Appliances
- › Private Balcony
- › Excellent EPC Rating (B)
- › Secure Underground Car Park & Bike Storage
- › Gas Central Heating
- › Large Communal Garden
- › Long Lease
- › Superb Transport Links
- › Fantastic Local Amenities



## Imperial Court - CR4

Approximate Gross Internal Area = 51.1 sq m / 550 sq ft

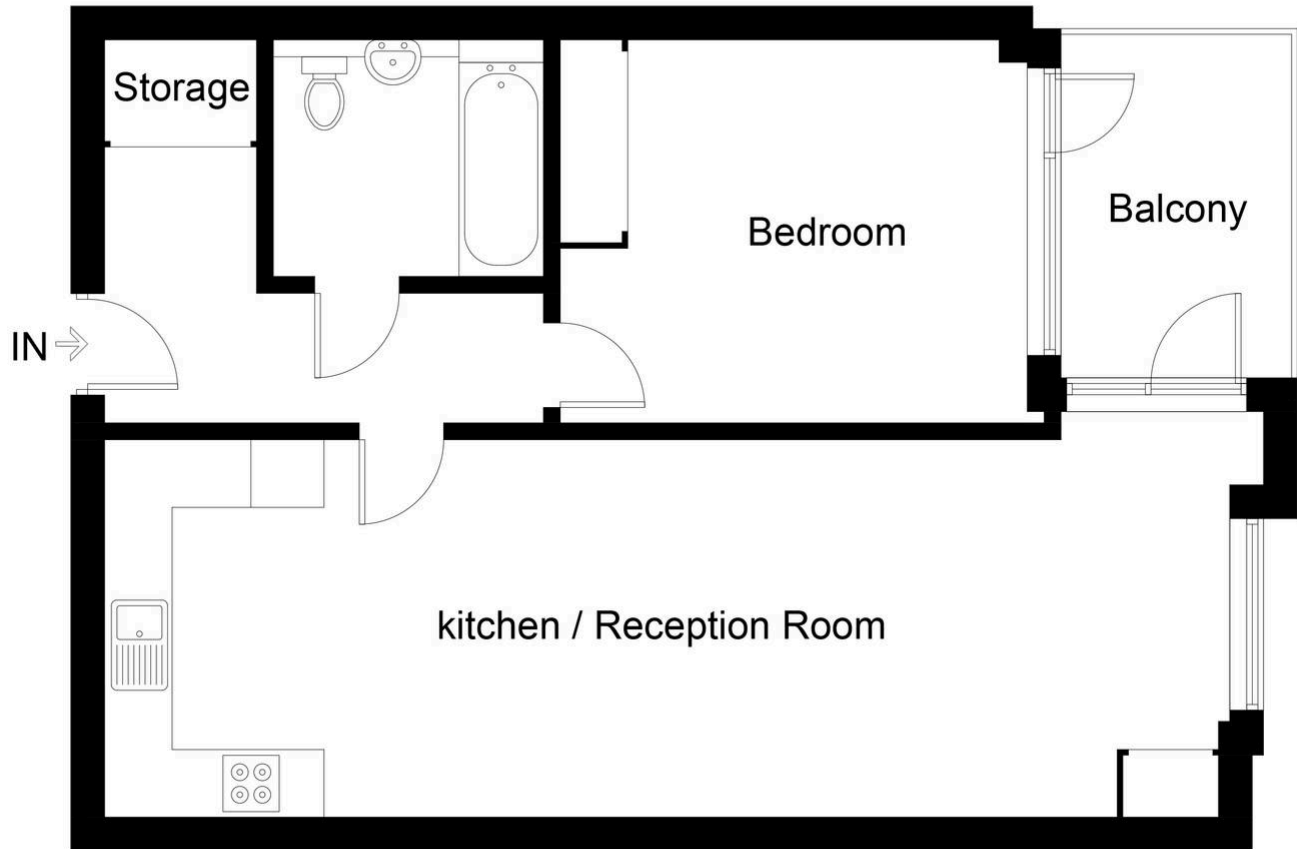


Illustration for identification purposes only, measurements are approximate, not to scale. Produced by Haboodle Estate Agents (ID1163151)