

**Columbia Way, Westwood,  
East Kilbride, G75 8JW**

Joyce Heeps Homes are delighted to market this three-bedroom mid terraced villa which would make an ideal family home. It is close to local primary and secondary schools, sports and recreational facilities regular bus and rail services.



**Features**

Lounge/dining area

Modern kitchen

Family shower room

Enclosed rear garden

Gas central heating

UPVC double-glazing

Close to Duncanrig Secondary School,  
and East Milton Primary

Convenient for Hairmyres Train  
Station and regular bus services

**East Kilbride's Local Estate Agent**

[www.joyceheepshomes.com](http://www.joyceheepshomes.com)  
[info@joyceheepshomes.co.uk](mailto:info@joyceheepshomes.co.uk)

**Joyce Heeps Homes Ltd**  
E.K. Business Park  
14 Stroud Road  
East Kilbride  
G75 0YA



### **Description**

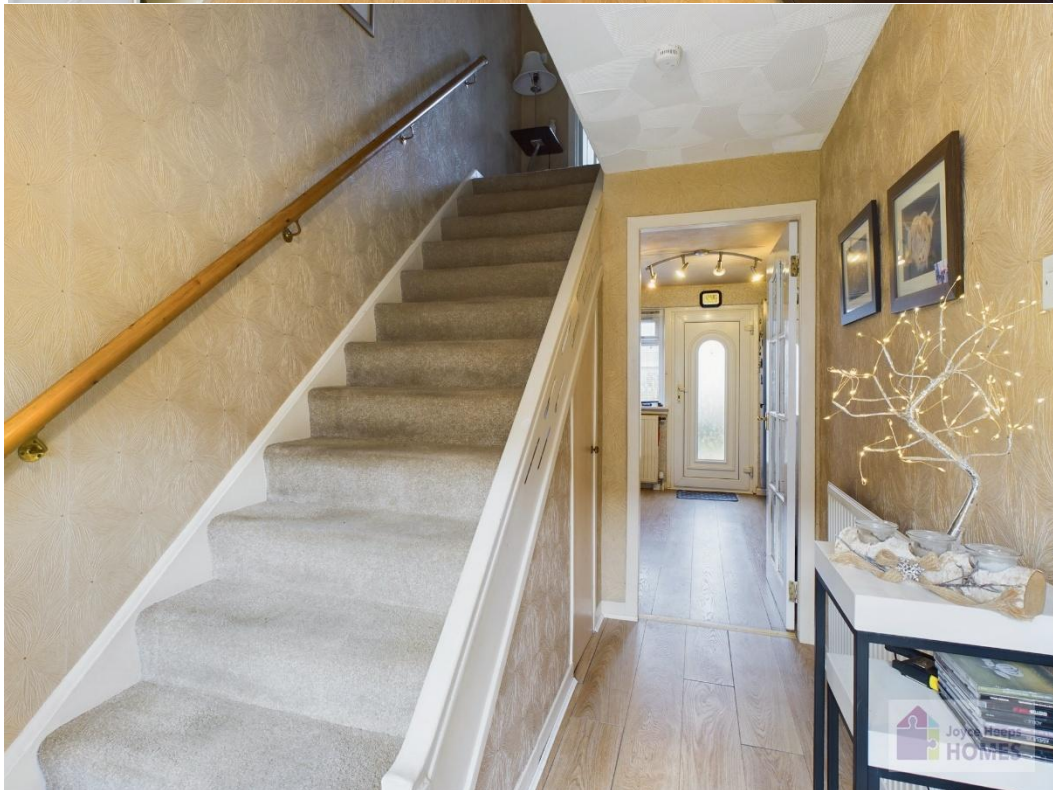
This three-bedroom terraced villa is well maintained throughout and has many features listed.



**East Kilbride's Local Estate Agent**

[www.joyceheepshomes.com](http://www.joyceheepshomes.com)  
[info@joyceheepshomes.co.uk](mailto:info@joyceheepshomes.co.uk)

**Joyce Heeps Homes Ltd**  
E.K. Business Park  
14 Stroud Road  
East Kilbride  
G75 0YA



**East Kilbride's Local Estate Agent**

[www.joyceheepshomes.com](http://www.joyceheepshomes.com)  
[info@joyceheepshomes.co.uk](mailto:info@joyceheepshomes.co.uk)

**Joyce Heeps Homes Ltd**  
E.K. Business Park  
14 Stroud Road  
East Kilbride  
G75 0YA



It comprises on the ground level of the entrance hallway, spacious lounge dining room and modern fitted kitchen.



**East Kilbride's Local Estate Agent**

[www.joyceheepshomes.com](http://www.joyceheepshomes.com)  
[info@joyceheepshomes.co.uk](mailto:info@joyceheepshomes.co.uk)

**Joyce Heeps Homes Ltd**  
E.K. Business Park  
14 Stroud Road  
East Kilbride  
G75 0YA



The upper level comprises of three well-proportioned bedrooms all with ample storage and family shower room.



**East Kilbride's Local Estate Agent**

[www.joyceheepshomes.com](http://www.joyceheepshomes.com)  
[info@joyceheepshomes.co.uk](mailto:info@joyceheepshomes.co.uk)

**Joyce Heeps Homes Ltd**  
E.K. Business Park  
14 Stroud Road  
East Kilbride  
G75 0YA



The property is decorated throughout in neutral tones, has ample storage and the loft can be accessed from the upper landing.



**East Kilbride's Local Estate Agent**

[www.joyceheepshomes.com](http://www.joyceheepshomes.com)  
[info@joyceheepshomes.co.uk](mailto:info@joyceheepshomes.co.uk)

**Joyce Heeps Homes Ltd**  
E.K. Business Park  
14 Stroud Road  
East Kilbride  
G75 0YA



The front garden is laid to lawn. The enclosed rear garden has artificial lawn, slab patio area and decking and is surrounded by timber perimeter fencing.



**East Kilbride's Local Estate Agent**

[www.joyceheepshomes.com](http://www.joyceheepshomes.com)  
[info@joyceheepshomes.co.uk](mailto:info@joyceheepshomes.co.uk)

**Joyce Heeps Homes Ltd**  
E.K. Business Park  
14 Stroud Road  
East Kilbride  
G75 0YA



**The council tax band is C**

### **Location**

The property is situated within Westwood convenient for Hairmyres Train Station, regular bus services and East Kilbride Town Centre. It is close to all local amenities and primary and secondary schools, and East Kilbride boasts a wide and varied range of shops and amenities, including sports centres and numerous recreational facilities.



**East Kilbride's Local Estate Agent**

[www.joyceheepshomes.com](http://www.joyceheepshomes.com)  
[info@joyceheepshomes.co.uk](mailto:info@joyceheepshomes.co.uk)



**Joyce Heeps Homes Ltd**  
E.K. Business Park  
14 Stroud Road  
East Kilbride  
G75 0YA



## **Joyce Heeps Homes Ltd.**

For more information or to advise your interest please contact:

**Joyce Heeps Homes Ltd**  
**East Kilbride Business Park**  
**Stroud Road**  
**East Kilbride**  
**G75 0YA**

**Tel: 01355 571 883**  
**Email: [joyce@joyceheepshomes.co.uk](mailto:joyce@joyceheepshomes.co.uk)**

Please note that this schedule has been prepared by us, based on the information provided by our client. Photographs and text are for illustrative purposes only. We believe them to be correct, however, no guarantee is offered or implied. If there is any aspect of this schedule that you wish clarified or that you find misleading, please contact our office where further information is available.

No tests have been made of services, equipment or fittings. No warranty is given or implied as to the condition of buildings services, fixtures, fittings etc. All measurements, distances and acres are approximate. Fixtures, fittings and other items are not included unless specified.



# **East Kilbride's Local Estate Agent**

[www.joyceheepshomes.com](http://www.joyceheepshomes.com)  
[info@joyceheepshomes.co.uk](mailto:info@joyceheepshomes.co.uk)