



Flat 7, Copperfields Prospero Way, Swindon

Swindon

£155,000

mcFarlane
property.com



Flat 7

Copperfields Prospero Way, Swindon

Nestled in the sought-after Haydon End location, this TOP FLOOR APARTMENT offers a perfect blend of comfort and convenience. Boasting an IMPRESSIVE VIEW OVER a PARK, this TWO DOUBLE BEDROOM abode is sure to captivate all those seeking a cosy retreat in a thriving community.

As you step inside, you are greeted by a tastefully designed interior that exudes warmth and charm. The property features two generously sized bedrooms, each providing a peaceful sanctuary for relaxation. The LEASE TERM REMAINING of 129 years offers peace of mind for the future, making this an attractive prospect.

One of the features of this apartment is the ALLOCATED PARKING, ensuring you always have a secure spot waiting for you. Residents can enjoy the ease of access to amenities while also benefiting from a tranquil setting overlooking the park.

Presented in EXCELLENT CONDITION THROUGHOUT, this apartment is a true gem waiting to be discovered, an inviting atmosphere that immediately feels like home.

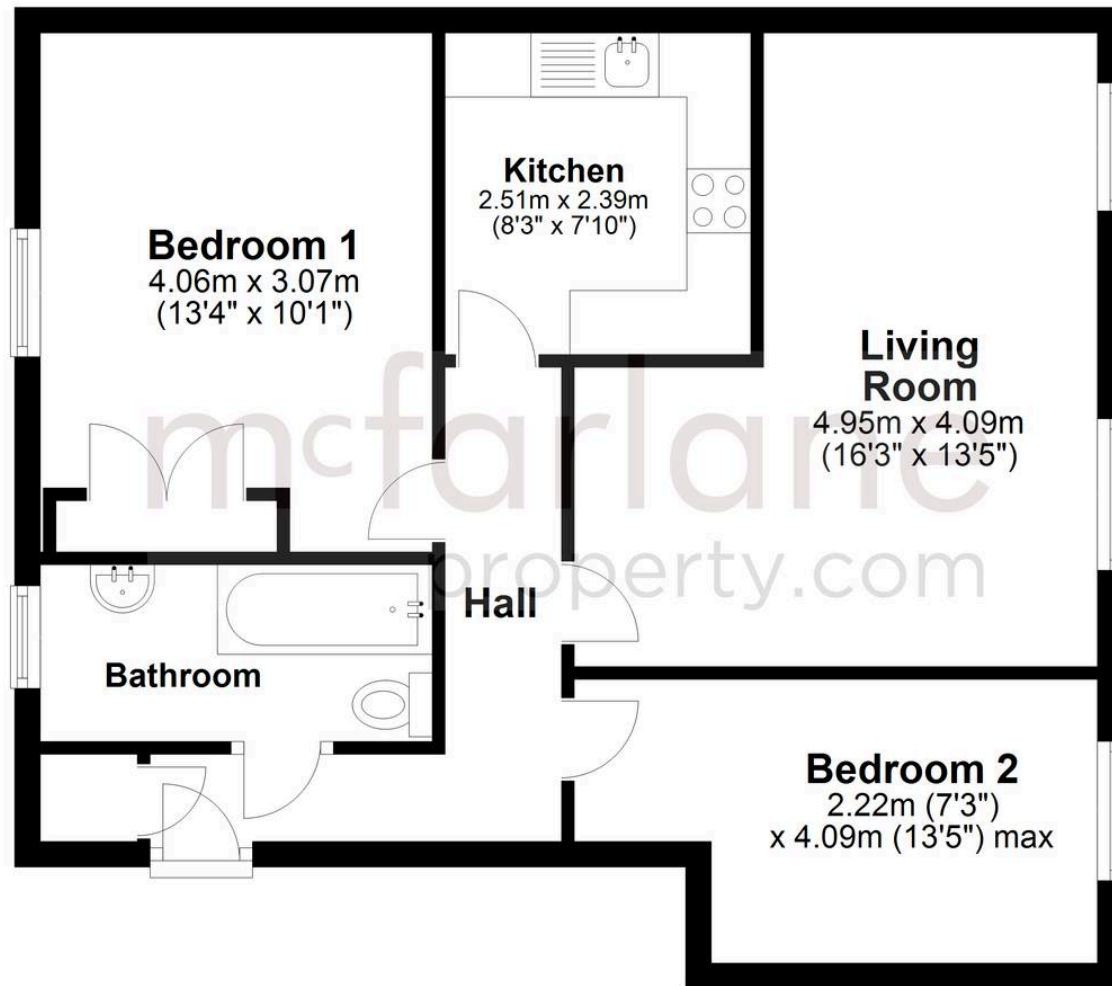


- TOP FLOOR APARTMENT
- TWO DOUBLE BEDROOMS
- LEASE TERM REMAINING 129 YEARS
- ALLOCATED PARKING
- VIEW OVER PARK
- CLOSE TO LOCAL SHOPS AND SCHOOLS
- POPULAR HAYDON END LOCATION
- EXCELLENT CONDITION THROUGHOUT
- IDEAL FIRST TIME PURCHASE



Top Floor

Approx. 55.1 sq. metres (593.0 sq. feet)



Total area: approx. 55.1 sq. metres (593.0 sq. feet)

McFarlane Sales & Lettings

North Swindon, Redhouse Village Centre, Swindon - SN25 2FW

01793 296600 • swindon@mcfarlaneproperty.com • www.mcfarlaneproperty.com/