



4 Bedrooms



2 Bath/Shower Rooms
1 Cloakroom



3 Reception Rooms



Off-Street Parking for 2-3
Vehicles



South East Facing Rear
Garden



EPC Band D

Council Tax

Band: C

£2,184.15 Apr '24-Mar '25.

Local Authority

Welwyn & Hatfield Borough
Council

 **ashtons**
for life's great moves

Harwood Hill, Welwyn Garden City, AL8 7AP
Guide Price £675,000 Freehold

Harwood Hill, Welwyn Garden City

A spacious and extended family home with well planned living accommodation in a popular West Side turning.

Description

An attractive, traditional 'Garden City' style semi detached home which has been extended to offer substantial family living space.

The house benefits from a fantastic corner plot and is well presented throughout.

There is a dual aspect living room, separate dining area, study, cloakroom and fitted kitchen on the ground floor with four bedrooms - the main one benefiting from a modern en-suite shower room - and a separate family bathroom on the first floor.

For comfort and economy, gas heating serves radiators and double glazing is fitted.

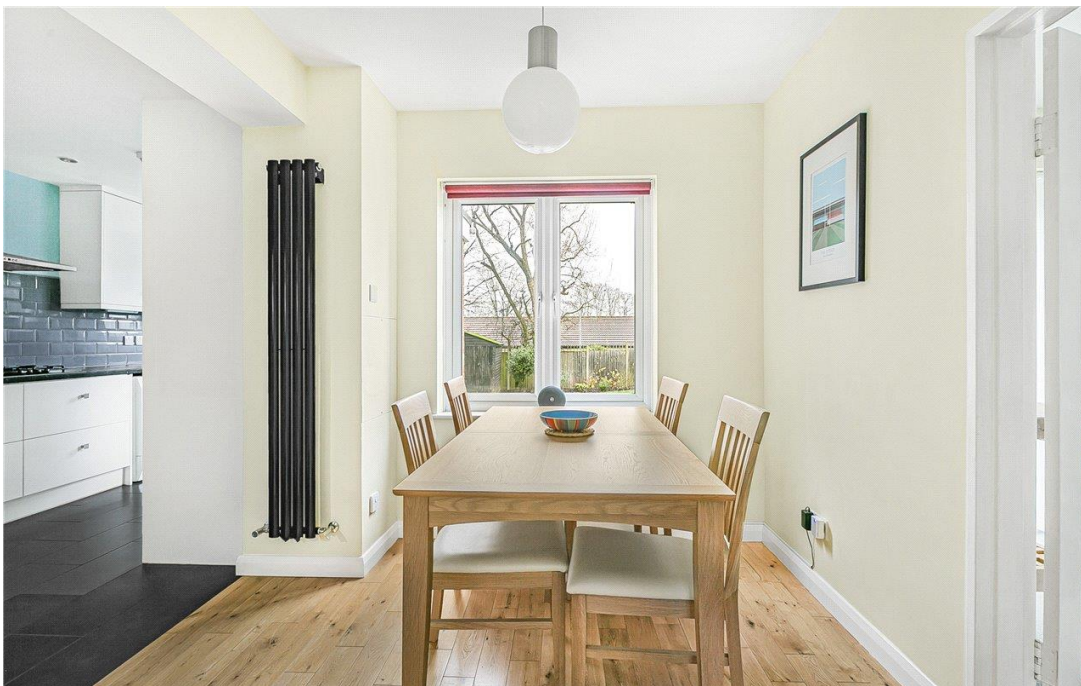
The rear garden is laid predominately to lawn and the front benefits from off-street parking for two-three cars.



Location

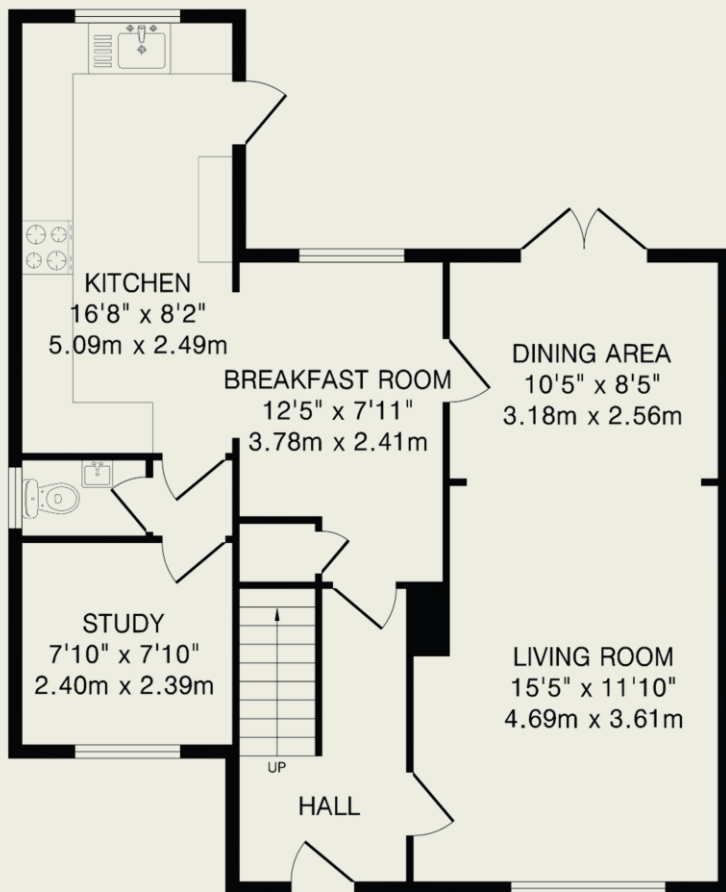
The property enjoys a great position in the road. Harwood Hill Primary School is a short walk away and Monks Walk Secondary School and the local parade of shops are also situated close by.





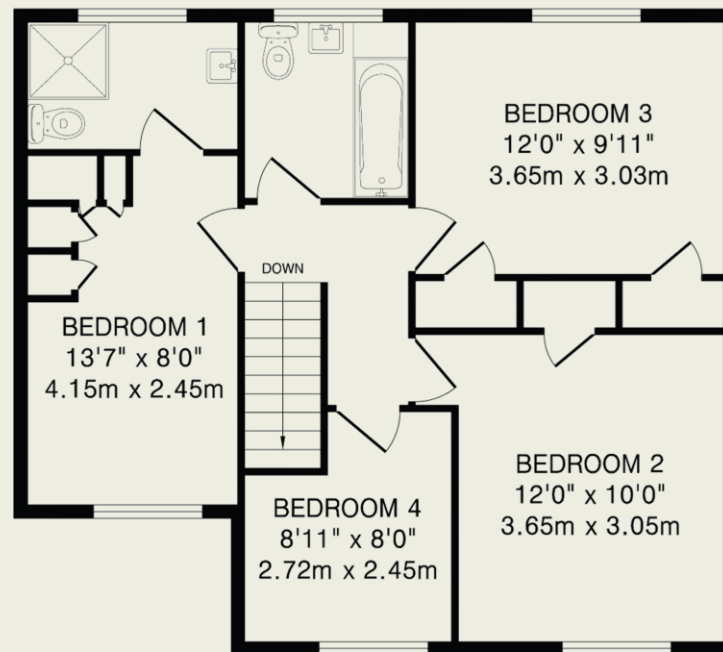
Important Information

These particulars do not constitute an offer or contract in whole or part. The statements contained herein are made without responsibility on the part of Ashtons or the vendors and they cannot be relied upon as representatives of fact. In respect of floor plans, these are for illustrative purposes only. The measurement and position of each element is approximate and must be viewed as such. Intending purchasers should therefore satisfy themselves by inspection or otherwise as to their correctness. The vendors do not make or give, and neither Ashtons nor any person in their employment has any authority to make or give, any representation or warranty whatsoever in relation to this property. We offer a wide range of services through third party providers including solicitors, surveyors, removal firms, mortgage providers and EPC suppliers. We receive additional payments for administering suppliers quoting software and making referrals. You are not under any obligations to use these services and it is your discretion whether you choose to deal with these parties or your own preferred supplier. You should be aware the average payment we received in 2021 equated to £48.36 per referral.



Ground Floor

681 sq.ft.(63.2 sq.m)approx.



First Floor

605 sq.ft.(56.2 sq.m)approx.

TOTAL FLOOR AREA: 1286 sq.ft.(119.4 sq.m)approx.

This floorplan is for illustration purposes only. The measurements and position of each element are approximate and must be viewed as such.