



Risingham Mead, Westlea - SN5 7AZ

Swindon

Guide Price **£250,000**

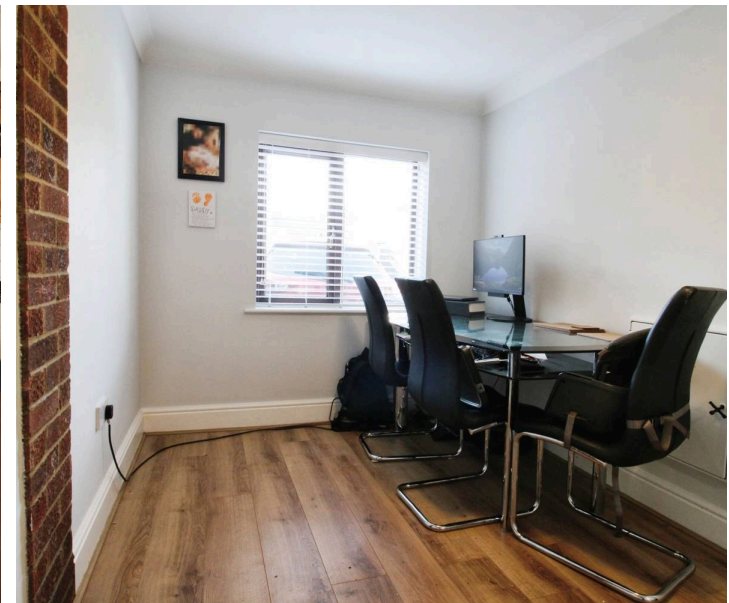
mcfarlane
property.com

Risingham Mead

Westlea, Swindon

- 2 Spacious Bedrooms
- Updated and Modernised
- Ideal for First Time Buyers or Investors
- Ideal for Working From Home
- Ability to make a Guest Room / Third Bedroom
- Off Road Parking for TWO

This spacious 2 BEDROOM home is ideal for First Time Buyers or Investors. In the sought after area of West Swindon, Risingham Mead benefits from having a quiet cul-de-sac feel but only being 0.8 miles away from the popular Shaw Ridge Leisure Park.



Risingham Mead

Westlea, Swindon

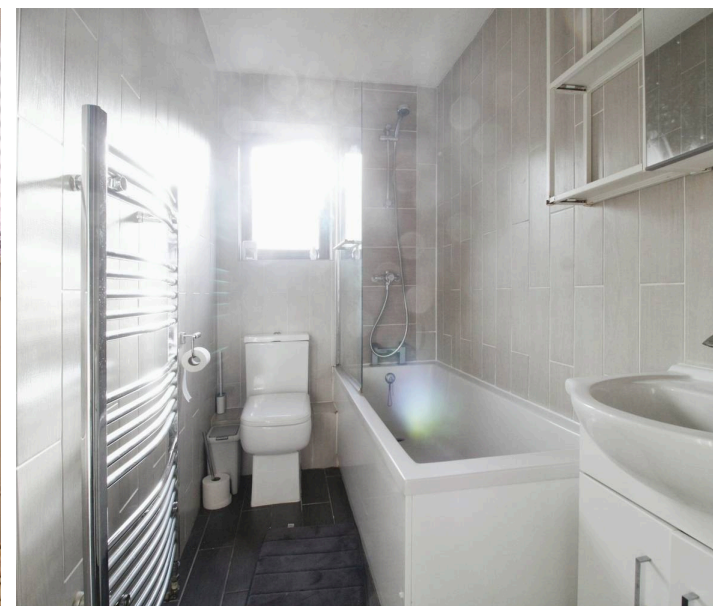
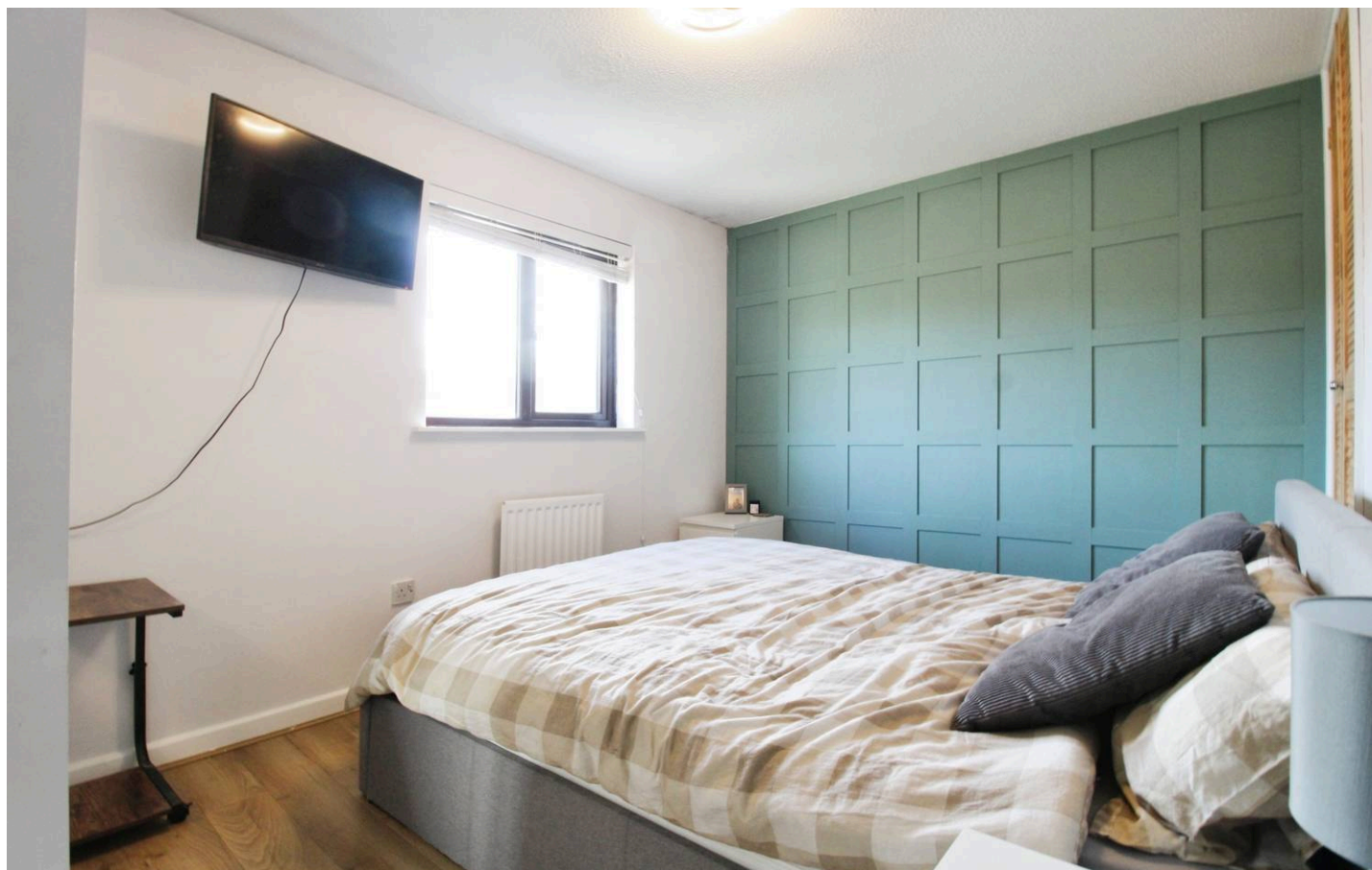
Being less than a mile away from the A3102 giving ease of access to the M4, to travel further afield to places like, London, Reading, Bristol and further connections to more local towns such as Cirencester and Gloucester
Council Tax band: C

Tenure: Freehold

EPC Energy Efficiency Rating: C

EPC Environmental Impact Rating: D

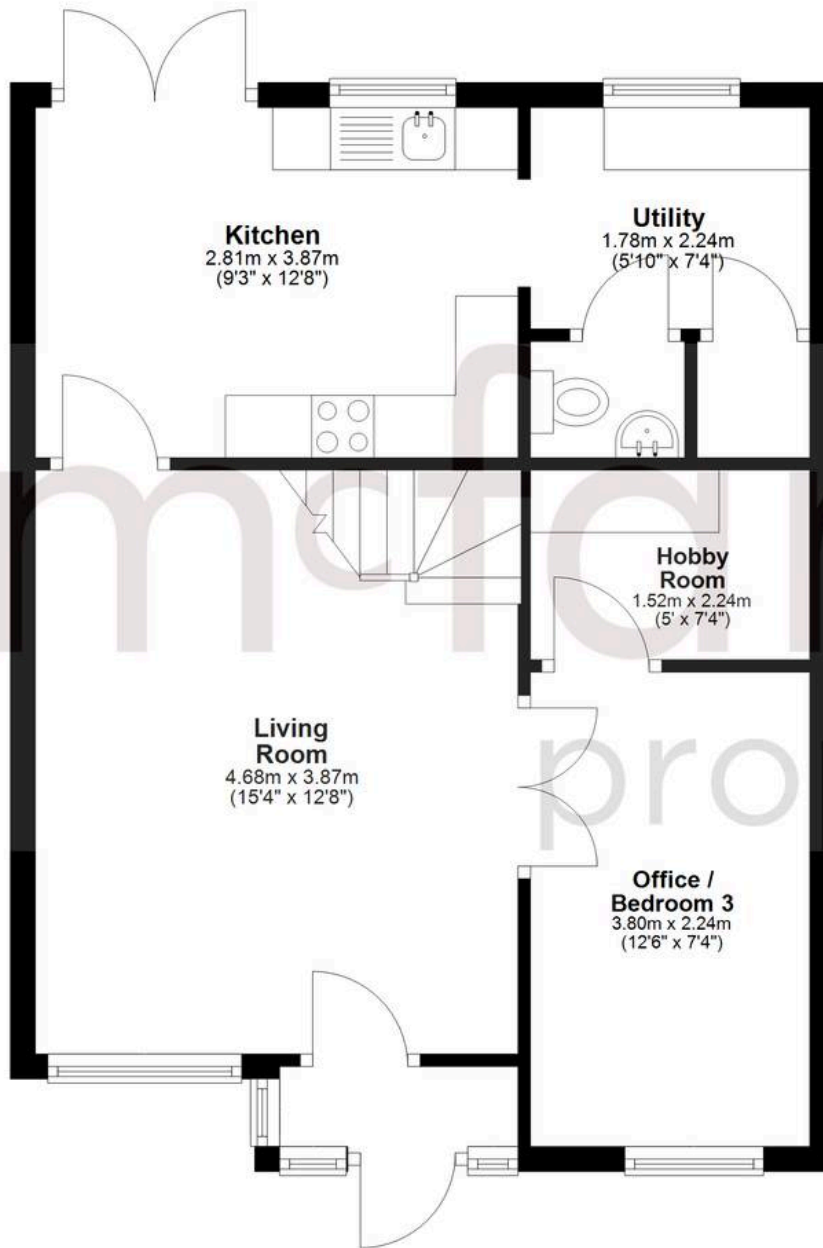
- 2 Spacious Bedrooms
- Updated and Modernised
- Ideal for First Time Buyers or Investors
- Ideal for Working From Home
- Ability to make a Guest Room / Third Bedroom
- Off Road Parking for TWO



mcfarlane
property.com

Ground Floor

Approx. 50.3 sq. metres (541.0 sq. feet)



First Floor

Approx. 29.0 sq. metres (312.2 sq. feet)



Total area: approx. 79.3 sq. metres (853.2 sq. feet)

Agents Note: Whilst every care has been taken to prepare these sales particulars, they are for guidance purposes only. All measurements are approximate are for general guidance purposes only and whilst every care has been taken to ensure their accuracy, they should not be relied upon and potential buyers are advised to recheck the measurements.