



LENNOX

GARDENS

CHELSEA SW1X





A lateral penthouse apartment of approximately 1,747 sq ft (162 sq m) with direct lift access and excellent views of both the communal gardens and the Brompton Oratory. The apartment offers balanced accommodation, with a superb 30 foot reception room, spacious kitchen/breakfast room, two bedroom suites, a study/third bedroom and guest cloakroom/shower room. There is underfloor heating to the hallway and all bathrooms, air cooling throughout, a Creston multi-room system and Lutron lighting throughout.

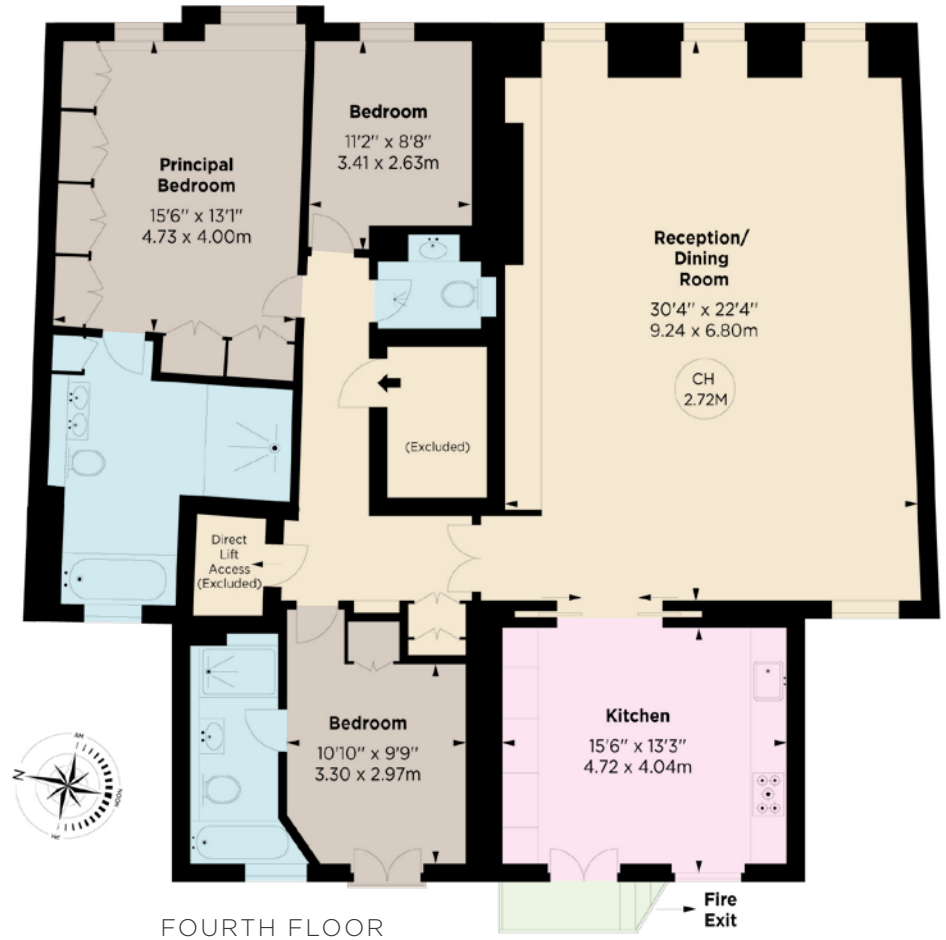
Situated on one of Knightsbridge's most highly regarded garden squares, the apartment is within easy walking distance of London's premier shops and restaurants.

PRINCIPAL BEDROOM WITH ENSUITE BATHROOM ■ DOUBLE BEDROOM WITH ENSUITE BATHROOM ■ THIRD BEDROOM/STUDY ■ GUEST WC ■ RECEPTION ROOM ■ KITCHEN
DIRECT LIFT ACCESS ■ AIR CONDITIONING & UNDERFLOOR HEATING



Key :
CH - Ceiling Height

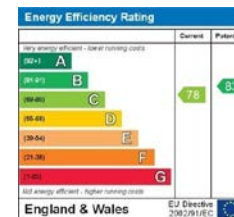
APPROX. GROSS INTERNAL AREA
1,747 Sq Ft - 162.39 Sq M



PRICE: £4,999,950

TENURE: LEASEHOLD WITH 166 YEARS REMAINING

SERVICE CHARGE: £16,000 PER ANNUM



These details have been prepared for general guidance only and should not be relied upon by prospective purchaser/ tenants who before proceeding must check and otherwise satisfy themselves as to the property and the nature, state and availability of any facility or service.



Brochure by TwentyOneFifty Tel: 020 8778 2150

www.nicolasvanpatrick.com