



Ocean Court, Richmond Walk, Plymouth, PL1 4QA

£285,000 Share of Freehold



Ocean Court

Richmond Walk, Plymouth

Unique one-bedroom ground floor apartment with stunning river views in Ocean Court. Open plan living, spacious bedroom, terrace, garage, and share of freehold. Ideal modern sanctuary. Contact for viewing.

Council Tax band: D

Tenure: Share of Freehold

- Ground Floor One of a Kind One Bedroom Apartment
- Uninterrupted River Views from Every Window
- Large Corner Garage
- Full Width Terrace
- Open Plan Living
- Ample Storage Space Throughout
- Highly Sought After Ocean Court Development
- Share of Freehold



Ocean Court

Richmond Walk, Plymouth< PL1 4QA

Welcome to this unique one-bedroom apartment in the highly sought-after Ocean Court development. This ground floor gem offers unparalleled elegance and comfort, making it the perfect sanctuary for modern living.

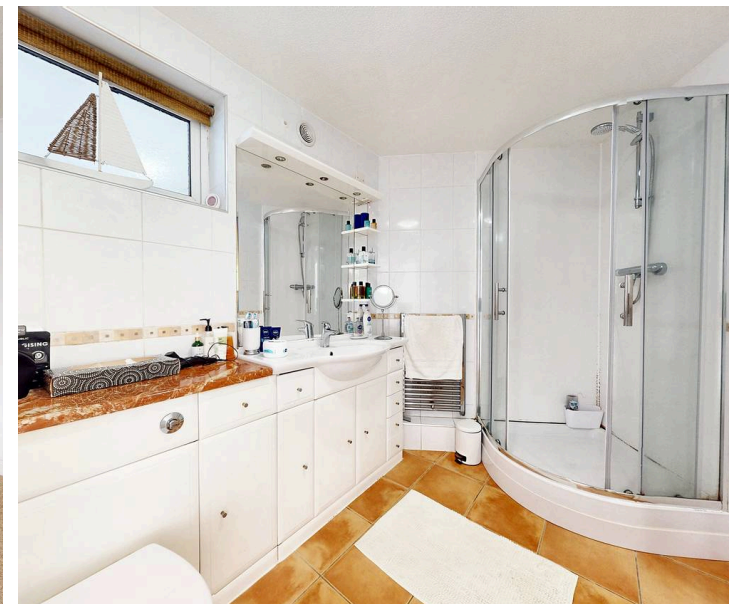
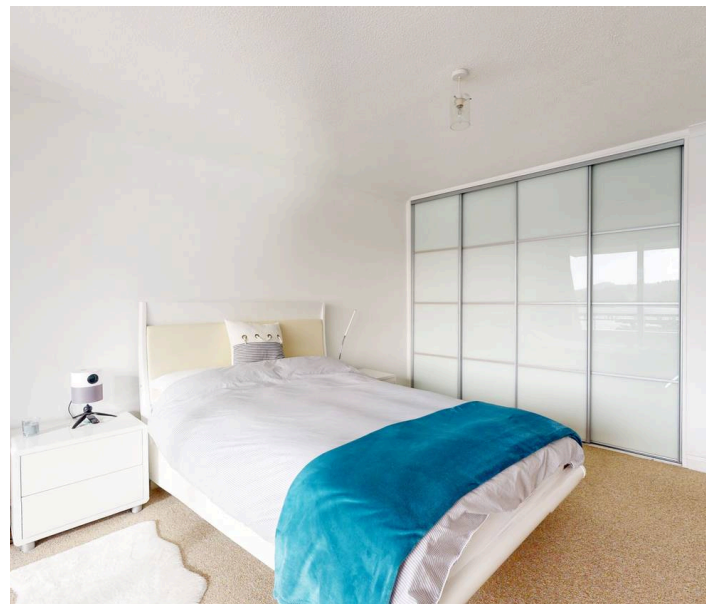
As you step into this one-of-a-kind apartment, you are welcomed by the breath-taking uninterrupted river views that can be admired from every window. Imagine waking up to the soothing sights and sounds of the water every morning - pure bliss!

The open plan living area is not only spacious but also filled with natural light, creating a warm and inviting ambience. The design features a full-width terrace, perfect for enjoying a morning coffee or hosting gatherings with friends and family.

The bedroom is a generously sized retreat, offering access to the terrace and fitted wardrobes. With ample storage space throughout, staying organised has never been easier. The property also boasts a large corner garage, providing convenient parking and additional storage options.

Located in the prestigious Ocean Court development, this apartment offers a share of freehold, providing you with security and peace of mind.

Contact us today to schedule a viewing.



Ocean Court

Richmond Walk, Plymouth, PL1 4QA

Tenure & Services

Tenure: Share of Freehold

Lease Length: 969 years remaining

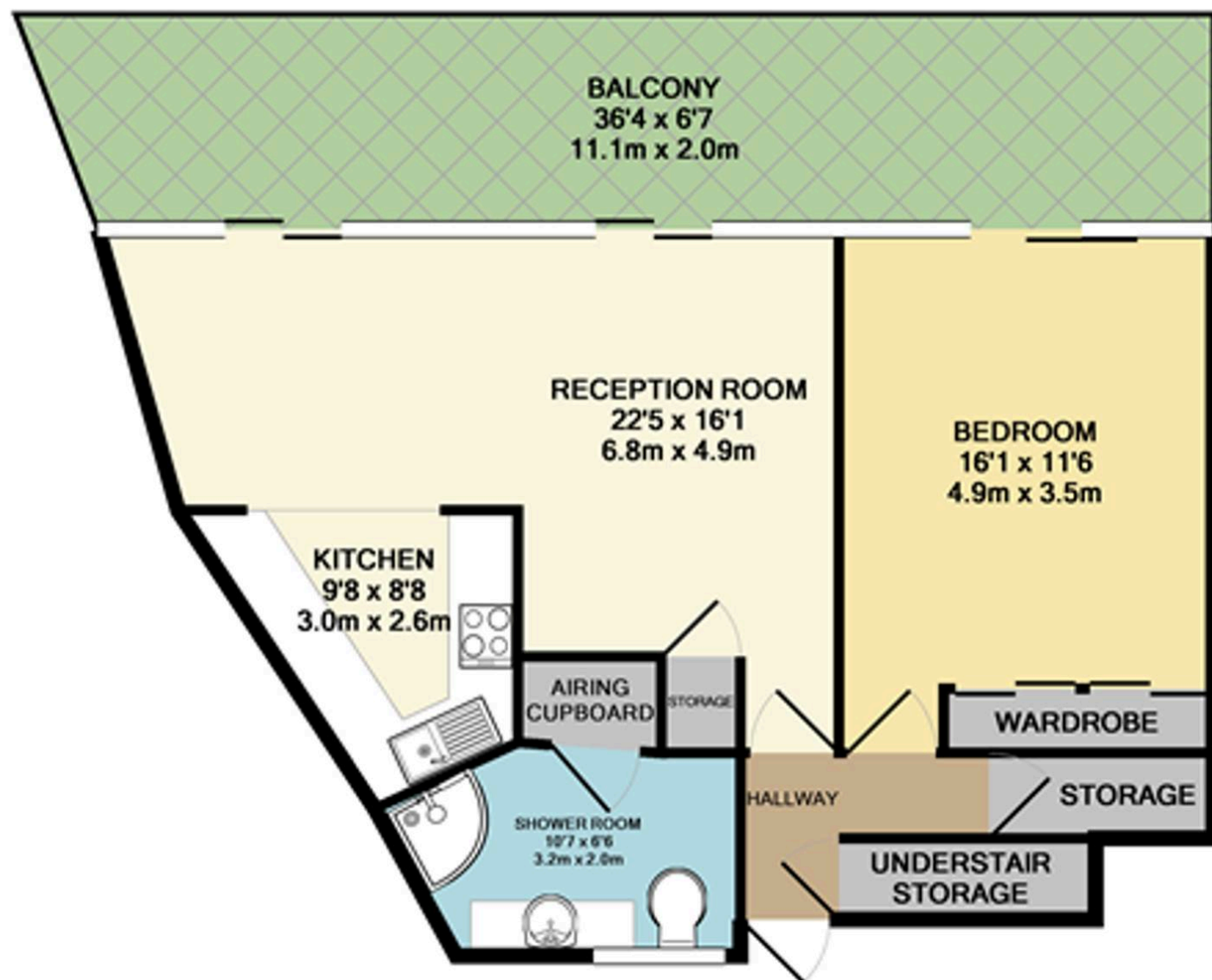
Service charge & Ground rent: £2000.00 per annum

Buildings Insurance: £289.71 per annum

EPC: TBC

Council Tax Band: D





TOTAL APPROX. FLOOR AREA 633 SQ.FT. (58.8 SQ.M.)

Whilst every attempt has been made to ensure the accuracy of the floor plan contained here, measurements of doors, windows, rooms and any other items are approximate and no responsibility is taken for any error, omission, or mis-statement. This plan is for illustrative purposes only and should be used as such by any prospective purchaser. The services, systems and appliances shown have not been tested and no guarantee as to their operability or efficiency can be given

Made with Metropix ©2016



Atwell Martin

Atwell Martin, 65 Southside Street – PL1 2LA

01752 202121

plymouthsales@atwell-martin.co.uk

plymouth.atwellmartin.co.uk/

Atwell Martin Plymouth endeavour to ensure the accuracy of property details produced and displayed. Please note that we have not tested any apparatus, equipment, fixtures, fittings or services and so cannot verify that they are connected, in working order or fit for purpose. It is imperative that the buyer of any property makes such checks, prior to purchase so as to satisfy themselves of the properties suitability for their purchase. .

