



Bartlams.

‘Cherringham’ Bridgnorth Road, Wightwick WV6 7ET

£699,950

'Cherringham' Bridgnorth Road

Wightwick, South Staffordshire

Bartlams Estate Agents of Tettenhall are thrilled to present this stunning bungalow, nestled atop the Staffordshire Hills, offering breathtaking panoramic views of the countryside over South Staffordshire, Wolverhampton and Shropshire. This beautifully renovated home has been finished to an exceptional standard, with meticulous attention to detail throughout. A long, private driveway from the main road leads up to the secluded plot, surrounded by open fields, creating a peaceful and picturesque retreat. Upon entering, a welcoming entrance hall provides access to all areas of this thoughtfully designed home. The spacious living room boasts windows with views over surrounding fields, an original brick fireplace, and a cosy seating nook, offering the perfect sanctuary to relax and take in the rolling landscapes. Adjacent to this, the elegant dining area is positioned to maximise the views, complete with a charming book nook, making it an inviting space for entertaining.

From the dining area, a skylight-lit passageway leads to a gated courtyard and a beautifully finished utility area. The stunning open-plan kitchen is the heart of the home, featuring a large central island, high-end cabinetry, and top-of-the-range appliances. Designed with both function and aesthetics in mind, this space enjoys two sets of large double doors opening onto a garden breakfast area and a summerhouse, both offering spectacular views. A convenient downstairs WC, complete with a garden-facing window, further enhances the practical layout of this home.



B.



334 Bridgnorth Road

Wolverhampton

The property comprises three beautifully styled bedrooms, each designed to frame the stunning scenery through carefully positioned feature windows. The luxurious main bathroom is finished to an exceptional standard, complete with high-quality tiling, a walk-in shower, a freestanding bath, a vanity unit, and a WC. Externally, the landscaped gardens have been thoughtfully designed, with multiple seating areas providing different perspectives of the surrounding countryside. A beautifully decorated summerhouse, fitted with electricity, offers the perfect spot for alfresco dining or relaxation. Encompassed by rolling hills, this breathtaking bungalow is a true escape into tranquility, offering a lifestyle of comfort, elegance, and natural beauty. A must-see property for those seeking a high-end rural retreat.

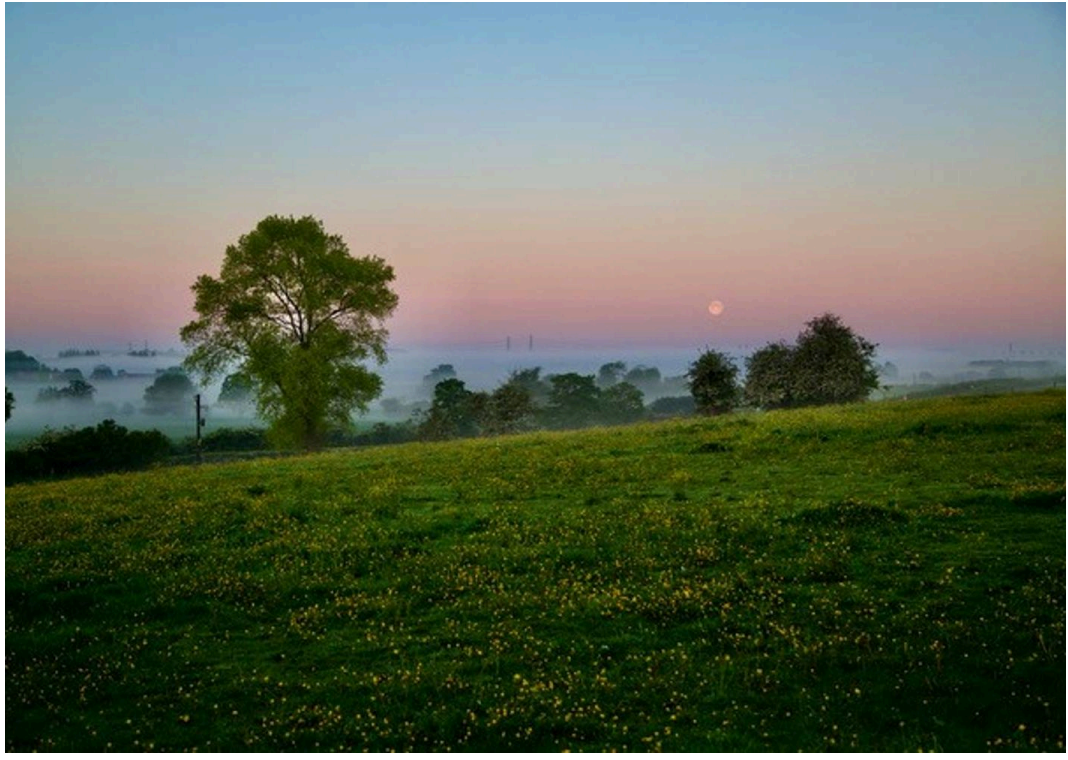
- PICTURESQUE SCENIC VIEWS ACROSS SOUTH STAFFORDSHIRE AND SHROPSHIRE
- SUPERB LIVING ROOM WITH 'NOOK' SITTING/READING AREA WITH VIEWS OVER SHROPSHIRE
- PRIVATE GATED ENTRANCE WITH PARKING FOR MULTIPLE CARS
- BEAUTIFULLY PRESENTED INTERNALLY
- SET ON JUST UNDER 1/4 ACRE
- THREE BEDROOMS WITH PANORAMIC VIEWS
- OUTSTANDING FITTED BREAKFAST KITCHEN WITH ADJACENT UTILITY ROOM
- MODERN FITTED BATHROOM AND SEPRATE W.C.
- DINING ROOM WITH SEPARATE SITTING AREA



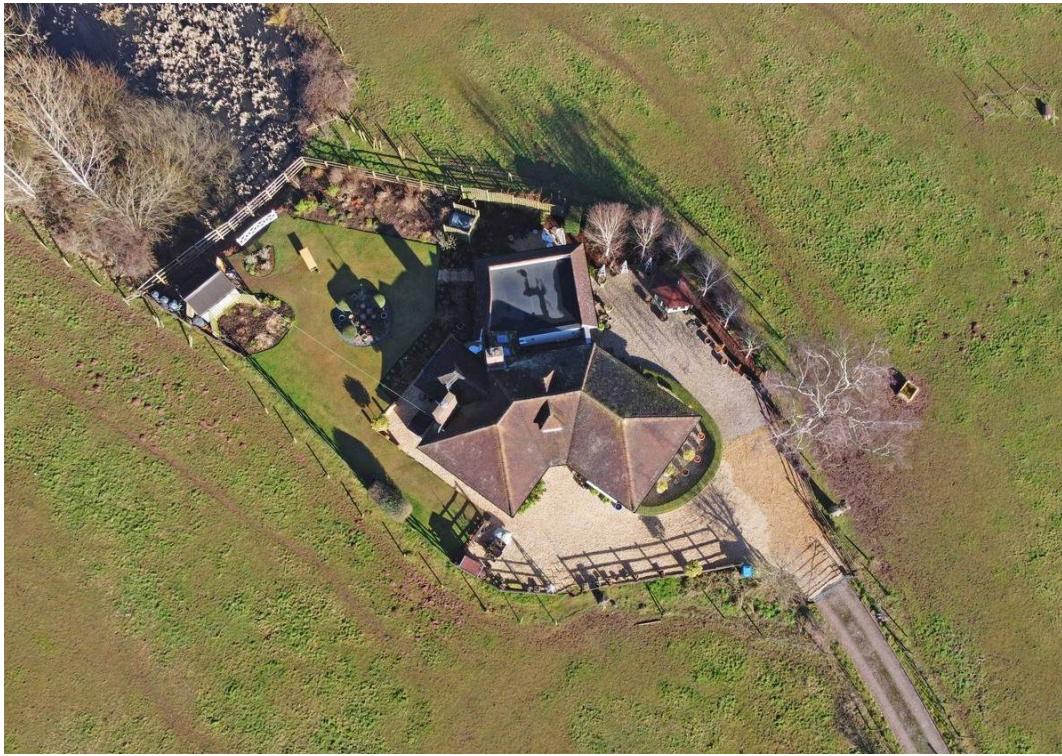
B.



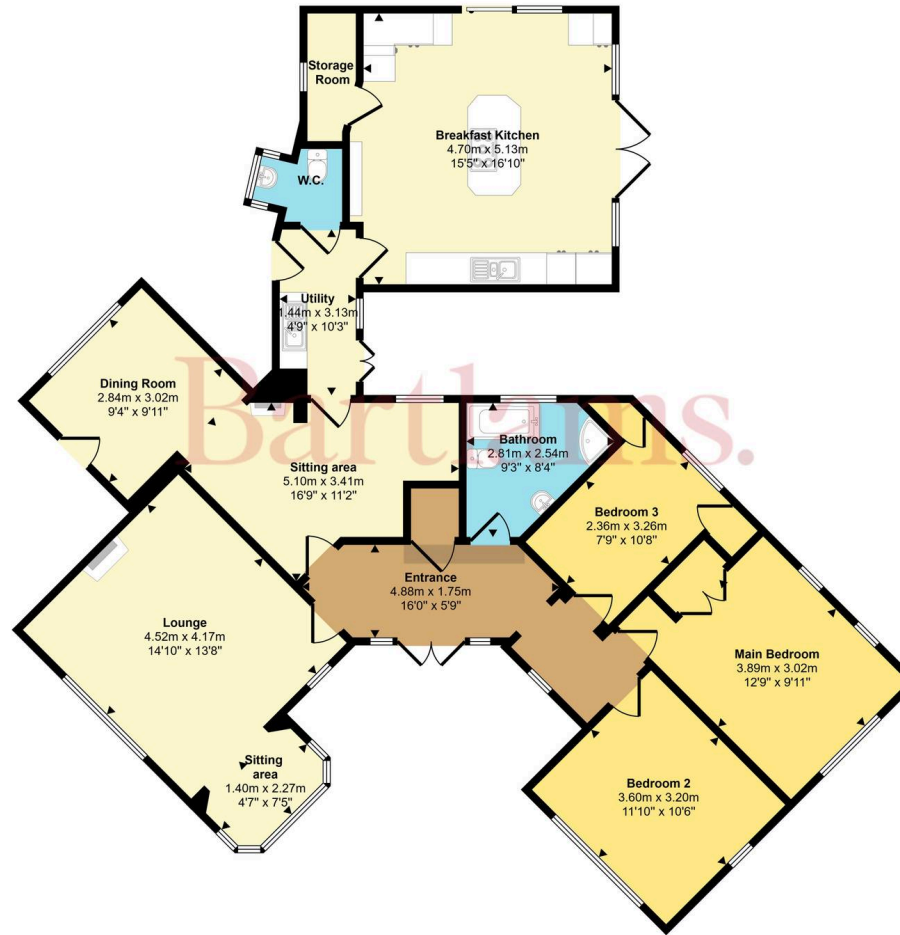








Approx Gross Internal Area
131 sq m / 1415 sq ft



Floorplan

Bartlams Tettenhall

Bartlams, 24 High Street - WV6 8QT

01902 759888

tettenhall@bartlams.co.uk

www.bartlams.co.uk/

NOTICE: These particulars, although believed to be correct, do not constitute any part of an offer or contract. All statements contained in these particulars as to this property are made without responsibility and are not to be relied upon as statements or representations of warranty whatsoever in relation to property. Any intending purchaser must satisfy themselves by inspection or otherwise as to the correctness each of the statements contained in these particulars. All measurements are approximate and for illustrative purposes only. Photographs are produced for general information and it must not be inferred that any item shown is included in the sale. DISCLOSURE: As a professional Estate Agency our clients employ us to look after their best interests. This includes providing them with full details of offers made to purchase their property. To ensure our obligations to our clients are met we need to check the status of all potential purchasers. If you make an offer on this property we will ask a member of The Finance Family to contact you to verify your status. They are a leading firm of Independent Financial Advisers and Mortgage Brokers. Should they transact any business resulting from our introduction then we may receive a commission.

