



3 Hardy Drive, Hythe
£372,000


ANTHONY JAMES
PROPERTIES



3 Hardy Drive

Hythe, Southampton

Nestled in the sought-after area of Hythe, this modern three bedroom semi-detached house presents a wonderful opportunity for those seeking a comfortable and inviting home. Boasting spacious accommodation throughout, the property features a large lounge with a cosy wood-burning stove, providing the perfect setting for relaxation and entertaining. The three bedrooms and two bathrooms, along with a ground floor W/C, ensure ample space for a growing family or visiting guests. The refitted ensuite in the master bedroom adds a touch of luxury, while the ownership of solar panels outright offers both eco-friendly living and cost-saving benefits. The property also benefits from driveway parking and a garage, providing convenient and secure storage for vehicles or additional belongings.

Council Tax band: C

Tenure: Freehold



1 Southward House
Dibden Purlicu SO45 4PT

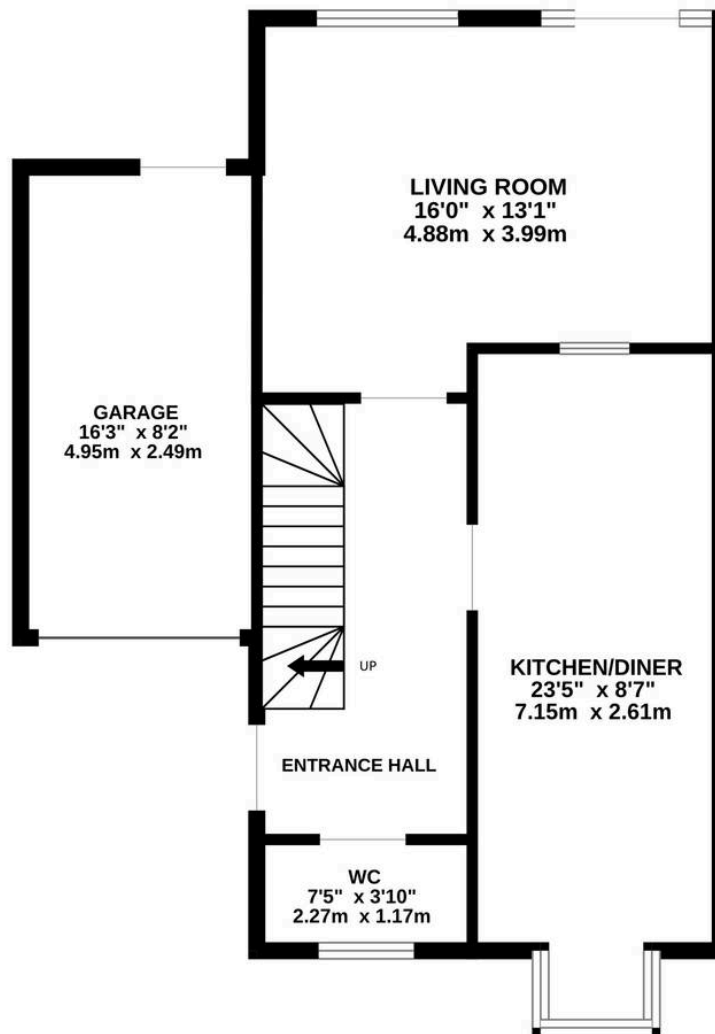


T: 02380 844405

info@anthonyjamesproperties.co.uk



GROUND FLOOR
657 sq.ft. (61.1 sq.m.) approx.



1ST FLOOR
514 sq.ft. (47.7 sq.m.) approx.



TOTAL FLOOR AREA : 1171 sq.ft. (108.8 sq.m.) approx.

Whilst every attempt has been made to ensure the accuracy of the floorplan contained here, measurements of doors, windows, rooms and any other items are approximate and no responsibility is taken for any error, omission or mis-statement. This plan is for illustrative purposes only and should be used as such by any prospective purchaser. The services, systems and appliances shown have not been tested and no guarantee as to their operability or efficiency can be given.
Made with Metropix ©2025