



11 Chester Court, Davigdor Road

Hove BN3 1RB

Asking Price Of £240,000

- DOUBLE BEDROOM
- MODERN KITCHEN
- LIVING/DINING ROOM
- WHITE BATHROOM SUITE
- SOUTH/WEST FACING BEDROOM AND LOUNGE
- NO ONWARD CHAIN
- DESIRABLE LOCATION
- UPVC DOUBLE GLAZED WINDOWS

Whitlock and Heaps are pleased to bring to market this one bedroom top floor apartment with a delightful south westerly aspect towards St Ann's Wells Gardens. The property benefits from an open plan kitchen and living/dining room and a white bathroom suite. Being sold with no onward chain. Situated in this convenient location within a few minutes walk of Seven Dials and Brighton mainline station offering direct links to London. Brighton City centre is also easily accessible.

ENTRANCE HALL Airing cupboard with cylinders.

KITCHEN Incorporating stainless sink unit with drainer and mixer tap, adjacent laminate worksurface with cupboards and drawers under, matching eye level wall cupboards, inset ceramic hob with stainless steel extractor over, oven, integrated fridge/freezer and washing machine, tiled splashback, UPVC double glazed window, opening to:

LIVING/DINING ROOM South westerly aspect with UPVC double glazed window, heater.

BEDROOM South westerly aspect with UPVC double glazed window, heater.

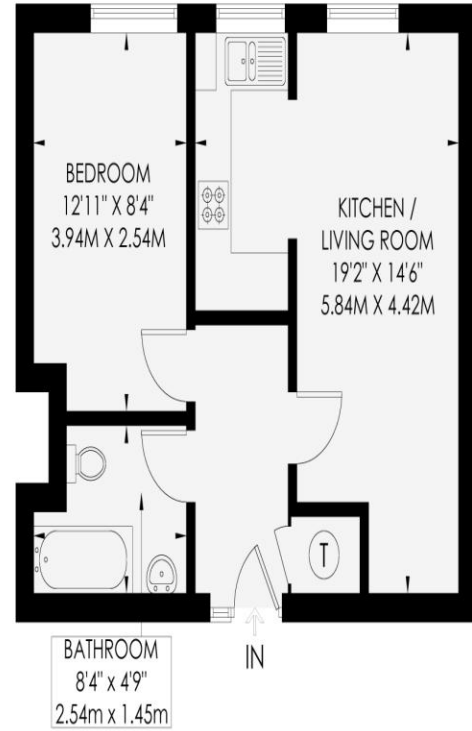
BATHROOM White suite comprising panelled bath with mixer tap and shower attachment, wash hand basin with cupboard under, low level w.c, tiled walls and floor, heated ladder style towel rail.

OUTGOINGS Approx. 116 years remaining
Service charge: £2,582 annually which includes ground rent and reserve fund.

CHESTER COURT

HOVE

APPROXIMATE GROSS INTERNAL AREA
40.8 sq m / 439 sq ft

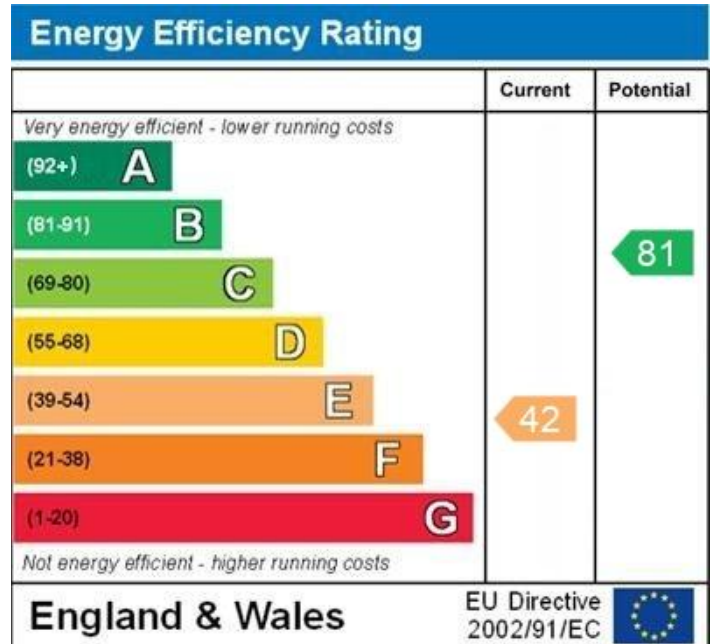


Second Floor
40.8 sq m / 439 sq ft

Whitlock & Heaps Floor plan is for illustration and identification purposes only and is not to scale. Plot, gardens, balconies and terraces are illustrative only and excluded from all area calculations. All site plans are for illustration purposes only and are not to scale. This floor plan has been produced in accordance with Royal Institution of Chartered Surveyors' International Property Standards 2 (IPMS2). Copyright Bespoke Property Marketing 2025

- Measuring Points
- Storage Cupboard
- Fitted Wardrobes
- Garden Shortened for Display
- Skylight
- Ceiling Height
- Hot Water Tank
- Integrated Fridge / Freezer
- Head Height Below 1.5m
- Boiler

BESPOKE PROPERTY MARKETING



Portslade Branch
48 Boundary Road, Portslade BN3 4EF
portslade@whitlockandheaps.co.uk
01273 422706

Hove Branch
65 Sackville Road, Hove BN3 3WE
hove@whitlockandheaps.co.uk
01273 778577



Disclaimer: Whitlock & Heaps have produced these particulars in good faith and they are set out as a general guide. Accuracy is not guaranteed, nor do they form part of any contract. If there is any particular aspect of these details which you require any confirmation, please do contact us, especially if contemplating a long journey. All measurements are approximate. Fixtures and fittings, other than those mentioned above, to be agreed with the seller. Any services, systems or appliances at the property have not been tested.