



Stonefield Close, Eastleaze - SN5 7EH

Swindon

Guide Price **£85,000**

m^cfarlane
property.com

Stonefield Close

Eastleaze - West Swindon

- Studio Apartment in West Swindon
- Extended Lease (119 Years Remaining)
- First Floor Apartment
- Vacant Possession (No Chain)
- Ideal First Purchase
- Opportunity as Investment (possible yield of 9% +)



IDEAL First Purchase with Great Rental Possibilities

Call to View

01793 751 044



Stonefield Close

Eastleaze, West Swindon

Council Tax band: A

Tenure: Leasehold

EPC Energy Efficiency Rating: C

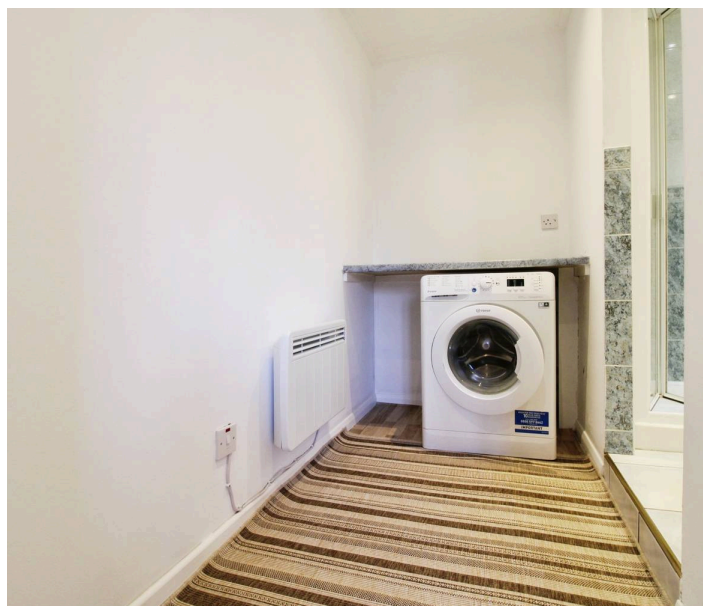
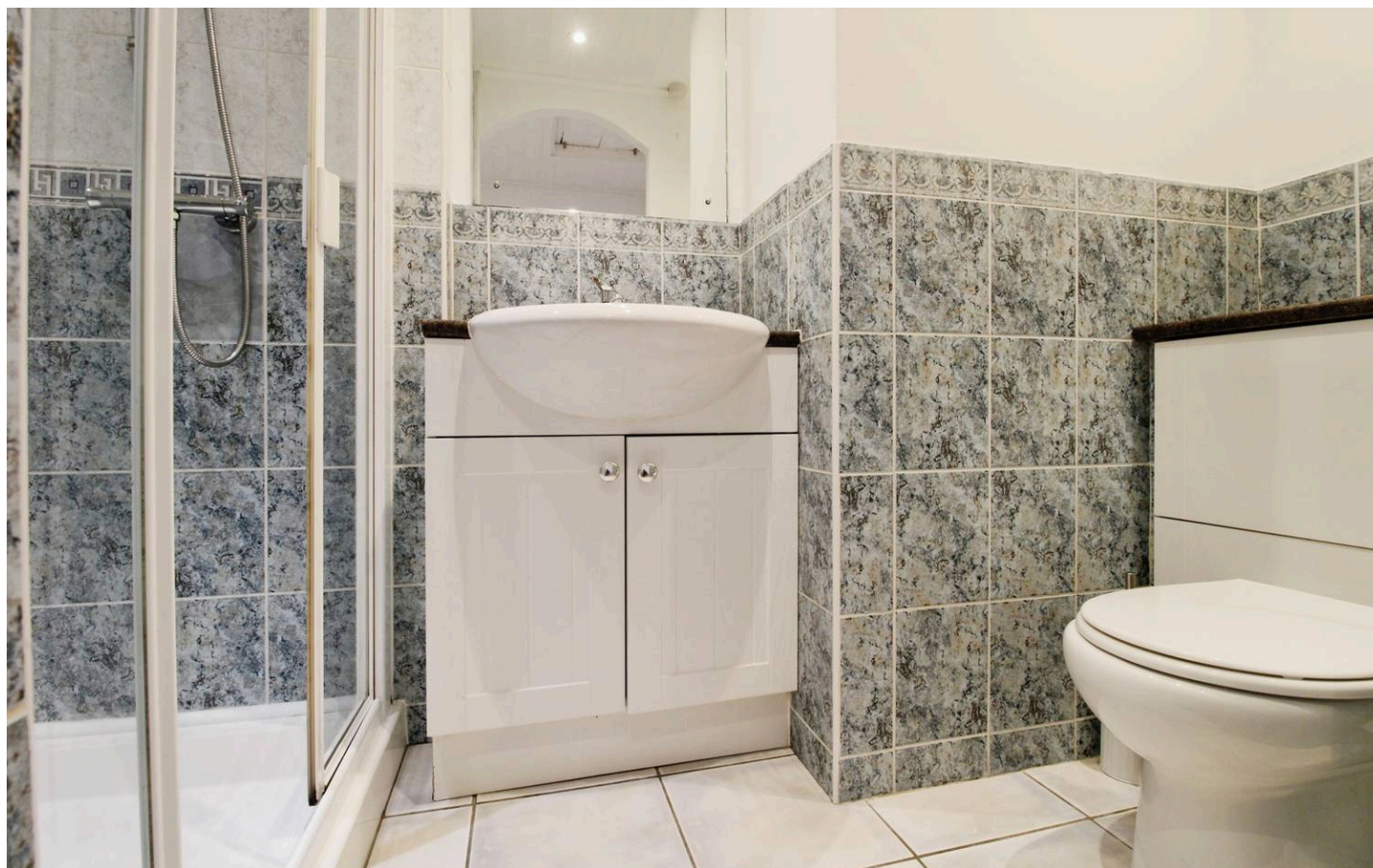
EPC Environmental Impact Rating: E

Leasehold (119 years Remaining)

Service Charge £200 Per Annum

Ground Rent £90 Per Annum

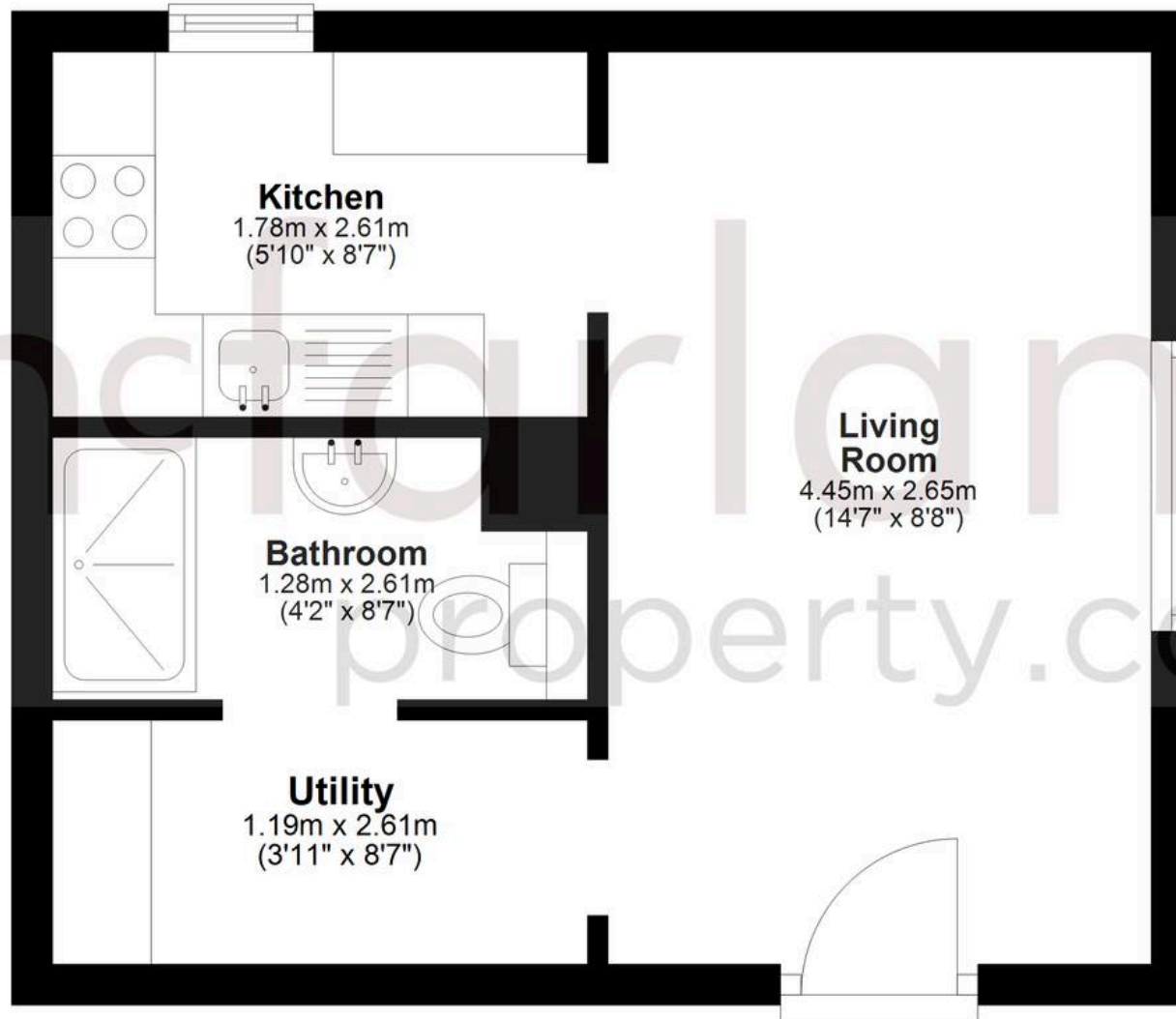
charges correct at time of print



mcfarlane
property.com

Ground Floor

Approx. 23.9 sq. metres (256.7 sq. feet)



Agents Note: Whilst every care has been taken to prepare these sales particulars, they are for guidance purposes only. All measurements are approximate are for general guidance purposes only and whilst every care has been taken to ensure their accuracy, they should not be relied upon and potential buyers are advised to recheck the measurements.

Total area: approx. 23.9 sq. metres (256.7 sq. feet)