



13 KENWOOD CLOSE, MAIDENHEAD, BERKSHIRE, SL6 5AL

**13 KENWOOD CLOSE,
MAIDENHEAD, BERKSHIRE, SL6
5AL**

**GUIDE PRICE: £469,950
FREEHOLD**

An opportunity to acquire a two bedroom semi-detached bungalow occupying a cul-de-sac position which is conveniently located within catchment for Newlands School for Girls, local shops and acres of National Trust Land at Maidenhead Thickett. The property features driveway parking and a garage and provides excellent potential for extension/refurbishment and is offered for sale with No Chain.

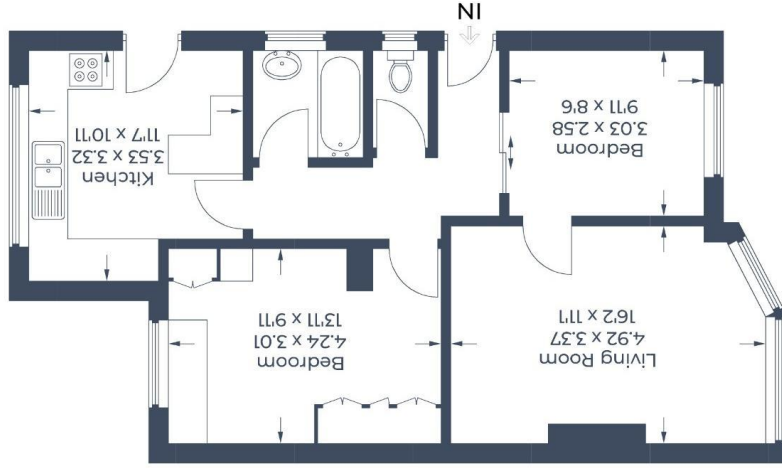
- Entrance Hall • Living Room • Kitchen •
- Two bedrooms • Bathroom • Seperate WC
- Enclosed Rear Garden • Driveway Parking
- Garage & Car Port • No Chain



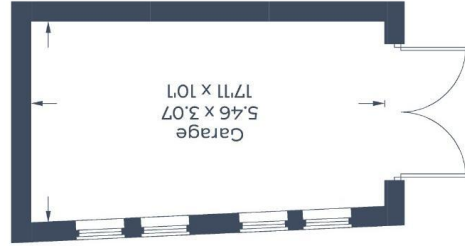


For clarification we wish to inform prospective purchasers that we have prepared these sales particulars as a general guide. We have not carried out a detailed survey nor tested the services, appliances and specific fittings. Room sizes should not be relied upon for carpets, furnishings and appliances. Whilst these particulars are believed to be correct their accuracy is not guaranteed and are given without responsibility. They do not form part of any contract.

Illustration for identification purposes only, measurements are approximate, not to scale. © CJ Property Marketing Produced for Braxton



(Not Shown in Actual Location / Orientation)



Approximate Gross Internal Area
 Garage = 16.2 sq m / 174 sq ft
 Total = 76.6 sq m / 824 sq ft

