



Hartley Road, Plymouth, PL3 5LW

£300,000 FREEHOLD





## Hartley Road

Plymouth, PL3 4LW

Stunning 3-bed renovated house on prestigious Hartley Road. Spacious living area, high-end kitchen, master bed with en-suite & dressing room. Off-road parking, no onward chain. Schedule a viewing today!

Council Tax band: A

Tenure: Freehold

- Three Double Bedroom Mid terrace Home
- Off Road Parking
- Prestigious Hartley Road
- Renovated to a Modern Standard
- Large Living Dining Room
- Separate Kitchen
- Generous Master Bedroom with Dressing Room and En-suite
- No Onward Chain





# Hartley Road

Plymouth, PL3 5LW

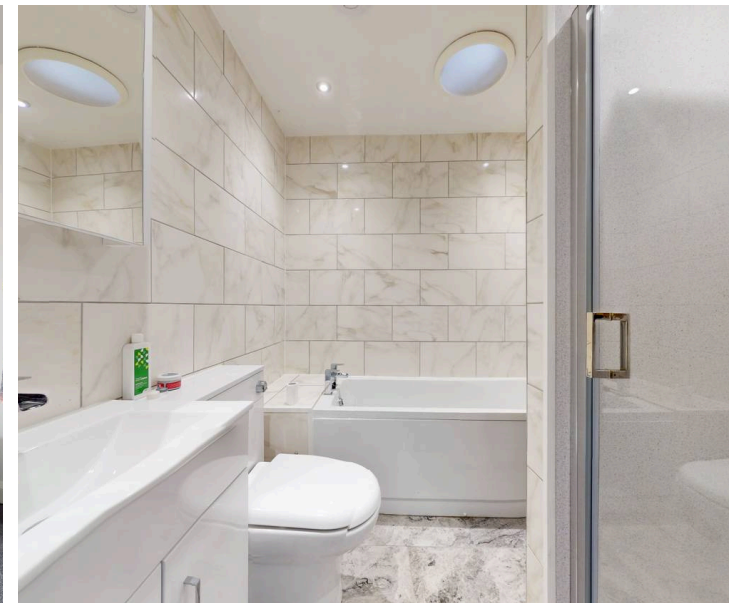
Step into this stunning 3-bedroom mid-terraced house located on the prestigious Hartley Road. This remarkable home, renovated to a modern standard, offers the perfect blend of style and comfort.

As you walk through the front door, you're greeted by a spacious living dining room, ideal for entertaining guests or relaxing with family. The separate kitchen is, equipped with high-end appliances and plenty of counter space for meal prep.

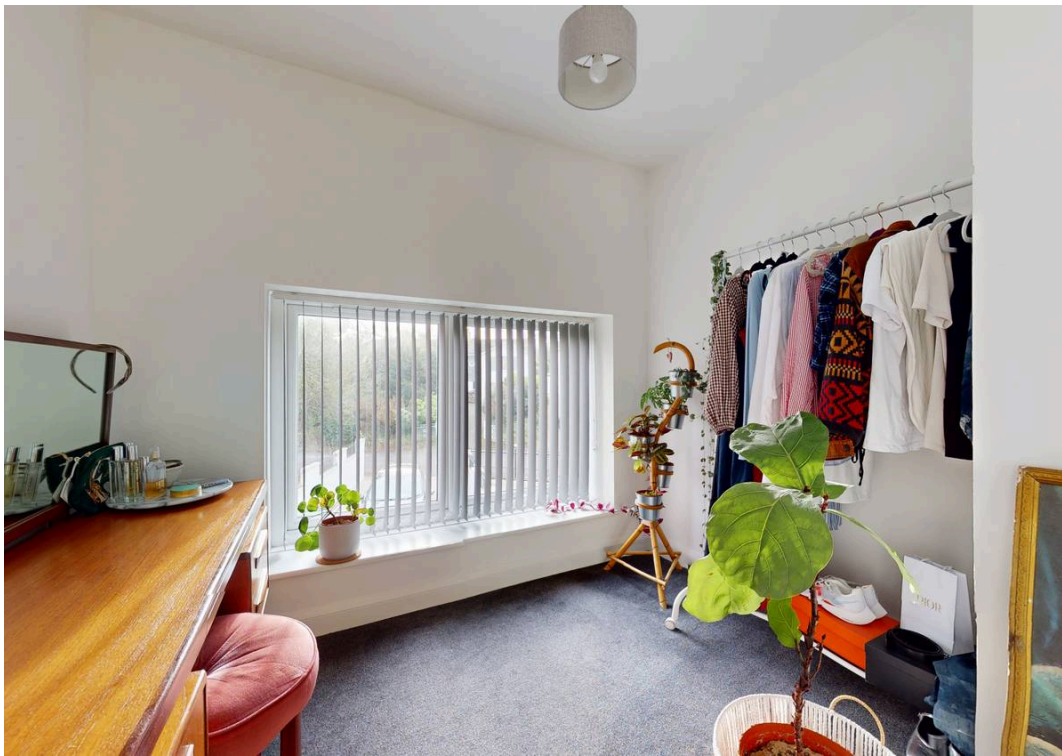
Upstairs, the generous master bedroom awaits, complete with a dressing room and en-suite bathroom, providing a private sanctuary for relaxation. The two additional double bedrooms offer ample space for guests or a home office, ensuring everyone has their own retreat.

With off-road parking, you'll never have to worry about finding a space after a long day. And the best part? This property comes with no onward chain, making your move-in process smooth and stress-free.

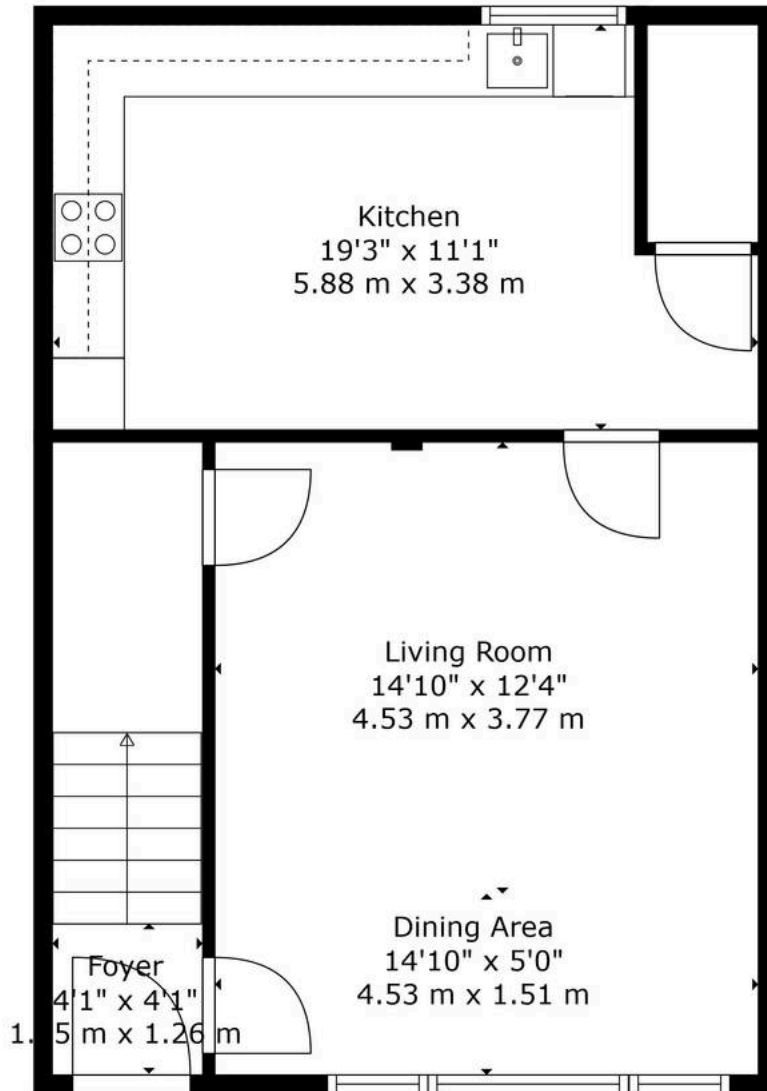
Contact us today to schedule a viewing.



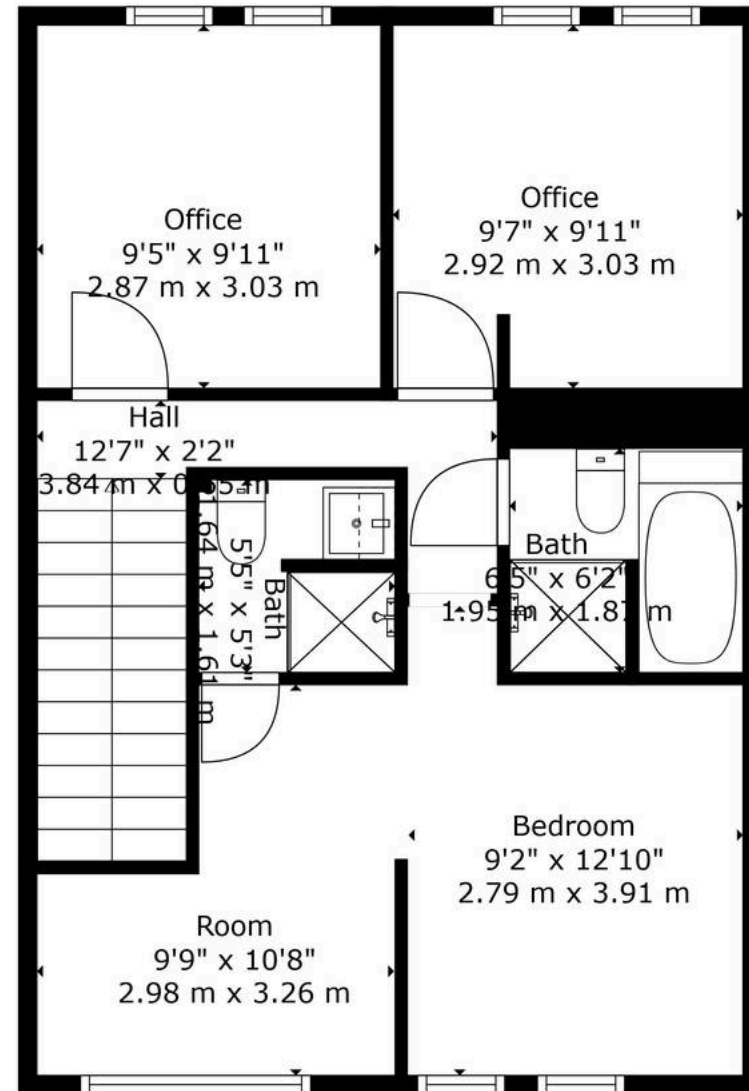








Floor 1



Floor 2



**TOTAL: 1046 sq. ft, 97 m2**  
 FLOOR 1: 556 sq. ft, 52 m2, FLOOR 2: 490 sq. ft, 45 m2  
 EXCLUDED AREAS: LOW CEILING: 67 sq. ft, 6 m2

Floor Plan Created By Cubicasa App. Measurements Deemed Highly Reliable But Not Guaranteed.







## Atwell Martin

Atwell Martin, 65 Southside Street - PL1 2LA

01752 202121

[plymouthsales@atwell-martin.co.uk](mailto:plymouthsales@atwell-martin.co.uk)

[plymouth.atwellmartin.co.uk/](http://plymouth.atwellmartin.co.uk/)

Atwell Martin Plymouth endeavour to ensure the accuracy of property details produced and displayed. Please note that we have not tested any apparatus, equipment, fixtures, fittings or services and so cannot verify that they are connected, in working order or fit for purpose. It is imperative that the buyer of any property makes such checks, prior to purchase so as to satisfy themselves of the properties suitability for their purchase. .



