



11 Somersby Road, Mapperley – NG3 5QY

Guide Price £365,000 – £375,000



11 Somersby Road

Mapperley, Nottingham

Well presented three bedroom detached home in sought-after area. Spacious living, modern kitchen, conservatory. Well-maintained garden, integral garage, ideal for families. Viewing recommended!

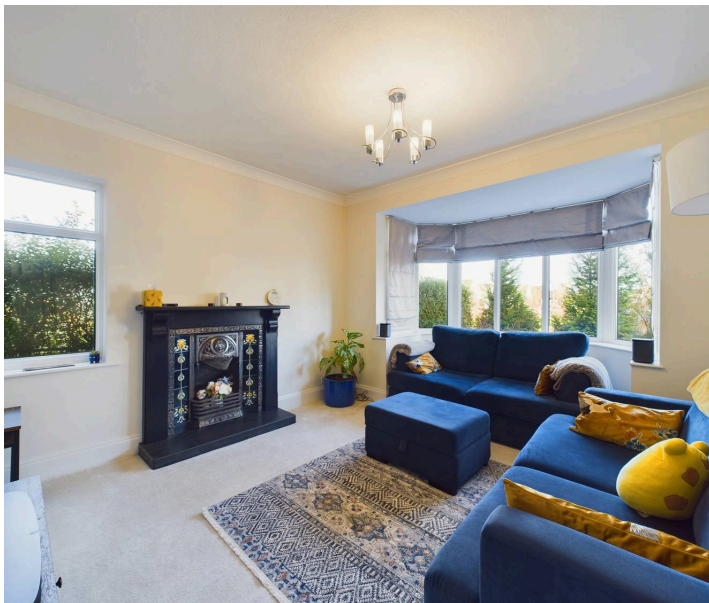
Council Tax band: D

Tenure: Freehold

EPC Energy Efficiency Rating: D

EPC Environmental Impact Rating: E

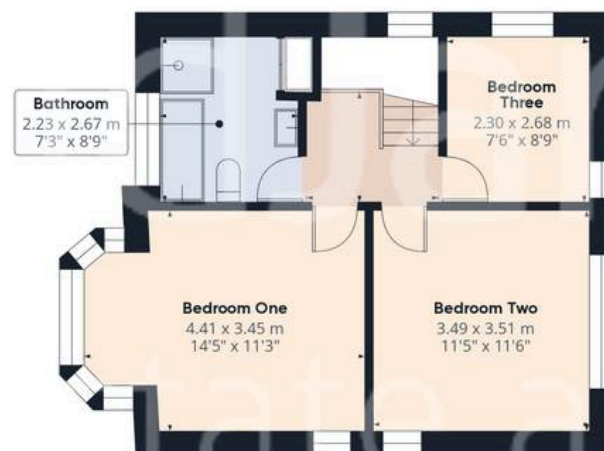
- Well-presented detached family home
- Spacious lounge with a bay window and feature fireplace
- Welcoming entrance hall with cloakroom/WC
- Modern open plan dining room and kitchen with high gloss units and integrated appliances
- Stunning conservatory with French doors to the rear garden
- Three bedrooms (including two generous double rooms)
- Beautiful contemporary bathroom with a four-piece suite
- Large private rear garden with decking, lawn and mature planting
- Block-paved driveway and garage
- Close to excellent local amenities, schools and public transport links







Floor 0



Floor 1

Approximate total area⁽¹⁾

120.03 m²

1292 ft²

(1) Excluding balconies and terraces

While every attempt has been made to ensure accuracy, all measurements are approximate, not to scale. This floor plan is for illustrative purposes only.

Calculations are based on RICS IPMS 3C standard.

GIRAFFE360



David James Estate Agents

David James Estate Agents, 45B Plains Road – NG3 5JU

0115 962 4213 • mapperley@david-james.com • www.david-james.com

These particulars are produced in good faith and are set out as a general guide only. Measurements are approximate and floor plans are for illustrative purposes only. Services have not been tested. We have established professional relationships with third-party suppliers for the provision of services to Clients, details of which can be found on the property listing page on our website.