

270 High Road

North Weald, Essex

Guide Price £1,100,000

Council Tax band: G

Tenure: Freehold

- Five bedroom family home
- Open-Plan living
- Private rear garden overlooking Blakes Golf Club
- Ground floor shower room
- Garden Room
- Beautiful interiors throughout
- Short drive to Epping and the M11



Kitchen

21' 9" x 16' 8" (6.64m x 5.08m)

Dining Room

14' 7" x 14' 0" (4.45m x 4.27m)

Living Room

14' 4" x 17' 5" (4.37m x 5.31m)

Games Room

18' 10" x 12' 9" (5.75m x 3.89m)

Conservatory

12' 3" x 9' 9" (3.73m x 2.98m)

Shower Room**Primary Bedroom**

15' 6" x 13' 0" (4.73m x 3.96m)

En-suite Shower Room**Bedroom**

6' 7" x 12' 8" (2.00m x 3.85m)

Bedroom

9' 4" x 12' 8" (2.85m x 3.85m)

Bedroom**Bathroom****Garden Games Room**

11' 11" x 23' 6" (3.63m x 7.16m)





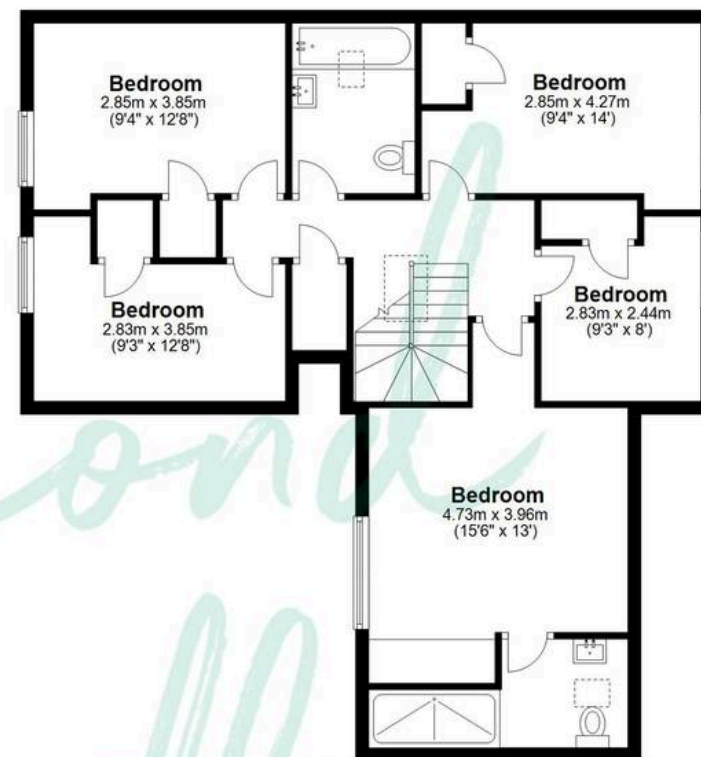
Ground Floor

Approx. 155.9 sq. metres (1678.0 sq. feet)



First Floor

Approx. 79.0 sq. metres (850.7 sq. feet)



Outbuilding

Approx. 26.0 sq. metres (280.0 sq. feet)



Total area: approx. 260.9 sq. metres (2808.6 sq. feet)

THE FLOORPLAN IS FOR ILLUSTRATIVE PURPOSES ONLY AND IS NOT TO SCALE. Measurements and features are approximate and may differ from the actual property. Verify all details independently; no liability is accepted for errors or omissions.