



Blatchcombe Road, Paignton

Paignton

Guide Price £425,000

ABSOLUTE



Blatchcombe Road

Paignton,

Spacious 4-bed detached bungalow with character features. Lounge with fireplace, kitchen/dining room, 2 ground floor bedrooms, sea views from first-floor bedrooms, en-suite, family shower room, basement storage/workshop. Parking. Council Tax band: D

Tenure: Freehold

EPC Energy Efficiency Rating: D

EPC Environmental Impact Rating: D

- 1930's Detached bay fronted bungalow
- 4 Double bedrooms
- Lovely lounge with a bay window and multi fuel wood burner
- Spacious kitchen/dining room with free standing kitchen units with wooden work tops over
- Downstairs WC
- Stylish en-suite to main bedroom along with walk-in wardrobes to both of the upstairs bedrooms
- Spacious modern shower room
- Large basement rooms
- Attractive good sized mature rear garden with paved and wooden decked areas and a large lawn and vegetable garden
- Rear store room/workshop and driveway parking



Blatchcombe Road

Paignton,

Located in a popular residential area the bungalow is approximately 1 mile from Paignton town centre, with its array of shops, restaurants and cafes.

Paignton has a lovely sea front with some gorgeous beaches and access to the fabulous coastal walk linking the nearby towns of Brixham and Torquay.

Absolute Sales & Lettings

Absolute Sales & Lettings, 27 Hyde Road - TQ4 5BP

01803 890110

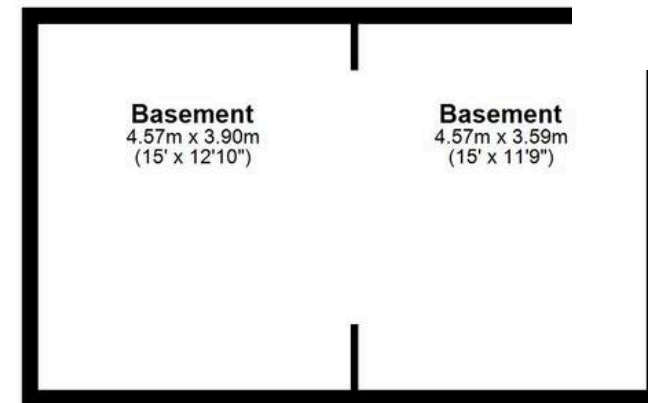
paignton@movewithabsolute.co.uk

<http://www.movewithabsolute.co.uk>



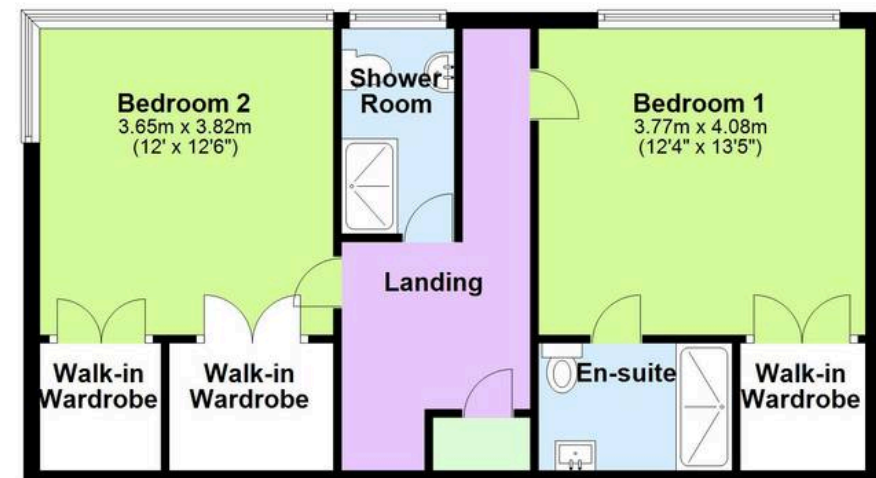
Basement

Approx. 34.7 sq. metres (373.5 sq. feet)



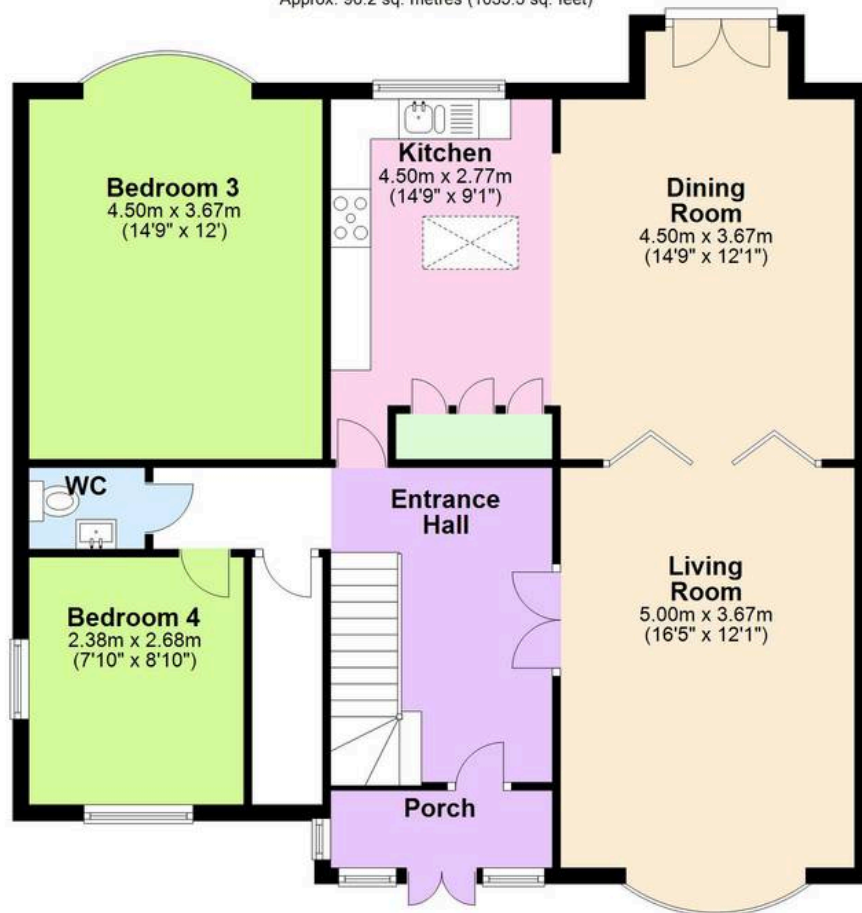
First Floor

Approx. 56.6 sq. metres (609.0 sq. feet)



Ground Floor

Approx. 96.2 sq. metres (1035.3 sq. feet)



Total area: approx. 187.5 sq. metres (2017.8 sq. feet)

Approx
Plan produced using PlanUp.

