







7 Mead Close

Knutsford, WA16 0DU

Exquisite 4-bed detached bungalow in quiet cul-de-sac offers contemporary living. Open-plan design, attractive kitchen, underfloor heating. Charming exteriors, westerly garden, resin driveway. Ideal downsizing retreat with modern comforts. Close to town amenities.

Council Tax band: D

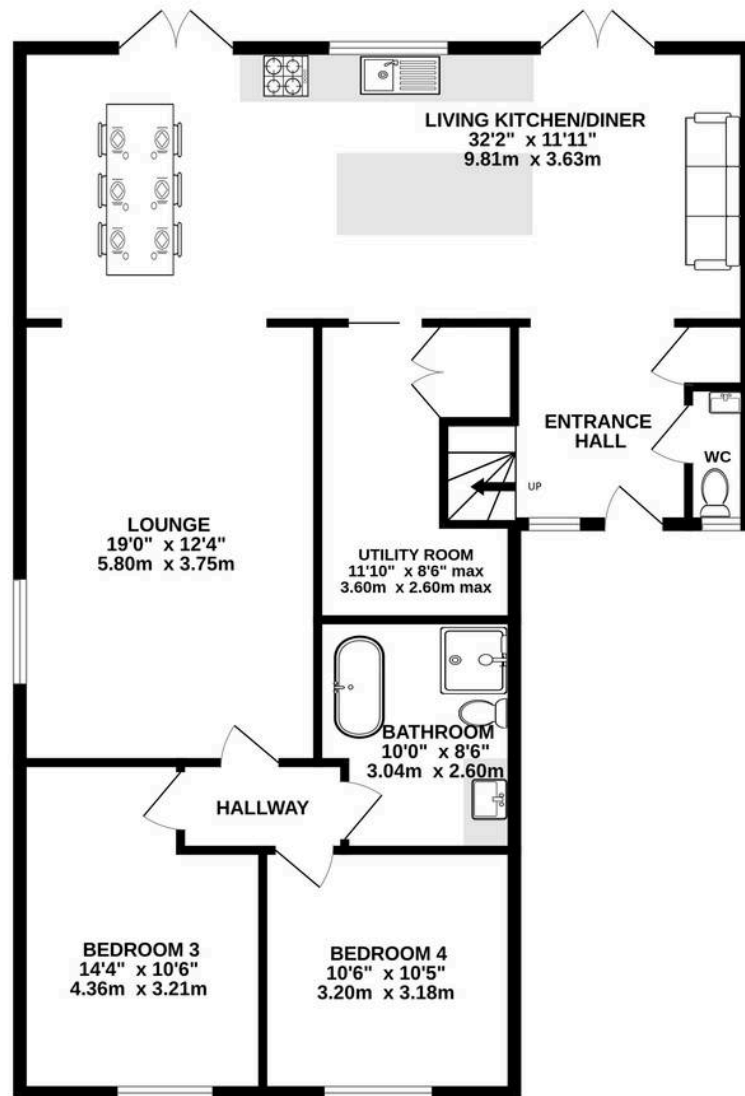
Tenure: Freehold

EPC Energy Efficiency Rating: C

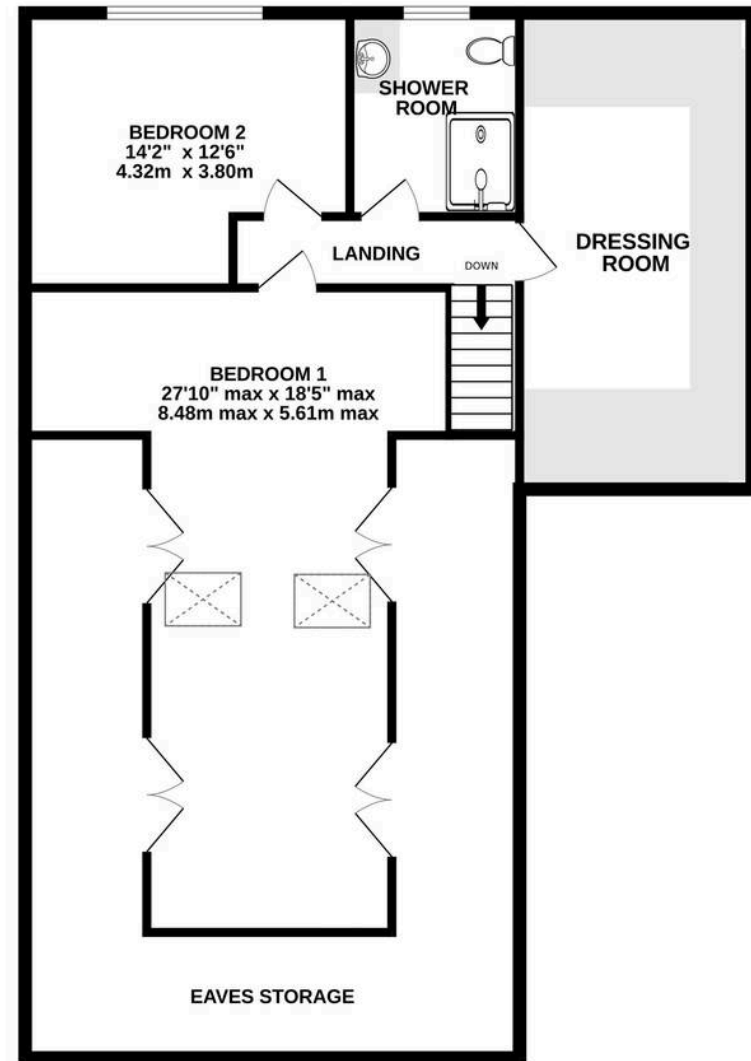
- Fabulous, flexible accommodation across two floors
- A thorough program of refurbishment and extension
- Stunning open plan living kitchen/diner with a stand-out kitchen, concealed utility room and additional lounge
- Four bedrooms and two bathrooms, plus an additional WC
- Driveway parking and a lovely rear garden with a sunny aspect
- Quiet cul-de-sac position just an easy stroll into the town



GROUND FLOOR
1227 sq.ft. (114.0 sq.m.) approx.



1ST FLOOR
1227 sq.ft. (114.0 sq.m.) approx.



TOTAL FLOOR AREA : 2454 sq.ft. (228.0 sq.m.) approx.

Whilst every attempt has been made to ensure the accuracy of the floorplan contained here, measurements of doors, windows, rooms and any other items are approximate and no responsibility is taken for any error, omission or mis-statement. This plan is for illustrative purposes only and should be used as such by any prospective purchaser. The services, systems and appliances shown have not been tested and no guarantee as to their operability or efficiency can be given.

Made with Metropix ©2025



Stuart Rushton & Company

Stuart Rushton & Co, 35 King Street – WA16 6DW

01565 757000

enquiries@srushton.co.uk

www.srushton.co.uk



We are not authorised to make or give any representations or warranties in relation to the property either here or elsewhere. We assume no responsibility for any statement that may be made in these particulars, and they do not form part of any offer or contract and must not be relied upon as statements or representation of fact. Any areas, measurements or distances are approximate. The text, photographs and plans are for guidance only. Importantly, it should not be assumed that the property has all necessary planning, building regulations or other consents and we have not tested any services, equipment or facilities. Purchasers must satisfy themselves by inspection or otherwise.