



18 Thomson Grove, Uphall

Offers Over £175,000



18 Thomson Grove

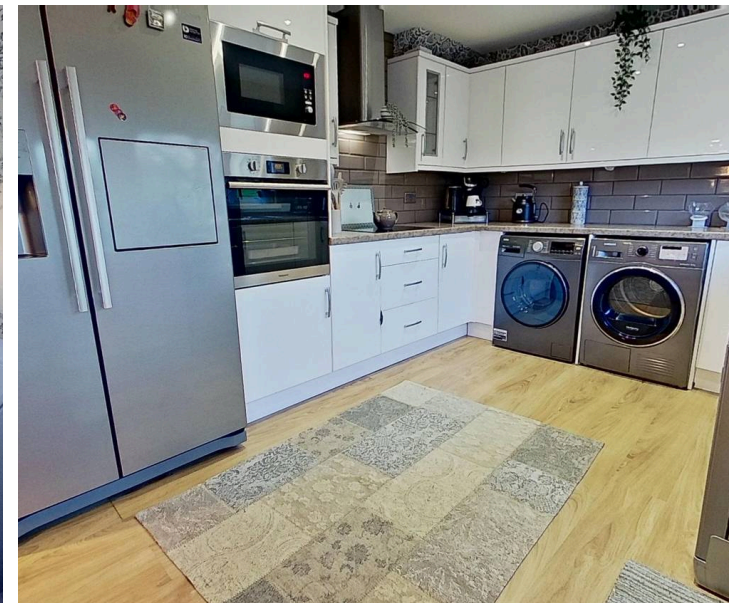
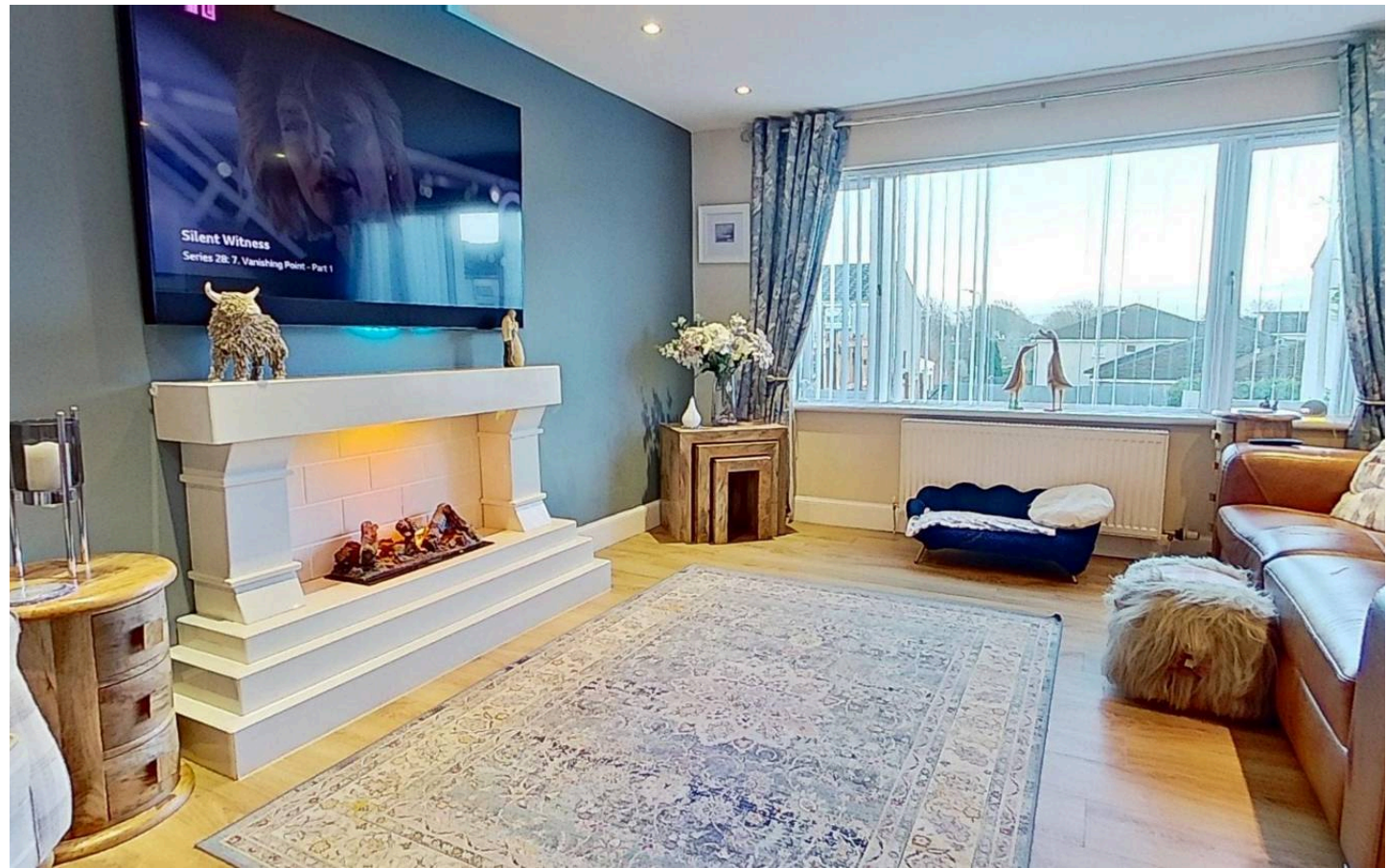
Uphall

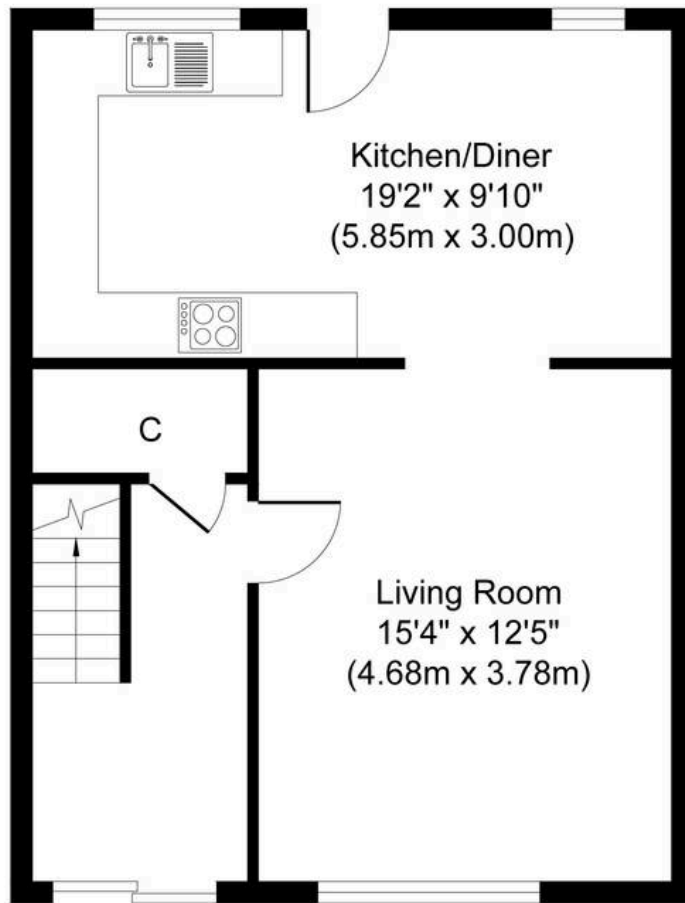
Delightful 3-bed end-terrace house with spacious interior and chain-free purchase option. Open plan living, modern kitchen, fully enclosed landscaped garden. Great locale near town centre and schools, perfect for families seeking comfort and convenience.

Council Tax band: B

Tenure: Freehold

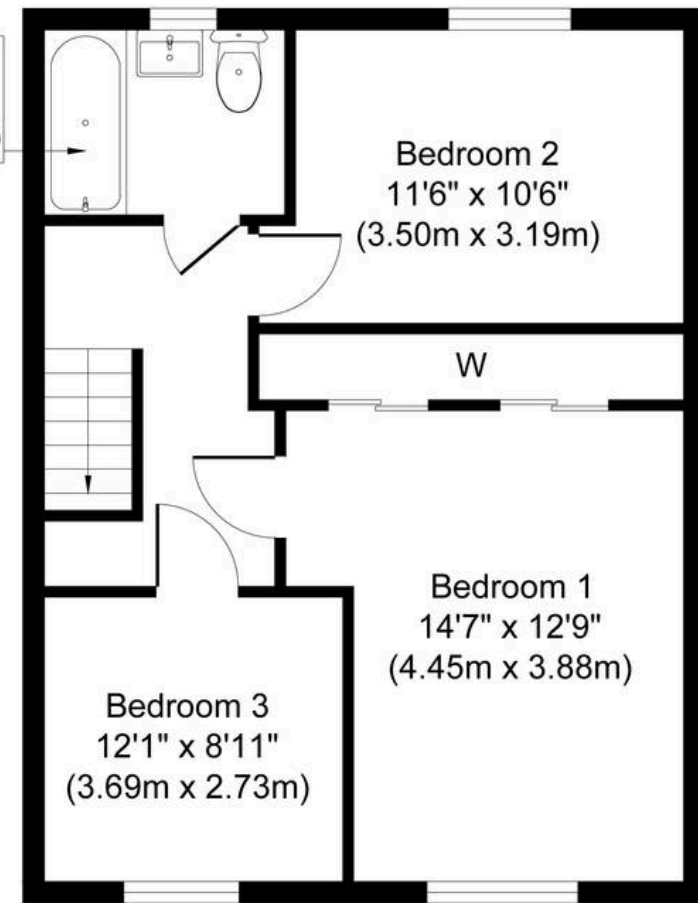
- Beautifully Kept Three Bedroom End Terrace House
- Three Double Bedrooms
- Chain Free Purchase
- Move In Condition Throughout
- Open Plan Livingroom/Diner
- Contemporary Open Plan Kitchen
- Generous Rear Facing Livingroom
- Composite Decked Fully Enclosed Landscaped Garden
- Located Within A Popular Residential Area
- Close To Town Centre And Schooling





Ground Floor
Approximate Floor Area
490 sq. ft
(45.55 sq. m)

Bathroom
6'9" x 5'7"
(2.05m x 1.69m)

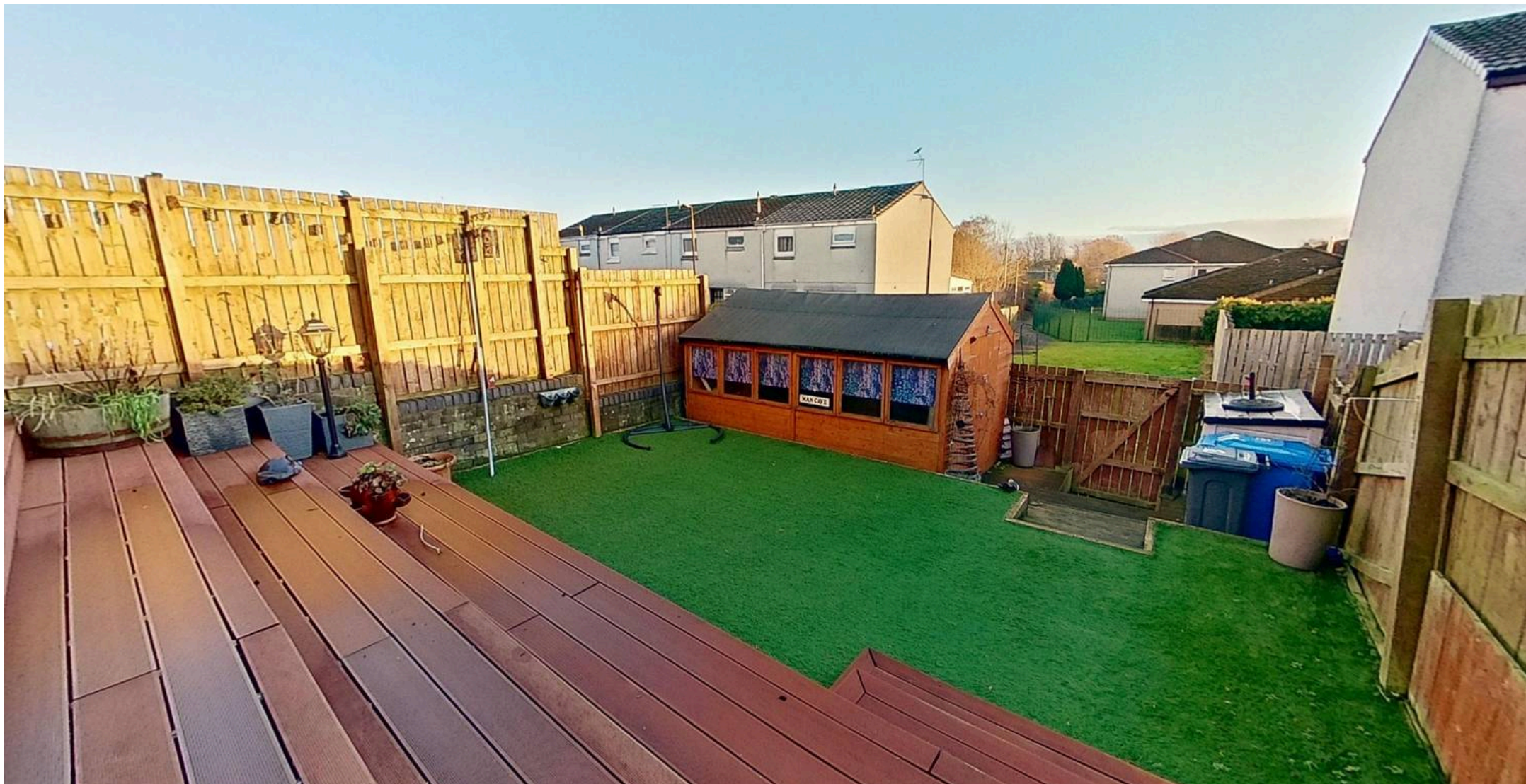


First Floor
Approximate Floor Area
490 sq. ft
(45.55 sq. m)

Whilst every attempt has been made to ensure the accuracy of the floor plan contained here, measurements of doors, windows, rooms and any other items are approximate and no responsibility is taken for any error, omission, or mis-statement. The measurements should not be relied upon for valuation, transaction and/or funding purposes. This plan is for illustrative purposes only and should be used as such by any prospective purchaser or tenant.

The services, systems and appliances shown have not been tested and no guarantee as to their operability or efficiency can be given.

Copyright V360 Ltd 2025 | www.houseviz.com



KnightBain Estate Agents

Knightbain, 4 Greendykes Road, Broxburn - EH52 5AG

01506 852000

info@knightbain.co.uk

www.knightbain.co.uk/

