



Flat 116 Lexington Building, Bow Quarter, 60 Fairfield Road
London

Guide Price £550,000

OLIVER *OJ* JACQUES
EST. 1986

Flat 116 Lexington Building

Bow Quarter, London

Stylish two/three bedroom duplex apartment located in the original Bryant & May factory conversion of Bow Quarter. Including private parking and flexible accommodation we highly recommend an internal viewing.

Council Tax band: D

Tenure: Leasehold

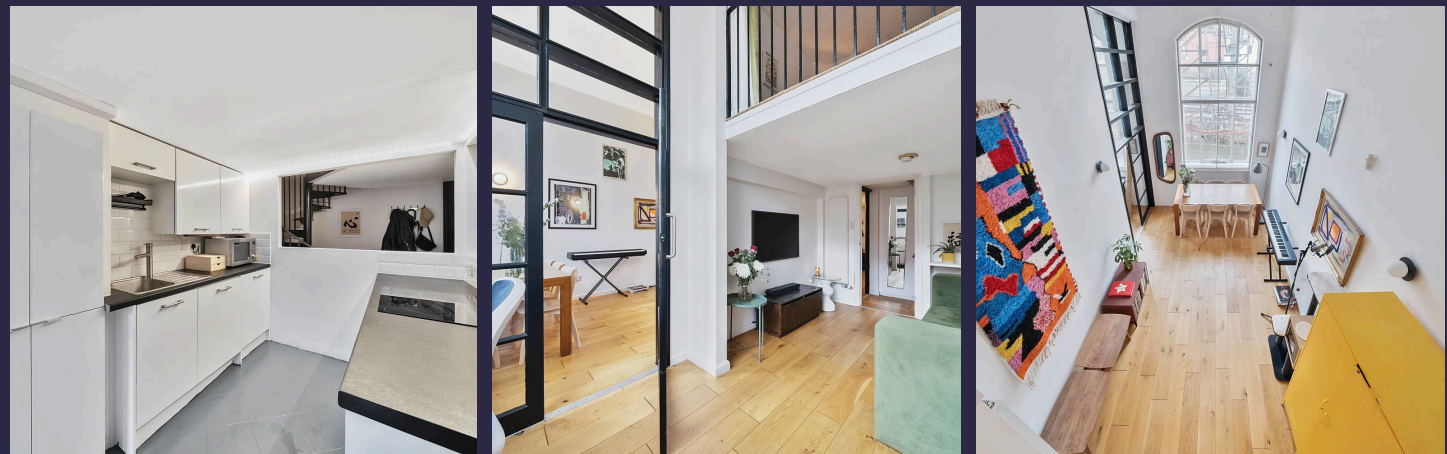
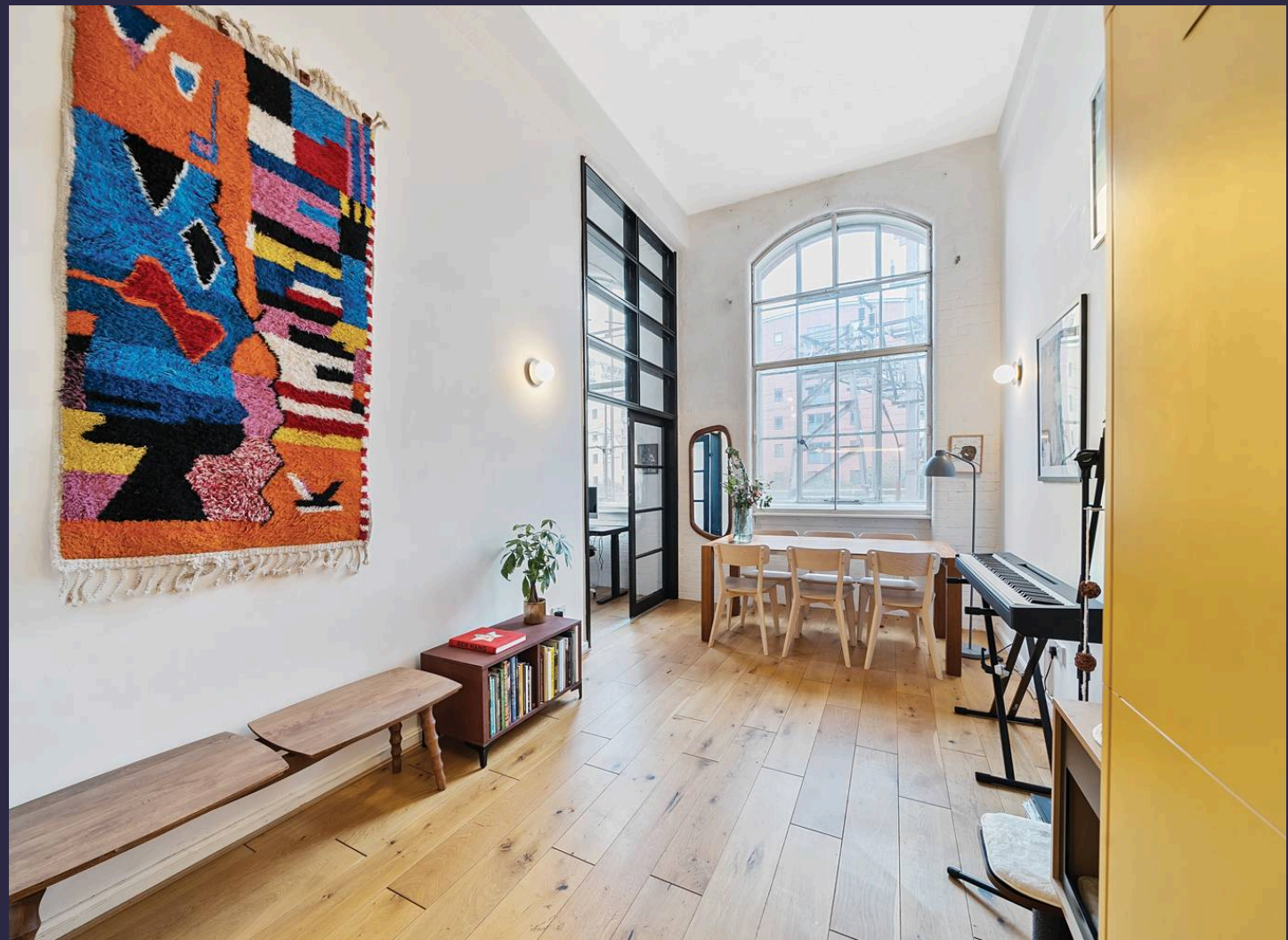
88 Years Remaining on Lease

Service Charge £5489 per annum

Ground Rent £125 per annum

EPC Energy Efficiency Rating: D

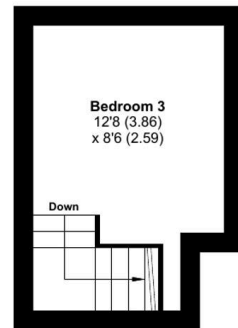
- Stunning Two/Three Bedroom Duplex Apartment
- Original Matchstick Factory Building in Bow Quarter
- Impressive Open Plan Reception/Kitchen with Mezzanine Levels
- 24 Hour Concierge, Communal Gymnasium and Swimming Pool
- 0.4 Miles to Bow Church Station (DLR) & 0.6 Miles to Bow Road Station (District/Hammersmith and City)
- Beautiful Landscaped Grounds, On Site Coffee Shop and Convenience Store
- Beautiful Original Factory Windows



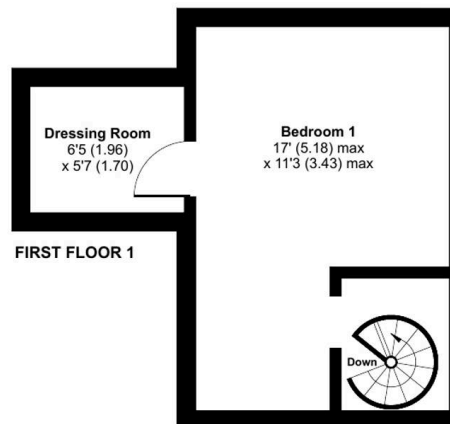
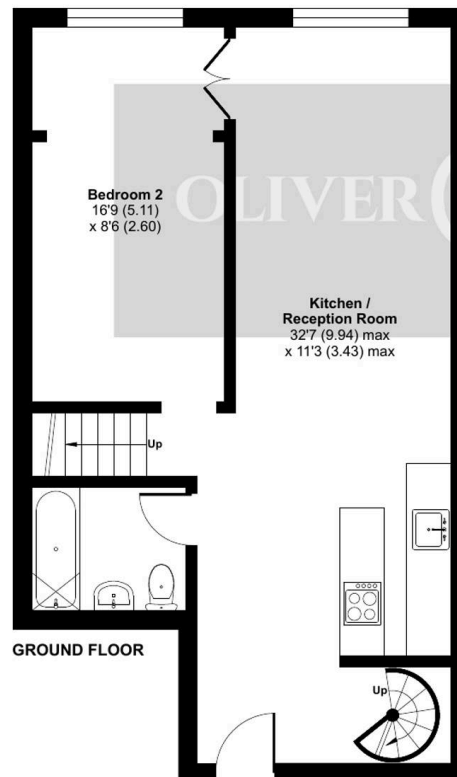
Fairfield Road, London, E3

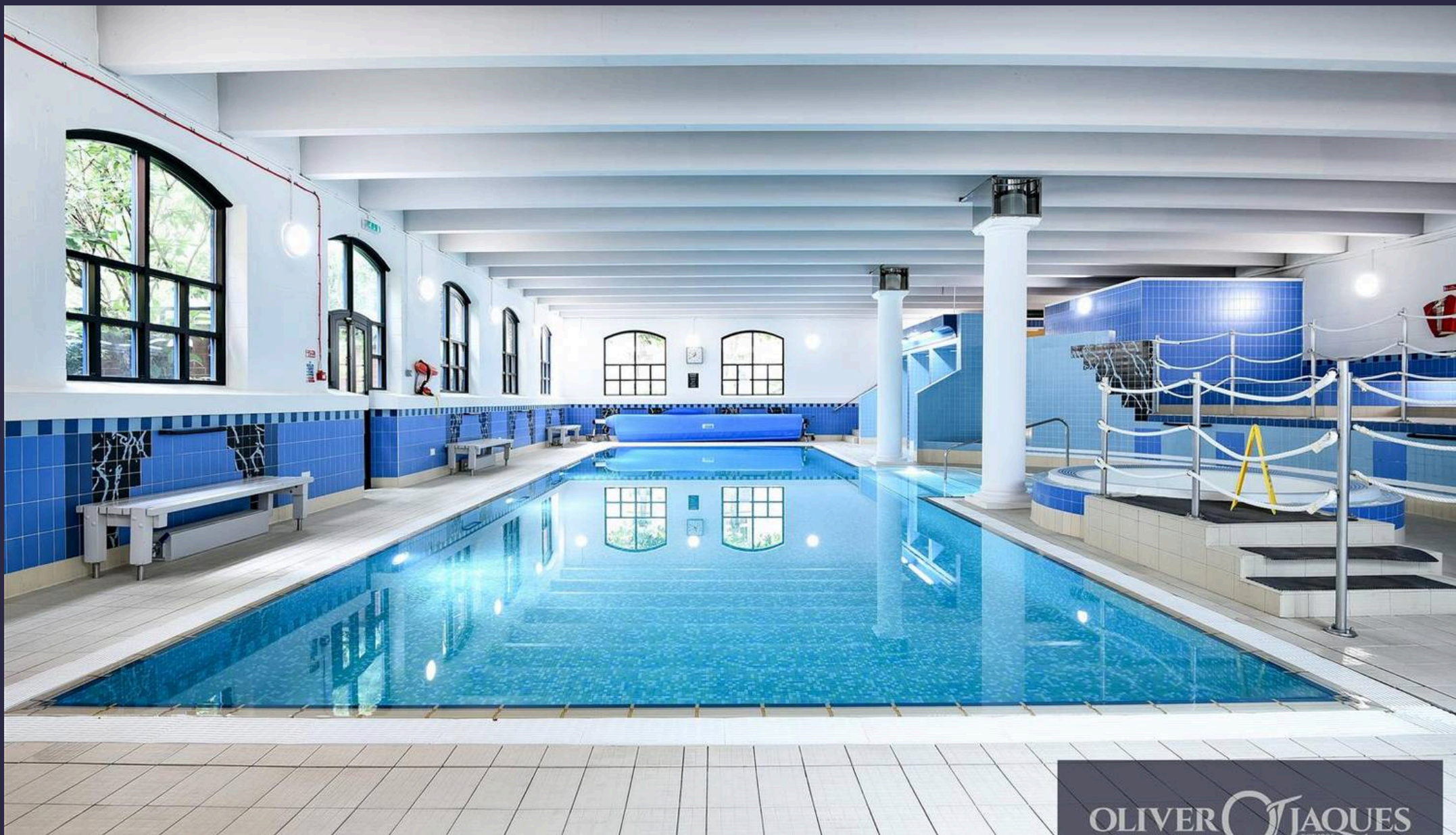
Approximate Area = 889 sq ft / 82.5 sq m

For identification only - Not to scale



FIRST FLOOR 2





Oliver Jaques Bow

Oliver Jaques Estate Agents Ltd, Unit A Arlington Building - E3 2UB

02089800999 • East@o-j.co.uk • o-j.co.uk/