

16b Craigleith Drive

Orchard Brae, EH4 3HQ



4 bed



2 bath



1 public



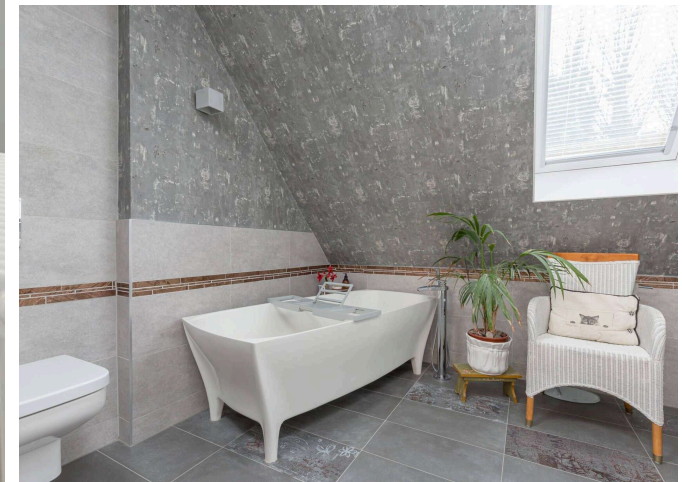
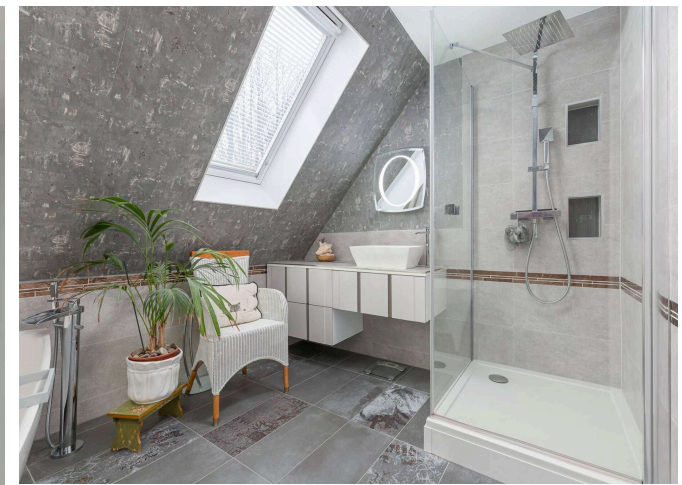
Key Features

- Detached family home
- Spacious living room
- Modern fitted kitchen
- Dining room
- Four double bedrooms
- Family bathroom
- Ensuite bathroom
- Enclosed rear garden
- Driveway and parking
- Gas central heating
- Double glazing

EPC: C

Council Tax: Band: G





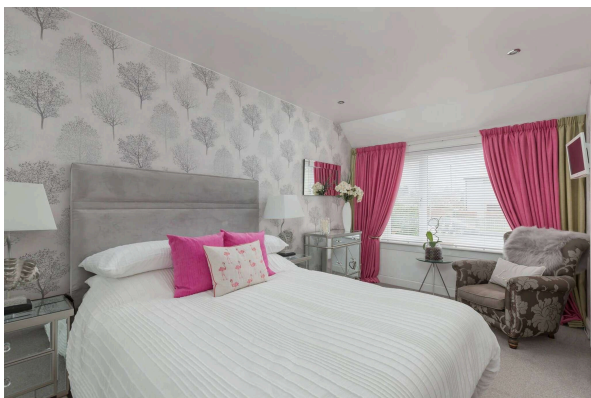
Location

Craigeith is a desirable residential area located just ten minutes' drive from Edinburgh's West End and City Centre.

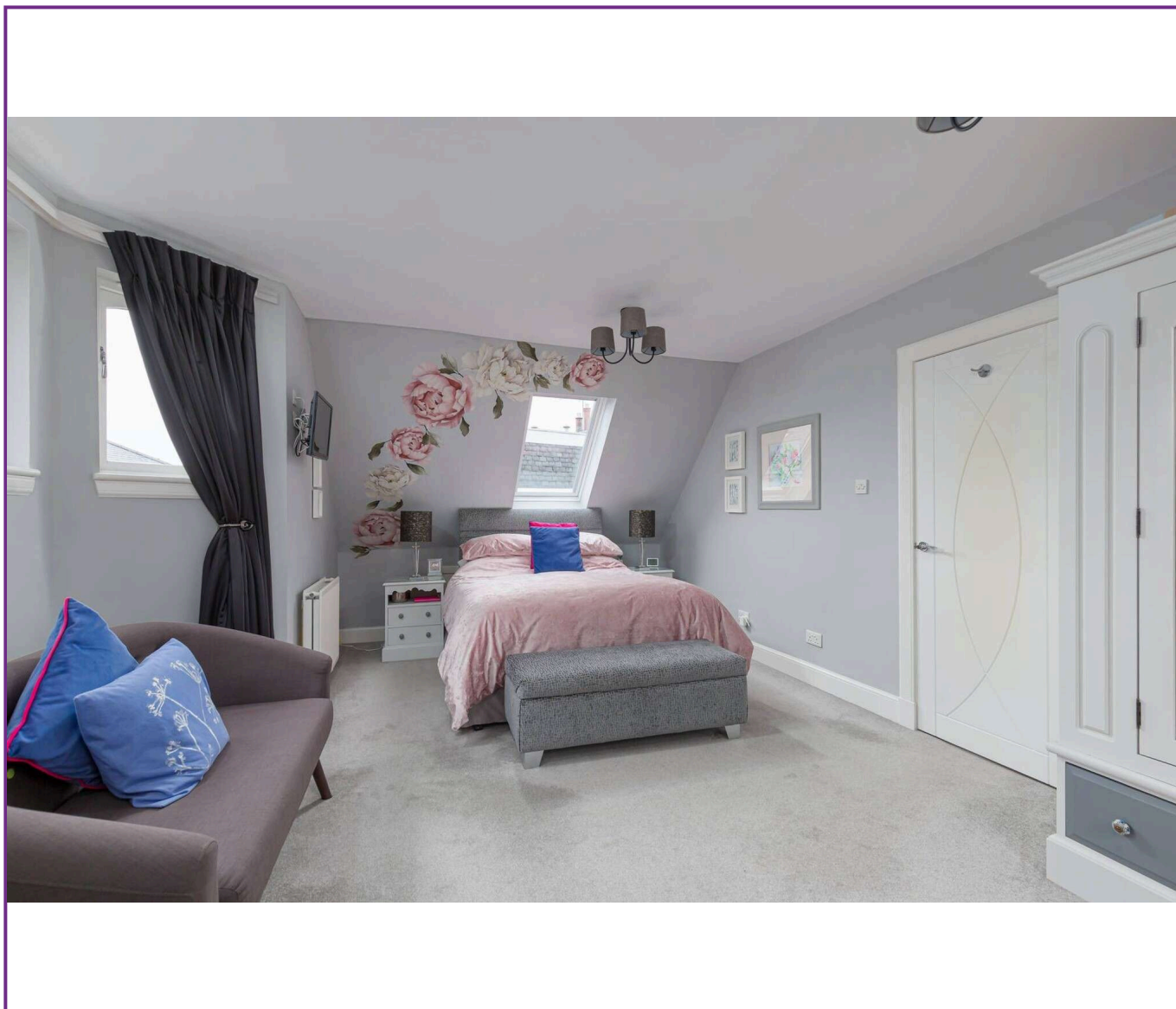
First-class retail amenities at Craigeith Retail Park and nearby Stockbridge with its excellent selection of independent shops, cafes, bars, eateries.

Nearby Green Spaces include: Inverleith Park, Royal Botanic Gardens, Murrayfield and Ravelston Golf courses the Water of Leith and Roseburn Cycle path. There is an excellent selection of schools in the area including the private Schools: Fettes College, Stewart Melville College, The Edinburgh Academy and St George's and Mary Erskine schools.

Craigeith is also well placed for access to all major motorway networks, Edinburgh City Bypass and Edinburgh International Airport
Add the location information here.



Viewing
Tel: 0131 253 2494



116 Colinton Road, Edinburgh EH14 1BY T: 0131 564 1159 E: info@rd-legalservices.co.uk

espc rightmove ZOOPLA



Disclaimer: These particulars do not form part of any contract or missive to be entered into with a prospective purchaser. All statements and measurements contained herein are believed to be correct but are not warranted or guaranteed. Intending purchasers must satisfy themselves as to the accuracy. No guarantee is given as to the working conditions of any appliance mentioned in these particulars. The photographs shown solely belong to RD Legal.