



Wraysbury

Guide Price £440,000 *Freehold*

B. S. BENNETT

Offered with no onward chain and located right in the heart of Wraysbury Village, you will find this charming two-bedroom terraced house. Situated on a most sought after residential development of similar style properties. The tree-lined paths leading up to the property make for a pleasant setting. The accommodation comprises an entrance hall, cloakroom, kitchen, living/dining room and conservatory. On the first floor there are two double bedrooms and a bathroom. Outside, there is an easy to maintain rear garden, a single garage where a car can park in front. Energy Rating: C

Location:

Within walking distance of Wraysbury Primary School and the thriving Thameside village with all the amenities that one could ask for, including charming country pubs, local post office/convenience store, pharmacy, hardware shop, newsagent, The Kitchen Cafe and Co-op. Wraysbury offers a unique opportunity to those seeking to combine traditional values of a village environment together with the accessibility and convenience of modern day living.

Within a short drive you will find Windsor itself, steeped in history with its Castle and Royal connections. Staines town centre provides an excellent array of shopping facilities, restaurants and cinema. Ideal for commuters with Wraysbury and Sunnymeads stations providing direct links into Windsor and London Waterloo, together with easy access of Motorways M25, M4, M3 and London Heathrow Airport.

Services:

Mains gas, electricity, water, main drainage.

Gas fired central heating.

Broadband Availability (according to [ofcom.org.uk](https://www.ofcom.gov.uk)): Standard, Superfast and Ultrafast Full Fibre.

For mobile voice and data coverage: <https://checker.ofcom.gov.uk/en-gb/mobile-coverage>

Local Authority:

Royal Borough of Windsor & Maidenhead. Town Hall, St. Ives Road, Maidenhead, Berkshire, SL6 1RF.

Telephone: 01628 798888

Council Tax Band: E

Payable 2025/26: £2246.09

B. S. BENNETT



B.S. Bennett Estate Agents

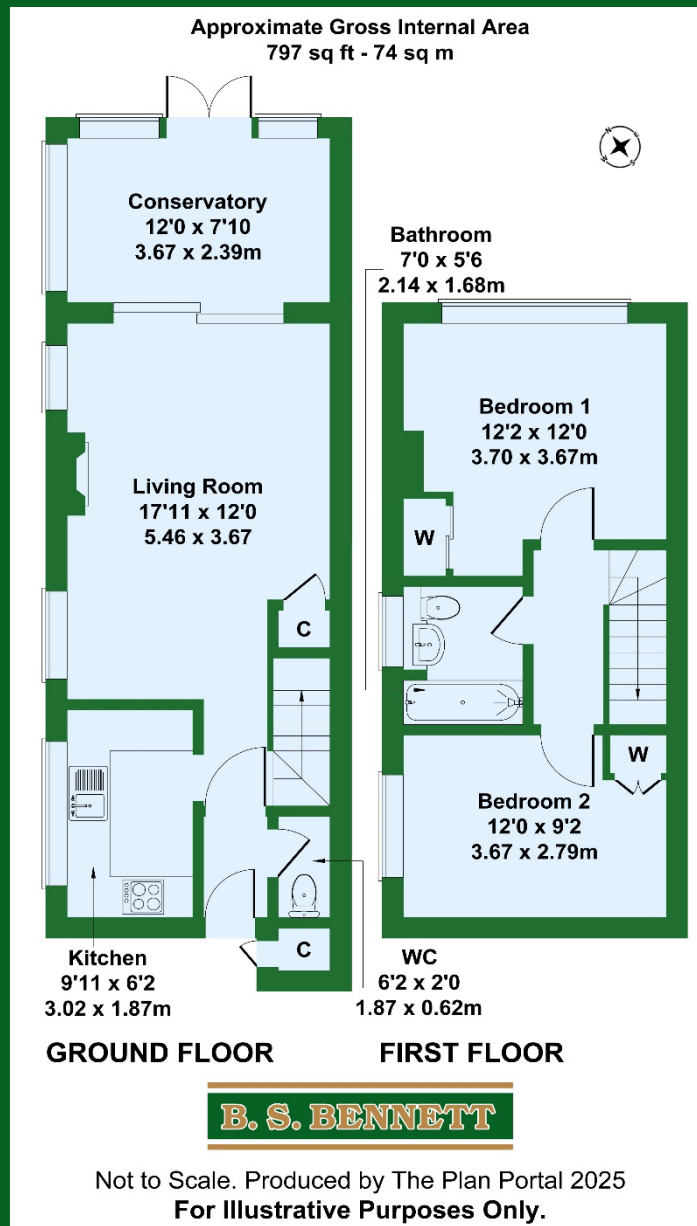
2 Staines Road, Wraysbury, Staines, Middlesex, TW19 5BS

t: 01784 483839 e: post@bsbennett.co.uk

bsbennett.co.uk



B. S. BENNETT



Please Note: We wish to inform prospective purchasers that these sales particulars are set out as a general guide. We have not carried out a detailed survey, or tested the services, appliances and specific fittings. Room sizes are approximate: they are taken between internal wall surfaces and therefore include cupboards/shelves etc. Accordingly, they should not be relied upon for carpets and furnishings. Formal notice is also given that all fixtures and fittings, carpeting, curtains/blinds and kitchen equipment, whether fitted or not, are deemed removable by the seller unless specifically itemised within these particulars. Internal photographs and floor plans are intended as a guide only. Where shown details of the lease, ground rent and service charge have been provided by the seller and their accuracy cannot be guaranteed. Prospective purchasers are advised to obtain verification from their solicitor or surveyor.