



4 Tavern Court, Fernhurst, GU273NN

Guide Price £325,000



# 4 Tavern Court

Fernhurst, Haslemere

- Attractive, Terraced Home
- Open Plan Living/ Dining Room
- Modern Rear Aspect Kitchen
- Upstairs Bathroom
- Two Bedrooms
- Stone's Throw Of Fernhurst Village Amenities
- Garage & Parking
- Courtyard Garden
- No Onward Chain

A lovely part tile hung terrace home situated in the heart of the popular village of Fernhurst.

The accommodation provides a light and airy feeling, with the ground floor comprising a small entrance hall that leads to a bright dual aspect sitting/ dining room with double doors leading to a southerly aspect garden. The neatly appointed kitchen has some built in appliances.

On the first floor there are two bedrooms with the main bedroom having built in storage and the back room enjoying southerly views. There is a family bathroom completely the accommodation.

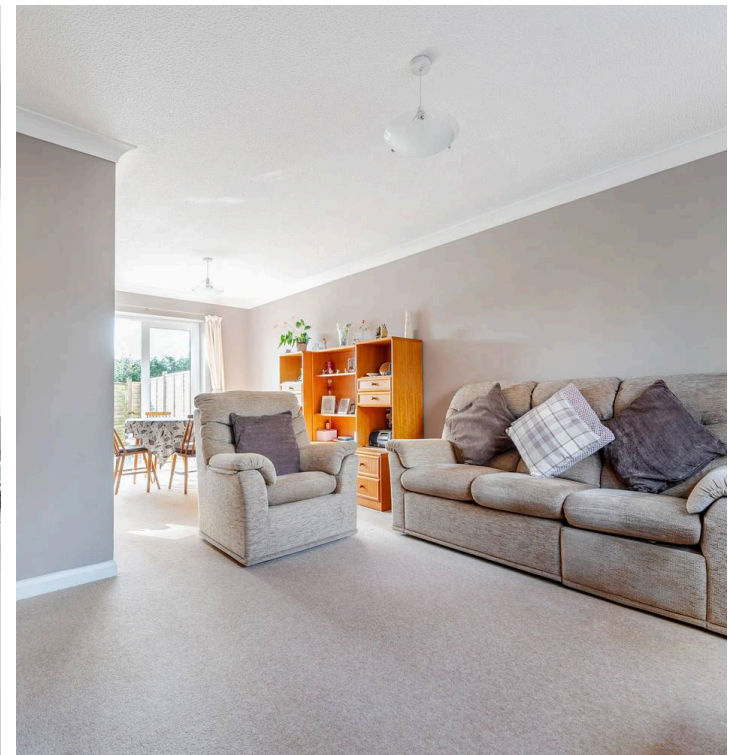
The rear courtyard enjoys a southerly aspect and is laid to a low maintenance patio. The house further benefits from ample visiting and residents parking along with a garage in nearby block.

Mains: Gas, Electric, water, and drainage

EPC: C -

West Sussex C.C Band: D (£2325.83)

Tenure: Freehold





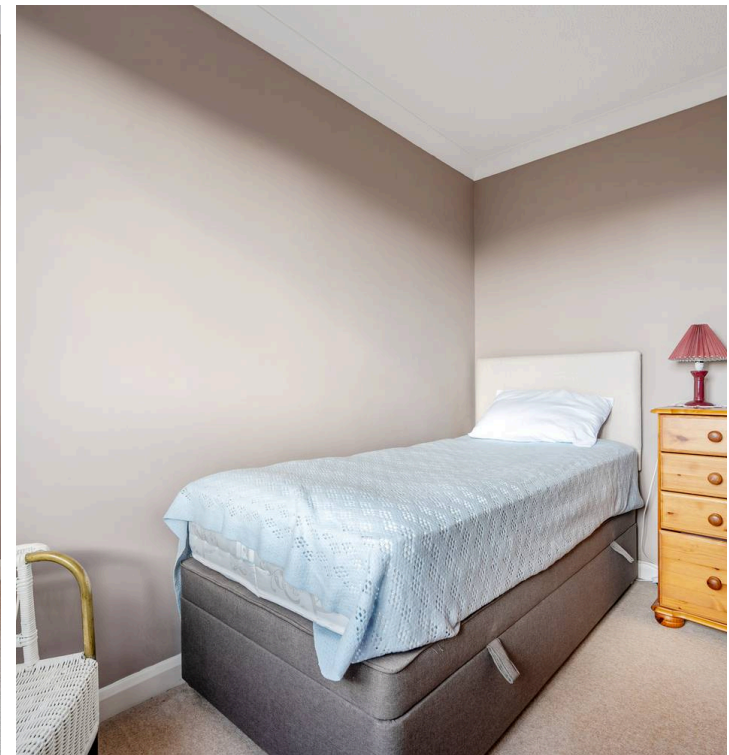
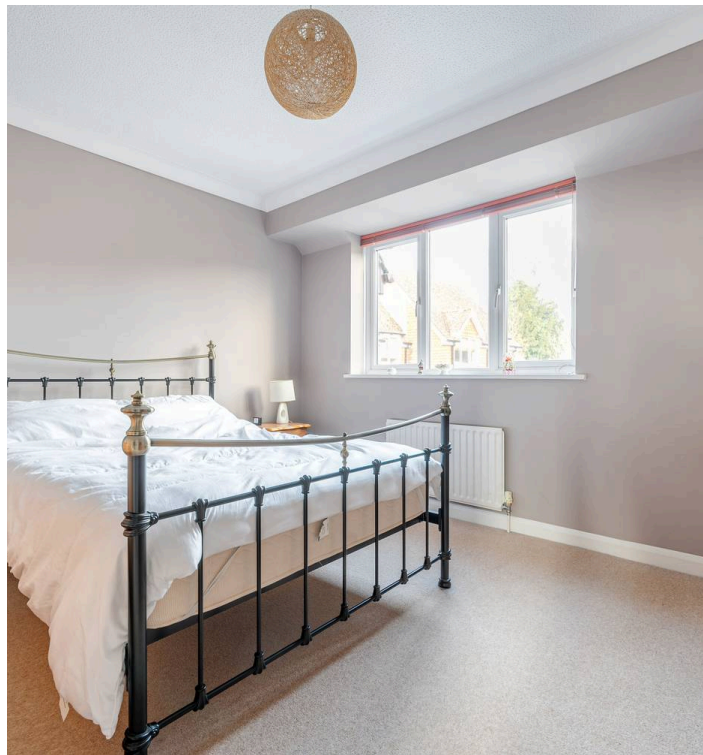
## 4 Tavern Court

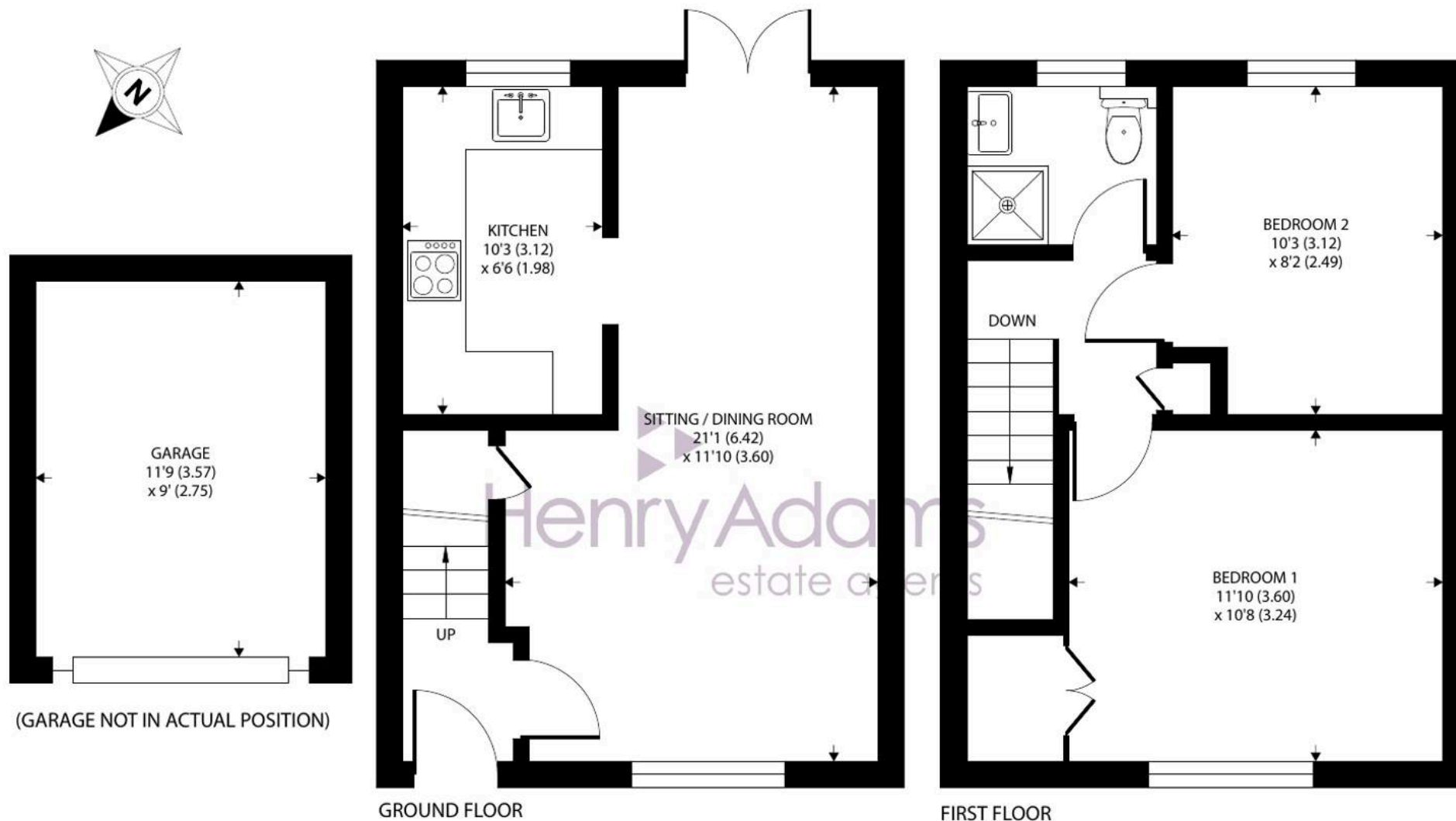
### Location

Conveniently located in the centre of Fernhurst, which offers day-to-day shops and facilities including a popular primary school, greengrocers, post office, chemist, restaurants and a popular pub on the green by the church. The property is also within walking distance of the doctor's surgery. Stunning areas of National Trust with Areas of Outstanding Natural Beauty can be found locally for walking and riding enthusiasts to enjoy. Haslemere is a short drive away and has a wider range of shops, restaurants and coffee houses and leisure facilities including the Haslemere Leisure Centre. There are good road links to London and the south coast and Haslemere mainline station offers a fast train service to London Waterloo in around 49 minutes.

### Directions:

SATNAV: **GU27 3NN** // what3words: erupt.spices.situates





## 4 Tavern Court, Fernhurst, Haslemere

Approximate Area = 624 sq ft / 57.9 sq m

Garage = 106 sq ft / 9.8 sq m

Total = 730 sq ft / 67.7 sq m

For identification only - Not to scale



Floor plan produced in accordance with RICS Property Measurement 2nd Edition,  
Incorporating International Property Measurement Standards (IPMS2 Residential). © nichecom 2025.  
Produced for Henry Adams. REF: 1243599





## Henry Adams - Haslemere

Henry Adams LLP, Georgian Court, High Street, Haslemere - GU27 2LA

01428 644002

[haslemere@henryadams.co.uk](mailto:haslemere@henryadams.co.uk)

[www.henryadams.co.uk/](http://www.henryadams.co.uk/)

Agents Note - Our particulars are for guidance only and are intended to give a fair overall summary of the property. They do not form part of any contract or offer, and should not be relied upon as a statement or representation of fact. Measurements, areas and distances are approximate only. Photographs may include lifestyle shots and pictures of local views. No undertaking is given as to the structural condition of the property, or any necessary consents or the operating ability or efficiency of any service, system or appliance. Please ask if you would like further information, especially before you travel to the property.