

Asking Price £245,000 Freehold



25 East Fairholme Road

Bude, Cornwall, EX23 8HU

www.trace-property.co.uk









25 East Fairholme Road

Bude, Cornwall, EX23 8HU

Asking Price £245,000 Freehold



Key Features

-  Immaculately presented 2 bed bungalow
-  Landscaped garden
-  Garage
-  Short walk to Town Centre and Beaches
-  Gas central heating
-  uPVC double glazed windows
-  Very tastefully decorated throughout
-  Highly sought after quiet residential area

EPC Rating C

Council Tax Band B

www.trace-property.co.uk

25 East Fairholme Road

Bude, Cornwall, EX23 8HU

Asking Price £245,000 Freehold

Entrance Hall

Lounge/Dining Room 5.60m x 3.30m

A lovely, spacious light and airy room with wood effect laminate flooring, radiator, wall and ceiling lights, uPVC double glazed window and door to inner hallway.

Kitchen 2.70m x 2.30m

Modern grey base and wall units, space for washing machine, oven and tall fridge freezer. Wood effect laminate flooring, uPVC double glazed window and door to the rear garden.

Bedroom One 3.30m x 3.30m

Double rear aspect room, carpet, radiator, ceiling light and uPVC double glazed window.

Bedroom Two 2.70m x 2.70m

Front aspect room with wood effect laminate flooring, ceiling light and uPVC double glazed window.

Airing Cupboard 1.70m x 0.80m

Shower Room 2.00m x 1.65m

Large corner shower cubicle with mixer shower, vanity unit with white basin, WC and concealed cistern. Extractor fan.

Outside

Beautifully landscaped rear garden with decked, chipping and lawned areas. Rear gate providing access to pathway and garage. Front garden laid to lawn, with concrete path to front entrance.

Garage

Located in nearby block.

Tenure

Freehold

Services

Mains water, electricity and gas

Overview

Situated in a highly sought after location is this superbly presented, contemporary 2 bed terraced bungalow, within a short walk of Bude Town Centre and it's Beaches.

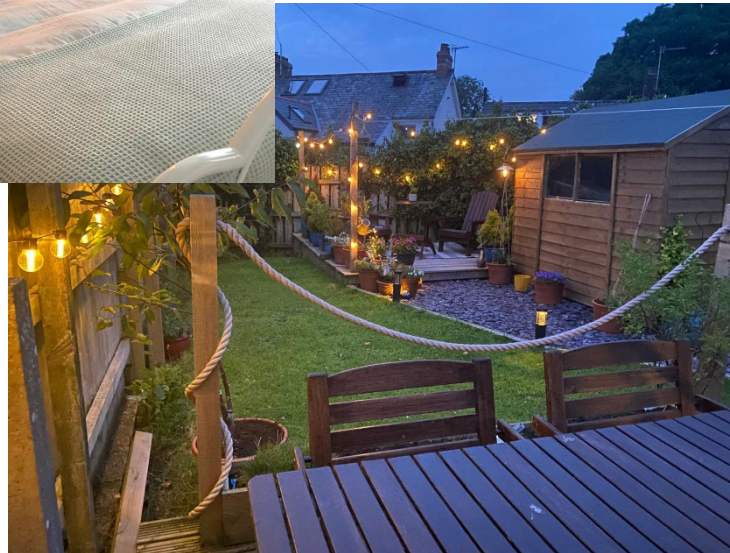
The property comprises, lounge/dining room, modern kitchen with door to rear garden, two bedrooms and shower room.

Garage with parking in front, uPVC double glazed windows and gas fired central heating.

Council Tax Band B, EPC C.

25 East Fairholme Road

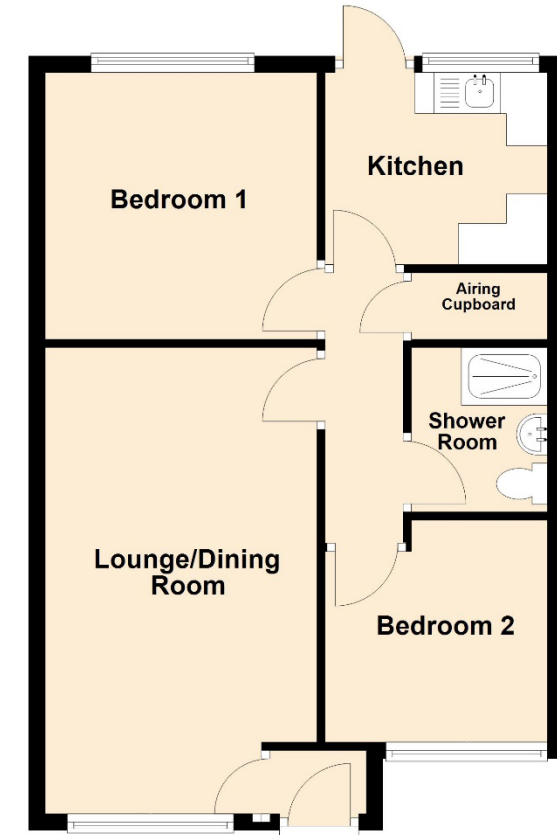
Bude, Cornwall, EX23 8HU



Asking Price £245,000 Freehold

Ground Floor

Approx. 53.0 sq. metres (571.0 sq. feet)



Total area: approx. 53.0 sq. metres (571.0 sq. feet)