

HOME  TRUTHS

Wrightington Bar, Wrightington

WN6 9SD


£1,050 pcm



AVAILABLE FOR SHORT TERM 6 MONTH LET ONLY

FULLY FURNISHED

Delightful two bedroom semi-detached property situated in a popular village location, close to local amenities, schools and transport links. This property is offered fully furnished and is available for a short term six month let only.

This wonderful property comprises briefly of entrance hallway/dining area leading to modern fitted kitchen with fridge freezer, dishwasher and washing machine, utility area and a generous living room. To the first floor are two double bedrooms with double bed, wardrobe and bedside table. The property is neutrally decorated and carpeted upstairs. The modern three piece bathroom consists of low level wc, wash hand basin and panelled bath with electric shower over. The property would be ideal for a professional, couple or small family and offers gardens to the side and rear and off road parking set behind private wooden gates.

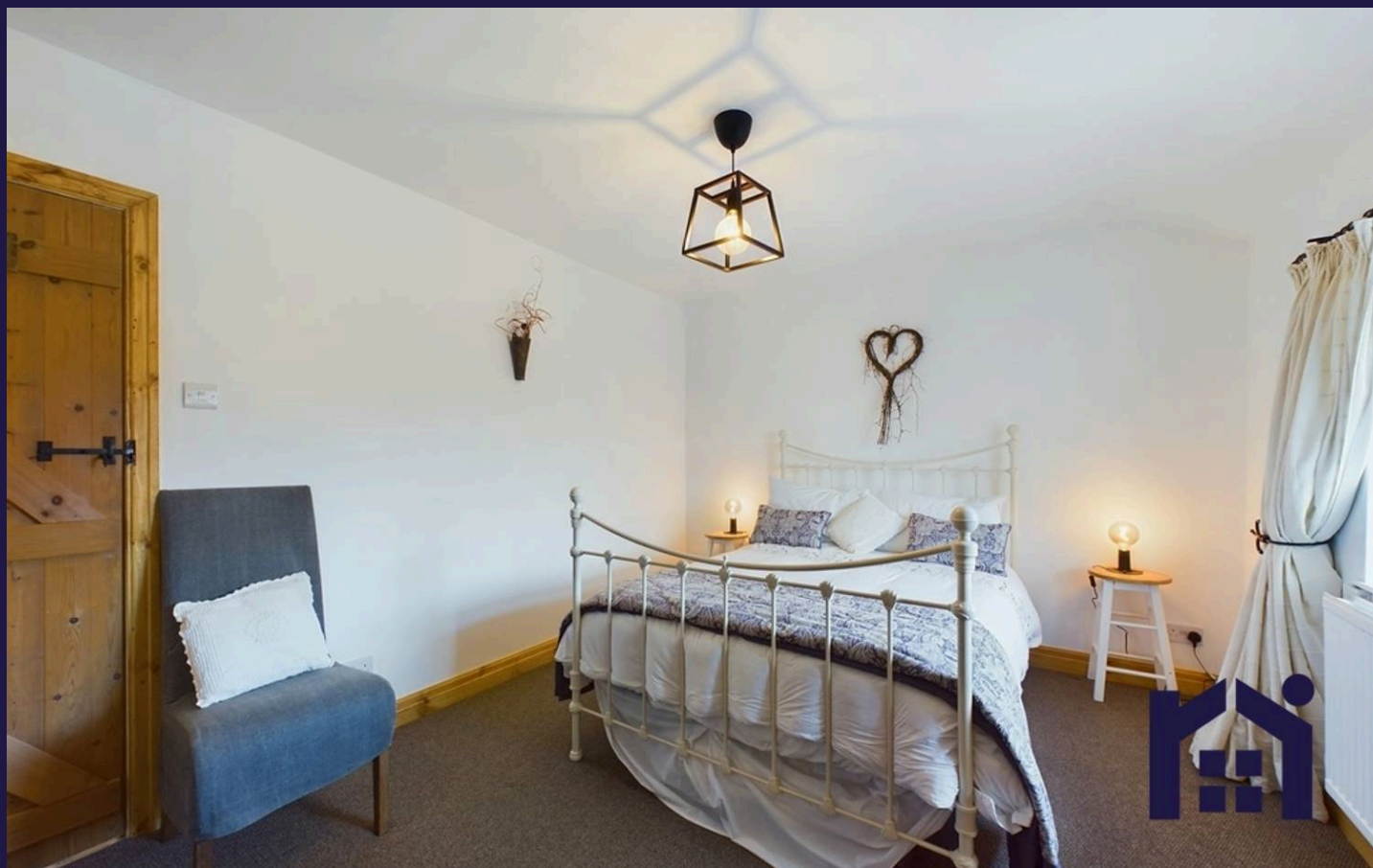


The property is available now and requires a deposit of £1200 including holding deposit of £230.

Council Tax band: C

EPC Energy Efficiency Rating: D

- Two bedroom semi detached
- Fully furnished
- 6 month let only
- Wonderfully presented throughout
- Close to local schools and amenities
- Available now



HOME  TRUTHS

Ecclestone Branch
265 The Green, Ecclestone, PR7 5TF
01257 451673

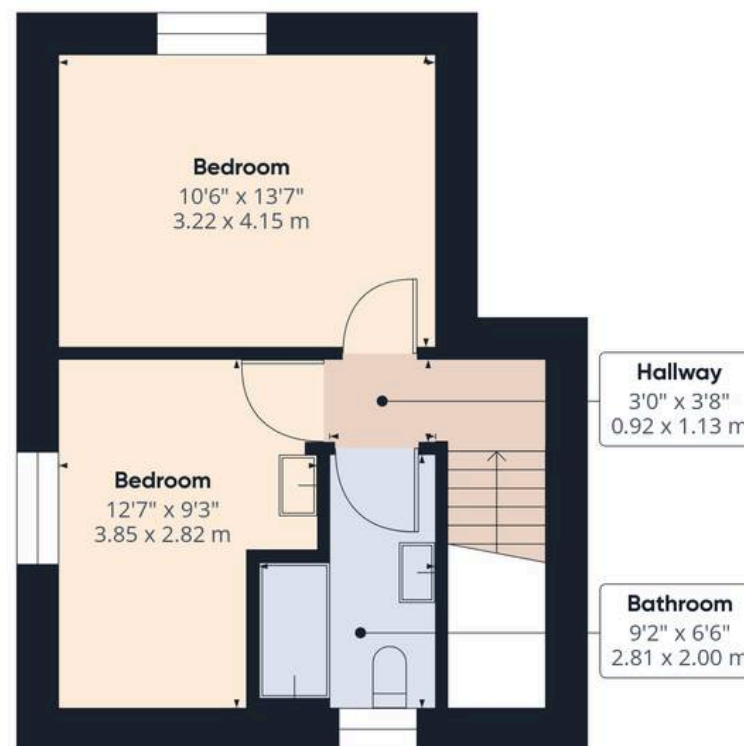
Coppull Branch
244 Spendmore Lane, Coppull, PR7 5DE
01257 794588

www.hometruthslancs.co.uk
office@hometruthslancs.co.uk





Floor 1



Floor 2

Approximate total area⁽¹⁾

836.68 ft²

77.73 m²

Reduced headroom

7.62 ft²

0.71 m²

(1) Excluding balconies and terraces

Reduced headroom

..... Below 5 ft/1.5 m

While every attempt has been made to ensure accuracy, all measurements are approximate, not to scale. This floor plan is for illustrative purposes only.

Calculations were based on RICS IPMS 3C standard. Please note that calculations were adjusted by a third party and therefore may not comply with RICS IPMS 3C.

GIRAFFE360