



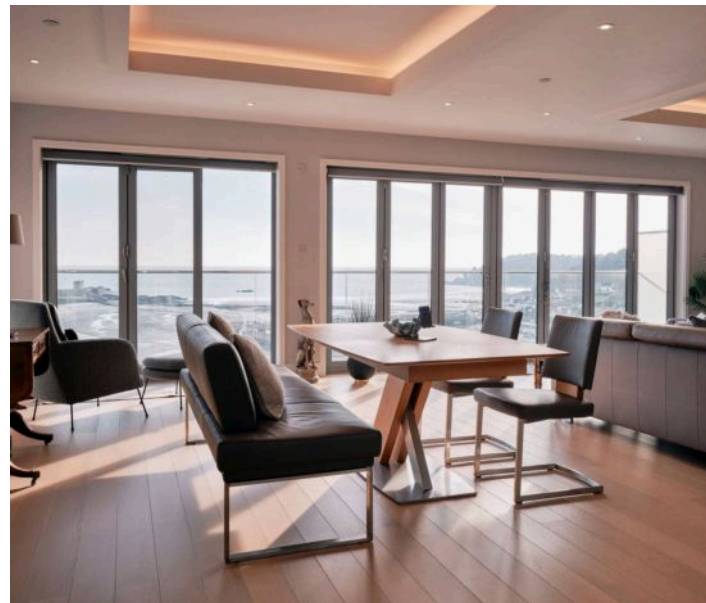
3 Martel View Le Mont De La Rocque, St. Brelade
£2,050,000

BROADLANDS
FINDING YOU A HOME SINCE 1972

House 3 Martel View

Le Mont De La Rocque, Jersey

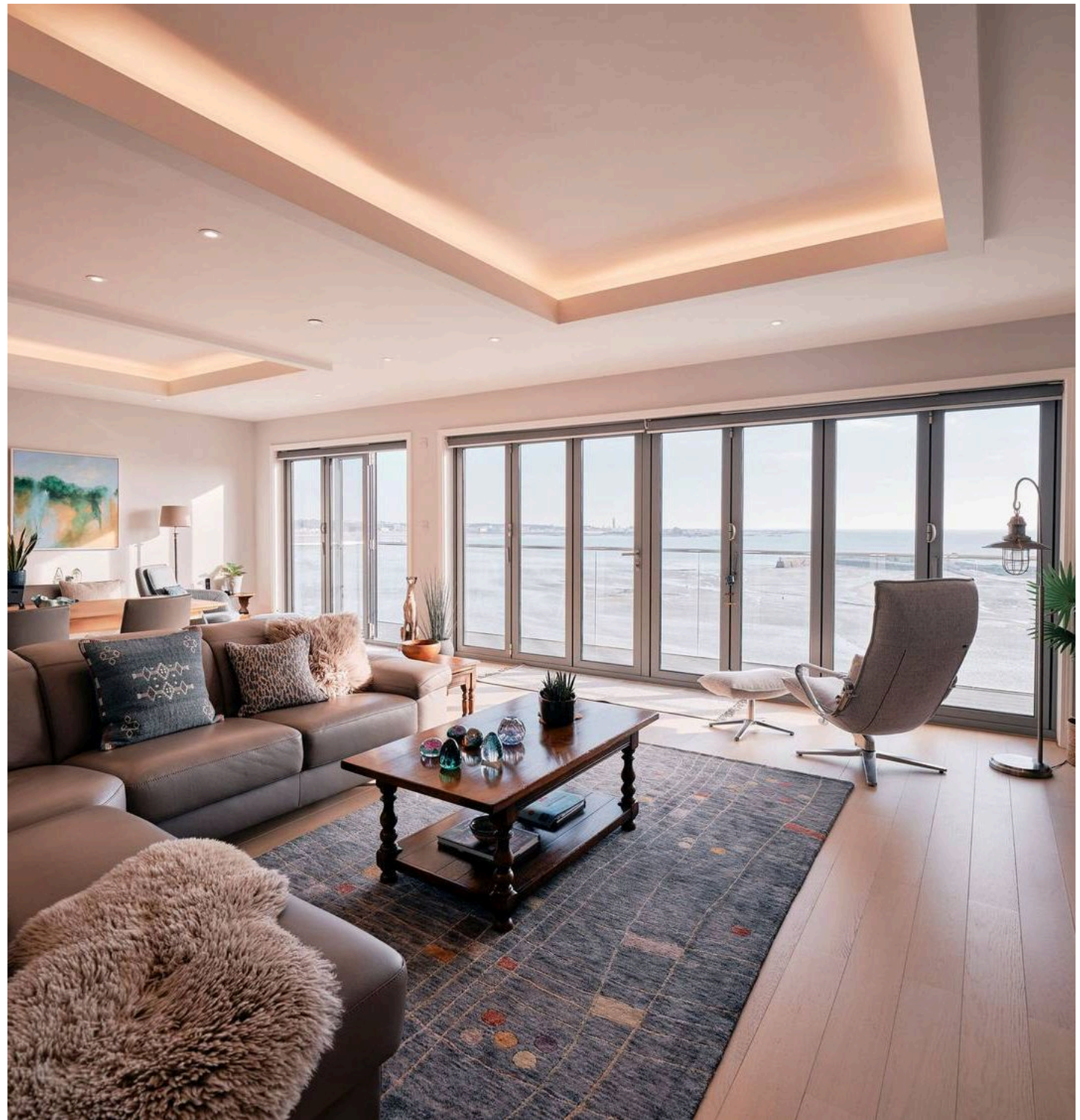
- 3 Generous Bedroom suites all with floor to ceiling sea views!
- Top floor open plan living room, dining, kitchen and balcony all with extraordinary sea views
- South facing, light, light, light all day
- Feeling of space throughout the entire home
- Watch the tide rise and fall, across the entire span of St Aubin Bay
- In immaculate condition
- Garage plus parking for 1, or 2 smaller vehicles
- Envy inducing location above St Aubins village
- Sole agency Charlie 07700 348421 / charlie@broadlandsjersey.com



3 Martel View Le Mont De La Rocque

St. Brelade, Jersey

Marvellous views from St Aubin Harbour, across the entire bay, to the horizon! In immaculate condition this townhouse is more than meets the eye from top to toe! Entering the home on the middle floor, you are greeted by an expansive double height foyer with huge sky lantern above. From here you can head up the open plan staircase to the open plan living space, downstairs to the additional bedrooms, or straight ahead through the double doors into the premiere bedroom suite, with wall to wall bifolding doors onto your own private balcony, stunning sea views, full range of integrated wardrobes and luxury ensuite with stand alone bath tub and walk-in shower. The top floor is an expansive living space flooded with south facing light all day, once the bifolds are open the space flows from kitchen to dining, living, balcony and onwards to the horizon effortlessly. Luxury fully fitted kitchen with built in appliances ready to go. The ground floor features a further 2 bedroom suites. One is a large double bedroom with private balcony, sea views and ensuite shower room. The other, a large double bedroom with private balcony, sea views, walk in wardrobe and luxury spa-like ensuite with bath, shower and double sinks. Featuring integral garage plus parking for 1, or 2 smaller cars. An easy 5 minute stroll down the quaint cobbles of the high street leads you to the village restaurants, cafes and promenade. This home is a definite YES!





Living

Expansive foyer space surrounds the open plan staircase, opening the property up to be light and bright throughout. The top floor features the kitchen dining and living with a WC on the middle floor. The ground floor features a bonus large linen cupboard.

Sleeping

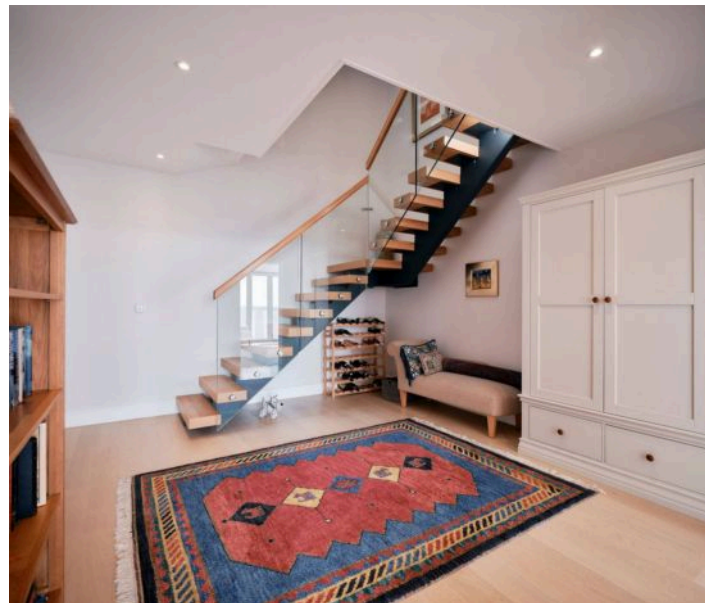
Three brilliant double bedroom suites all with sea views and private balconies!

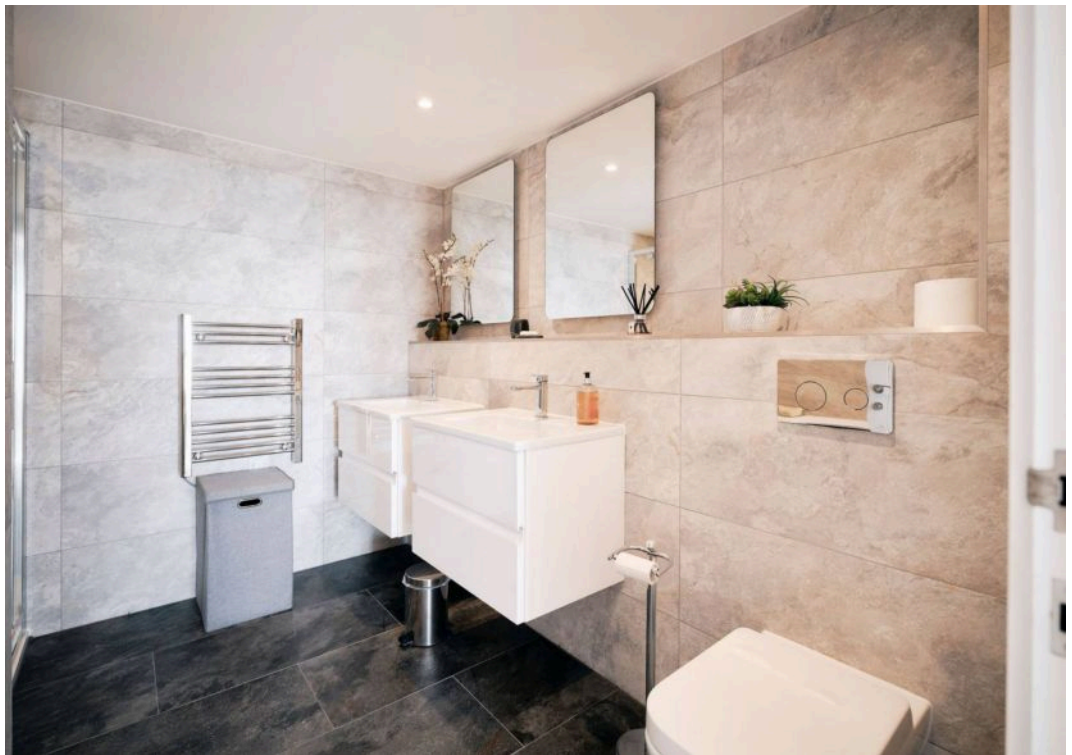
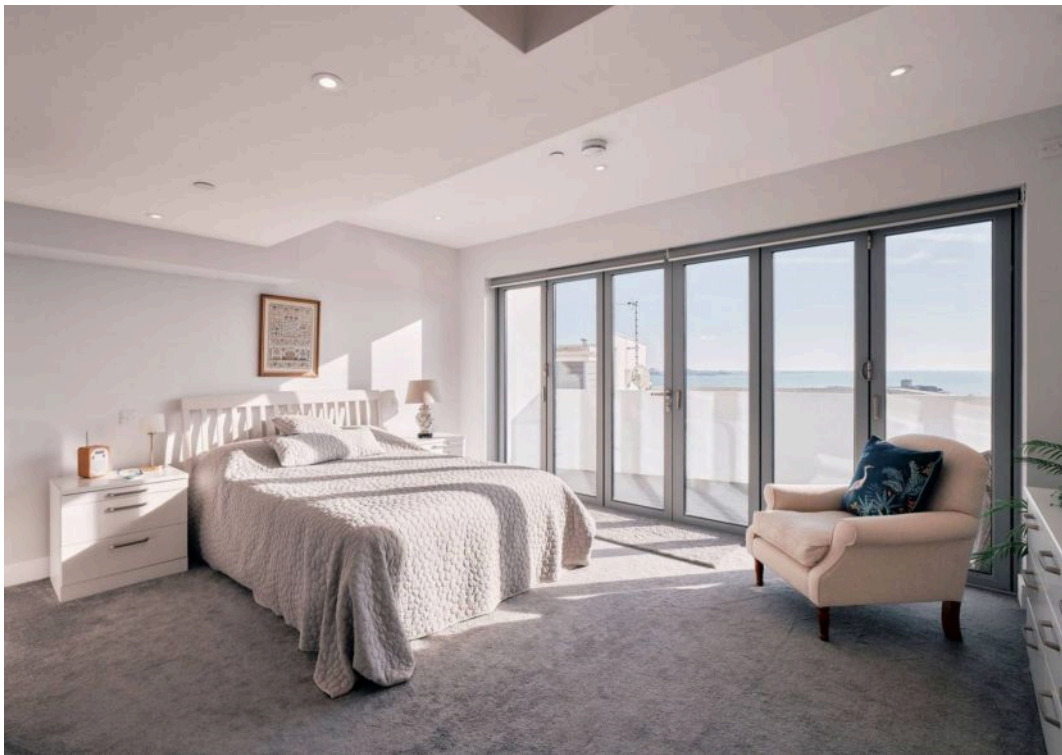
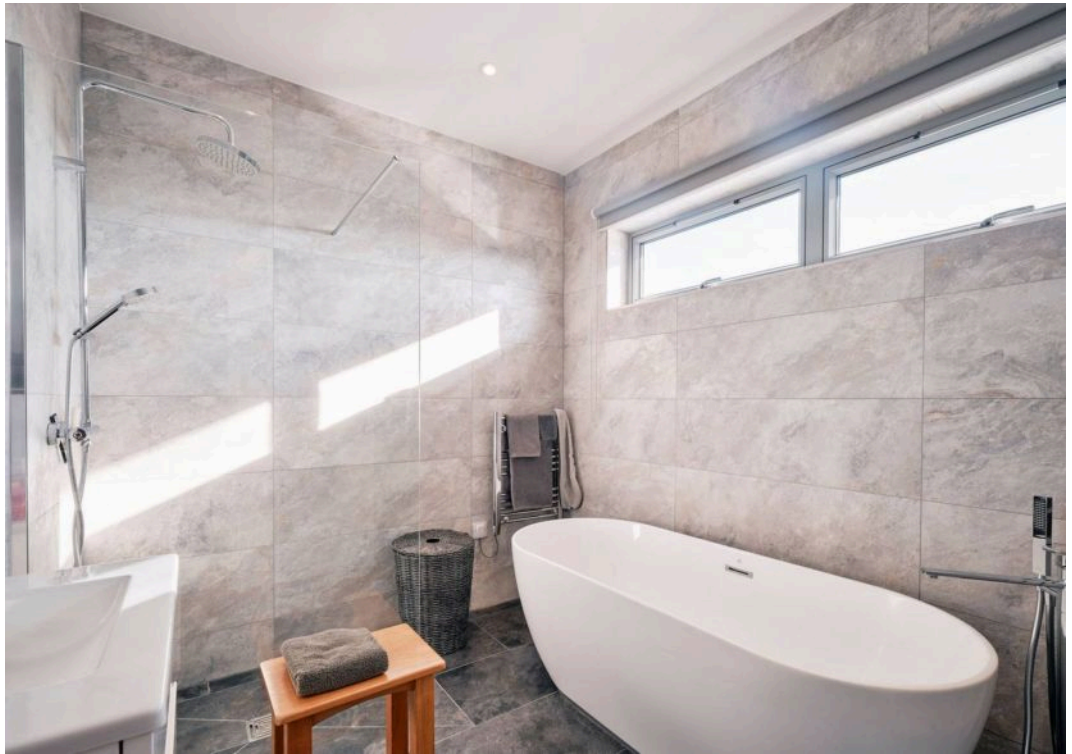
Outside

Private Balconies to every floor with sea views from all of them

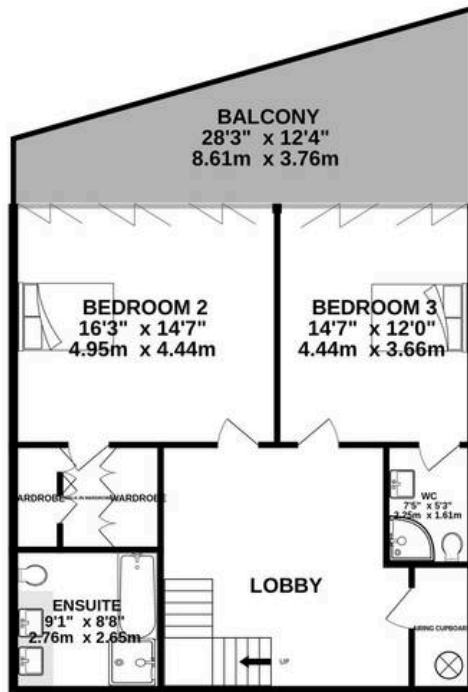
Services

Engineered wood flooring throughout. Electric underfloor heating throughout all floors. All mains. Double glazed. Private garage plus parking for one, or two smaller cars.

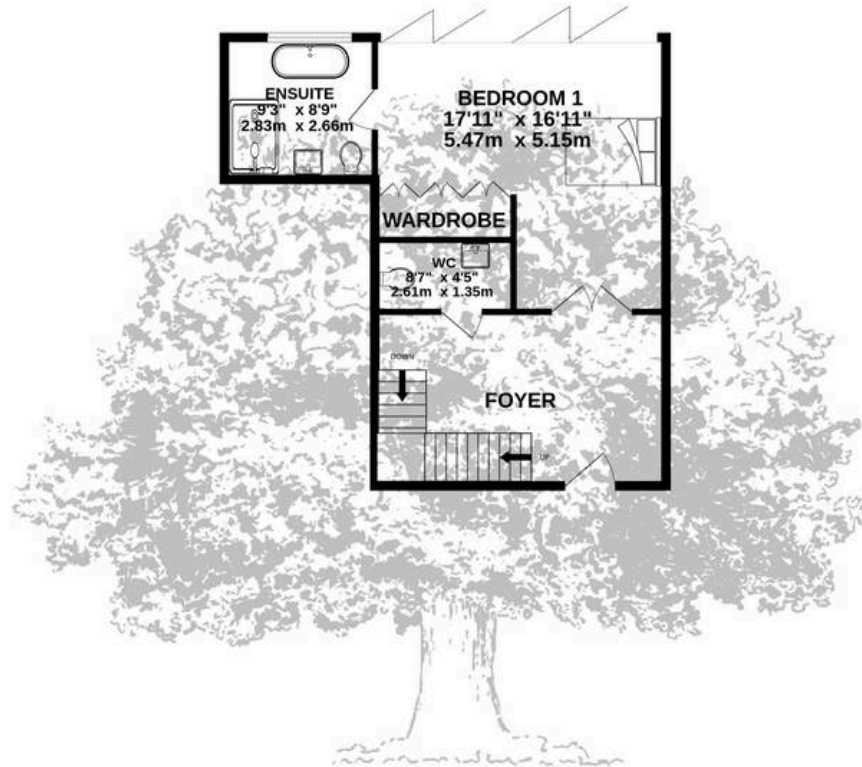




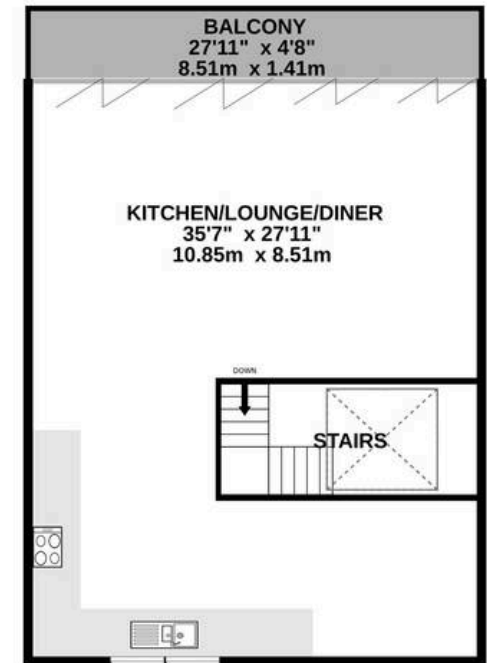
NEW FLOOR
839 sq.ft. (78.0 sq.m.) approx.



GROUND FLOOR
576 sq.ft. (53.5 sq.m.) approx.



FIRST FLOOR
994 sq.ft. (92.4 sq.m.) approx.



TOTAL FLOOR AREA : 2410 sq.ft. (223.9 sq.m.) approx.

Whilst every attempt has been made to ensure the accuracy of the floorplan contained here, measurements of doors, windows, rooms and any other items are approximate and no responsibility is taken for any error, omission or mis-statement. This plan is for illustrative purposes only and should be used as such by any prospective purchaser. The services, systems and appliances shown have not been tested and no guarantee as to their operability or efficiency can be given.
Made with Metropix ©2025



Broadlands

Broadlands Estates, Library Place - JE2 3NL

01534 880770 • enquiries@broadlandsjersey.com • www.broadlandsjersey.com/

BROADLANDS

FINDING YOU A HOME SINCE 1972