

LEASEHOLD



Apartment

**SELHURST ROAD,
SOUTH NORWOOD,
LONDON,
SE25 6XD**

£219,950

FEATURES

Spacious 1 Bedroom Penthouse Apartment

Requiring some TLC

Double Glazed windows

Off Street Parking

Communal Rear Garden

Council Tax Band B

EPC Rating D

Lease is 125 years from 1st July 1985

Ground Rent is £100 per annum (Rising)

Maintenance Charges are £1,031.49 half yearly



1



1



1



1 Bedroom Apartment located in South Norwood

Bright and Spacious 1 Bedroom Penthouse Apartment in a modern development. Situated within easy reach of Norwood Junction Overground, South Norwood High Street, Sainsbury's and South Norwood Park. Features; Generous sized lounge, Kitchen, Bathroom, Double bedroom, Double glazed windows, Off street parking, Communal rear garden and requiring some TLC. Council Tax Band B. EPC Rating D. No Onward Chain. Call Now To View!

LOUNGE 17' 6" x 11' 10" (5.35m x 3.63m)

KITCHEN 7' 6" x 6' 2" (2.3m x 1.90m)

BATHROOM 6' 3" x 6' 2" (1.92m x 1.90m)

BEDROOM 11' 9" x 8' 2" (3.60m x 2.5m)

COMMUNAL REAR GARDEN

OFF STREET PARKING

LEASEHOLD INFORMATION:

The Lease is 125 years from July 1985

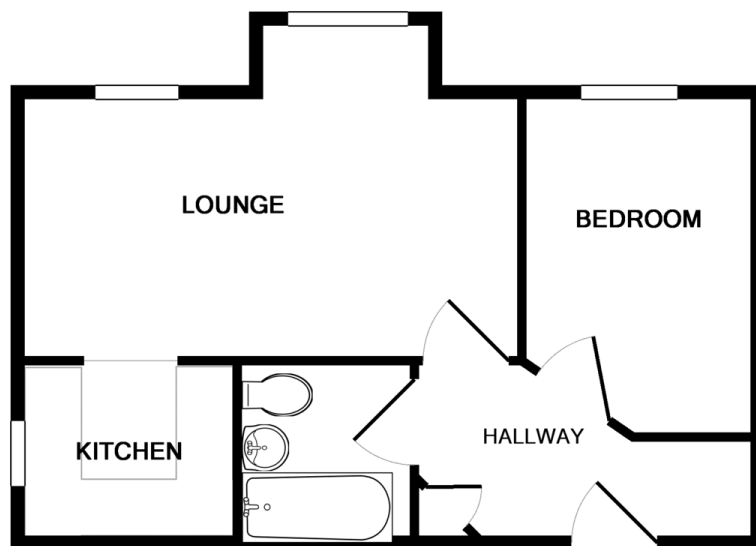
The Ground Rent is £100 rising to £150

The Maintenance Charges are £1,031.49 half yearly

BENSON & PARTNERS | 4 – 6 STATION ROAD, LONDON, SE25 5AJ



BENSON & PARTNERS | 4 – 6 STATION ROAD, LONDON, SE25 5AJ



Whilst every attempt has been made to ensure the accuracy of the floor plan contained here, measurements of doors, windows, rooms and any other items are approximate and no responsibility is taken for any error, omission, or mis-statement. This plan is for illustrative purposes only and should be used as such by any prospective purchaser. The services, systems and appliances shown have not been tested and no guarantee as to their operability or efficiency can be given
Made with Metropix ©2018

Contact Us On:

020 8653 3444

southnorwood@bensonpartners.co.uk

www.bensonpartners.co.uk

Council Tax Band: B

Score	Energy rating	Current	Potential
92+	A		
81-91	B		
69-80	C		73 C
55-68	D	56 D	
39-54	E		
21-38	F		
1-20	G		

Agents Note: Whilst every care has been taken to prepare these particulars, they are for guidance purposes only. All measurements are approximate and are for general guidance purposes only and whilst every care has been taken to ensure their accuracy, they should not be relied upon and potential buyers are advised to recheck the measurements.