



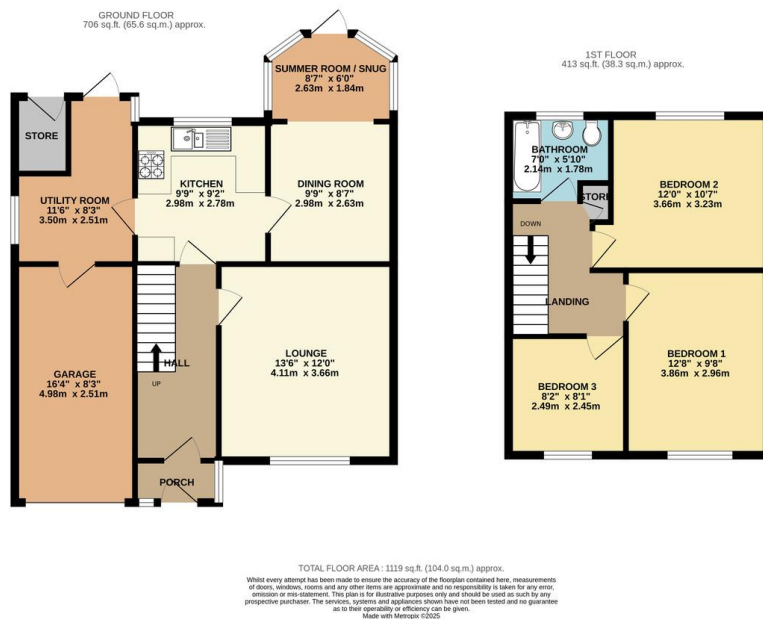
FOR SALE

3 Bed Detached House in Baldwin Road, Leicester LE2 6HA
£325,000

Spacious three bedroom detached family home on the Knighton / Wigston borders in LE2 set on a substantial plot with development potential. Features a garage, second carport, rear summer room, landscaped gardens, and ample off-road parking. Offered chain-free. Contact Phillips George to view.



EPC to follow



- Detached
- Three Bedrooms
- Larger Than Average Plot
- Neatly Presented Throughout
- Highly Popular Location
- Garage
- Further Carport
- No Upward Chain

Agents Note: Whilst every care has been taken to prepare these sales particulars, they are for guidance purposes only. All measurements are approximate are for general guidance purposes only and whilst every care has been taken to ensure their accuracy, they should not be relied upon and potential buyers are advised to recheck the measurements.

