



84 Hall Farm Road, Melton

Guide Price **£286,000**





84 Hall Farm Road

Melton, Woodbridge

A three bedroom semi-detached home situated in Melton.

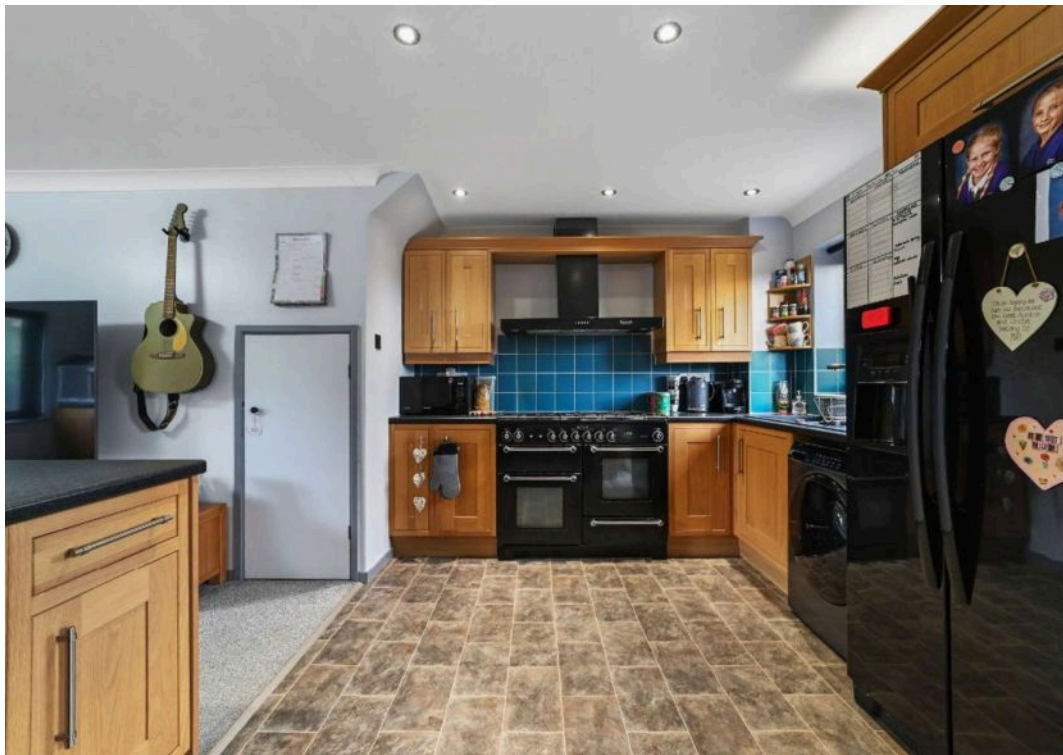
Council Tax band: C

Tenure: Freehold

EPC Energy Efficiency Rating: C

EPC Environmental Impact Rating: C



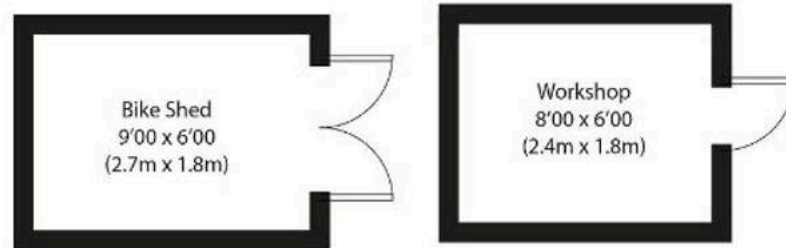




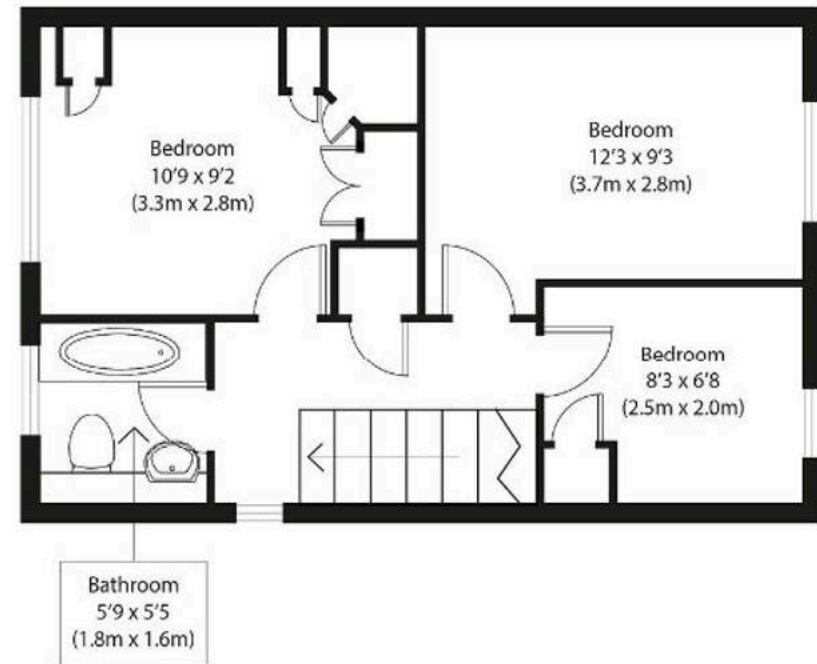
Approximate Gross Internal Area
Main House 760 sq ft (71 sq m)
Outbuildings 100 sq ft (9 sq m)
Total 870 sq ft (81 sq m)

Disclaimer: Floorplan measurements are approximate and are for illustrative purposes only. While we do not doubt the floor plan accuracy and completeness, you or your advisors should conduct a careful, independent investigation of the property in respect of monetary valuation. Copyright: www.cheltenhamgroup.co.uk

Potters



Ground Floor



First Floor



Potters Estate Agents

Potters Estate Agents, 6 Market Hill - IP12 4LU

01394 447487 • enquiries@pottersestateagents.com • www.pottersestateagents.com/