

26 Riverside Mills, Willow Grove, Boroughbridge, YO51 9FX

£130,000
FOR A 50% SHARE

ESTATE AGENTS • LETTING AGENTS • CHARTERED SURVEYORS

26 Riverside Mills, Willow Grove, Boroughbridge, YO51 9FX

A spacious and well-presented three-bedroom semi-detached house with parking and attractive garden, situated in this delightful position near the Riverside, just a short distance from Boroughbridge town centre. This modern property, which was built in 2021, provides generous accommodation, arranged over three levels. On the ground floor there is a spacious sitting room with patio doors leading to the garden, together with a dining kitchen with stylish fitted units. On the upper floors are three good-sized bedrooms, a modern bathroom and en-suite shower room.

GROUND FLOOR ENTRANCE HALL

SITTING ROOM

A spacious reception room with glazed doors, leading to the garden and contemporary feature fire. Patio doors lead out to the south-facing garden.

KITCHEN

A bright kitchen with space for a dining table. The kitchen comprises a range of modern fitted units with gas hob and integrated oven and Samsung washer / dryer.

FIRST FLOOR BEDROOM 2

A good-sized double bedroom overlooking the marina

BEDROOM 3

A further bedroom.

BATHROOM

A white suite comprising WC, washbasin, and bath with shower fitting above.

SECOND FLOOR BEDROOM 1

A large double bedroom.

SUPERB EN-SUITE SHOWER ROOM

A white suite comprising WC, washbasin and walk-in shower.

OUTSIDE

Attractive rear garden with artificial grass and paved and decked sitting areas. Allocated tandem off-road parking.

AGENT'S NOTES

The property is a shared ownership home, 50% of the property is available to purchase on a long leasehold basis, with an original lease of 125 years.

Buyers of a shared ownership property are required to meet the eligible occupier criteria.

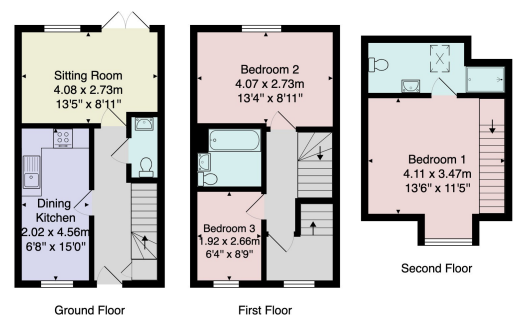
100% of the property is also available to purchase if required, on a freehold basis.

The property has gas central heating and double glazing.

Location

The property is situated in this delightful position on the edge of this popular new development close to the Riverside and just a short distance from Boroughbridge town centre, where there is an excellent range of amenities on offer.

Council Tax Band - D



Total Area: 82.0 m² ... 883 ft²

All measurements are approximate and for display purposes only.

No liability is accepted by either the agency or Box Property Solutions Ltd as to the exact measurements of the rooms.

Verity Frearson

26 Albert Street, Harrogate,
North Yorkshire, HG1 1JT

For all enquiries contact us on:

01423 562531

sales@verityfrearson.co.uk

