



Enhanced with AI by STREET

HW

ESTATE AGENTS

Cornwall Court Wilbury Avenue, Hove
£290,000



Cornwall Court Wilbury Avenue

Hove, Hove

This charming 2-bedroom flat in vibrant Oakwood boasts a south-facing balcony flooding the interior with light. With spacious living area, chef's kitchen, double bedrooms, ample storage, parking, and easy commuting, this modern urban abode is a must-see!

Council Tax band: B

Tenure: Leasehold

EPC Energy Efficiency Rating: C

EPC Environmental Impact Rating: B

- Two Double Bedrooms
- South Facing Balcony
- Lots of Natural Light
- Non-Allocated Parking
- Excellent Condition Throughout
- Good Storage
- Close to Station
- Bike Store
- Gas Central Heating / Double Glazing





Wilbury Avenue

Approx. Gross Internal Area :- 61.4 sq.m. 660.90 sq.ft.

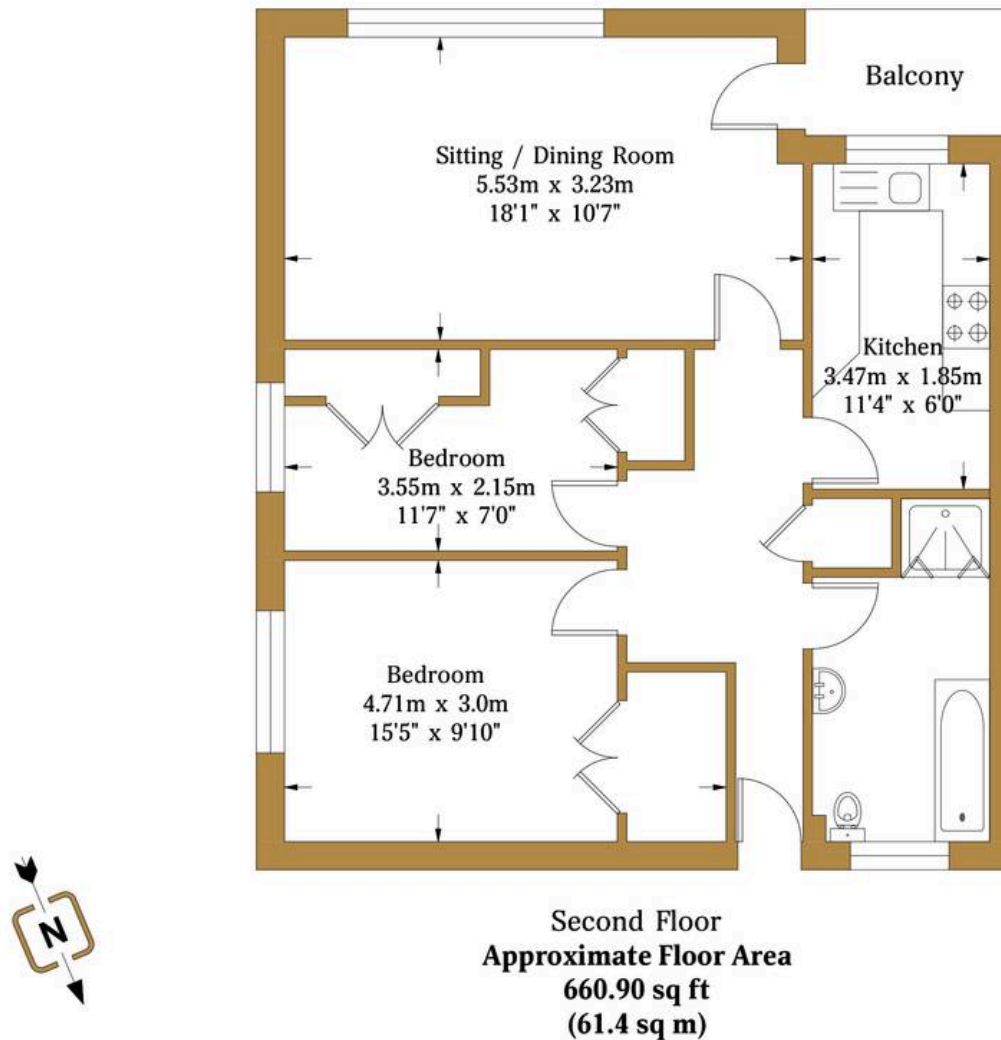
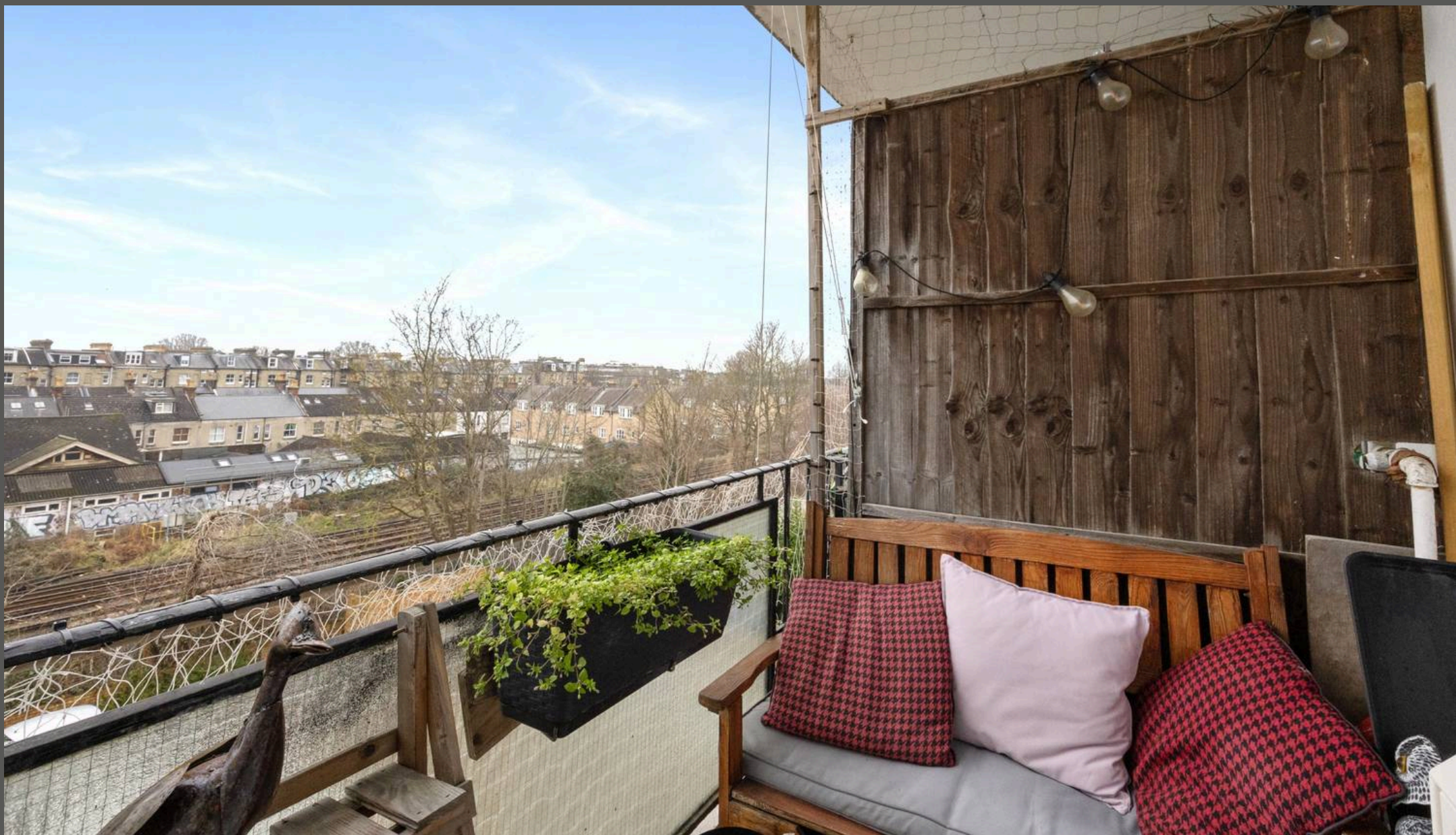


Illustration for identification purposed only, measurements are approximate, not to scale.

© hwestateagents



HW Estate Agents

HW Estate Agents, 80 Goldstone Villas, Hove - BN3 3RU

01273 359000 · hove@hwestateagents.co.uk · www.hwestateagents.co.uk

HW

ESTATE AGENTS