



Deansfield, Cricklade – SN6 6BP

Wiltshire

Guide Price **£500,000**

mcfarlane
property.com

Deansfield

Cricklade

A rare opportunity to buy a sought-after property in a Cul-De-Sac setting with extensive plot. Boasting a conservatory, double garage, and mature gardens. 4 bedrooms, ensuite, and modern family bathroom. Enquire now.

- Rare Opportunity
- Expansive Corner Plot with Mature Gardens
- Generous Flexible Accommodation
- Expansive Conservatory
- Kitchen Breakfast Room + Utility
- Generous Plot with Sweeping Driveway
- DOUBLE GARAGE
- Solar Panels



Deansfield

Cricklade - Wiltshire

Cricklade is a former market town and known as the first town on the Thames. There is a bustling High Street with a variety of amenities and eateries. The larger Towns of Cirencester & Swindon are within ease of access and the adjacent A419. Cricklade is well regarded for the north water meadow an the snake headed fritillaries that bloom annually, this is now a SSSI and NNR.

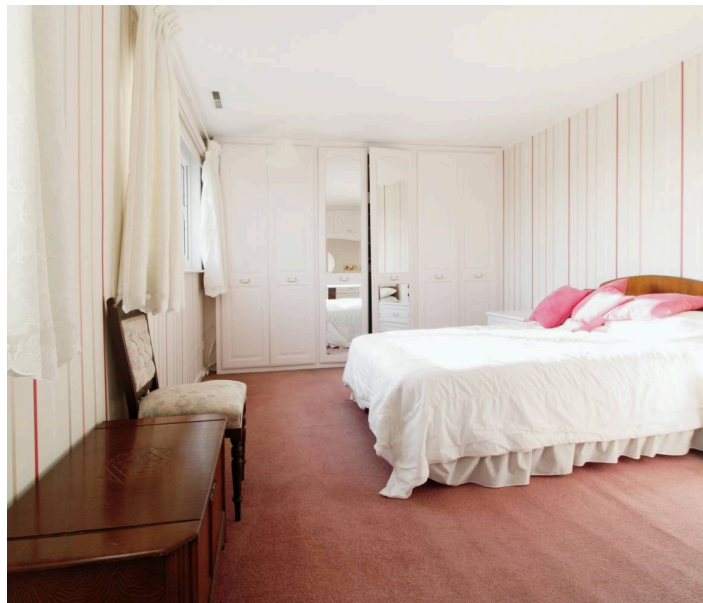
Council Tax band: E

Tenure: Freehold

EPC Energy Efficiency Rating: D

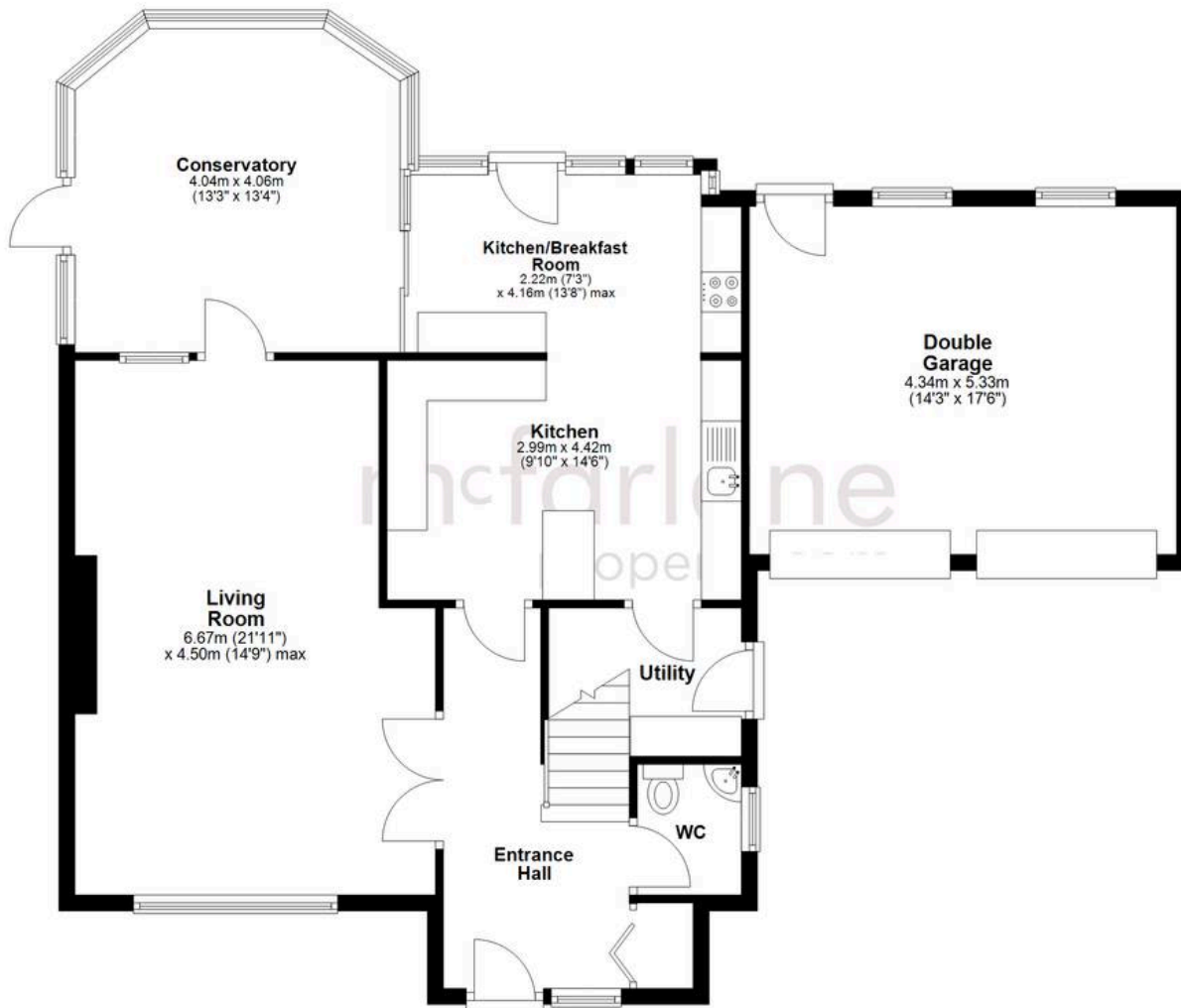
EPC Environmental Impact Rating: E

mcfarlane
property.com



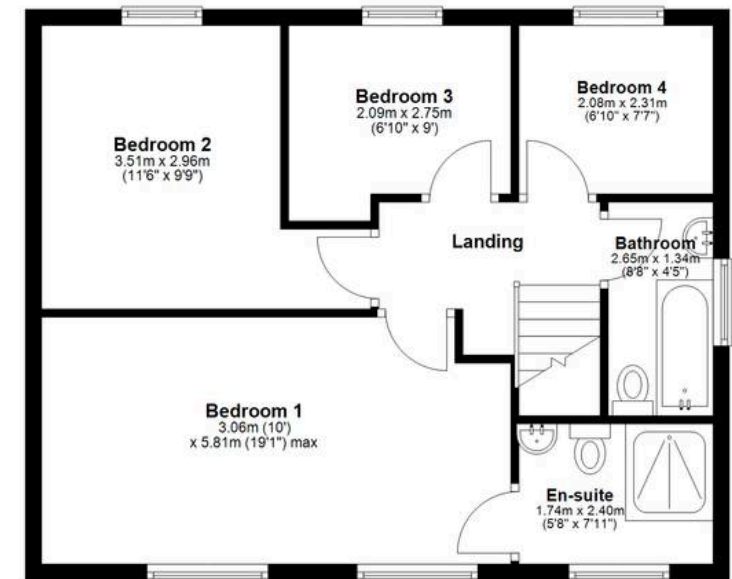
Ground Floor

Approx. 108.5 sq. metres (1168.2 sq. feet)



First Floor

Approx. 55.6 sq. metres (598.7 sq. feet)



Total area: approx. 164.1 sq. metres (1766.9 sq. feet)

Agents Note: Whilst every care has been taken to prepare these sales particulars, they are for guidance purposes only. All measurements are approximate and for general guidance purposes only and whilst every care has been taken to ensure their accuracy, they should not be relied upon and potential buyers are advised to recheck the measurements.