



Williams Way, Longwick - HP27 9RP

Offers Over £650,000

TIM RUSS
& Company



Williams Way

Longwick

- Four Bedroom Detached Family Home
- Village Cul-De-Sac Location
- Spacious Family Living Accommodation
- Bedroom One with Dressing Room & En Suite
- Ground Floor Bedroom with Shower Room
- Large Kitchen/Breakfast Room
- Living Room/Dining Room
- Conservatory
- Family Bathroom & Cloakroom
- Driveway Parking



Williams Way

Longwick

An impressive detached family home situated in a popular village cul-de-sac location. Boasting spacious and versatile living space which includes a useful ground floor room which is currently configured as a bedroom/annexe with en-suite but could be adapted to suit a whole range of uses.

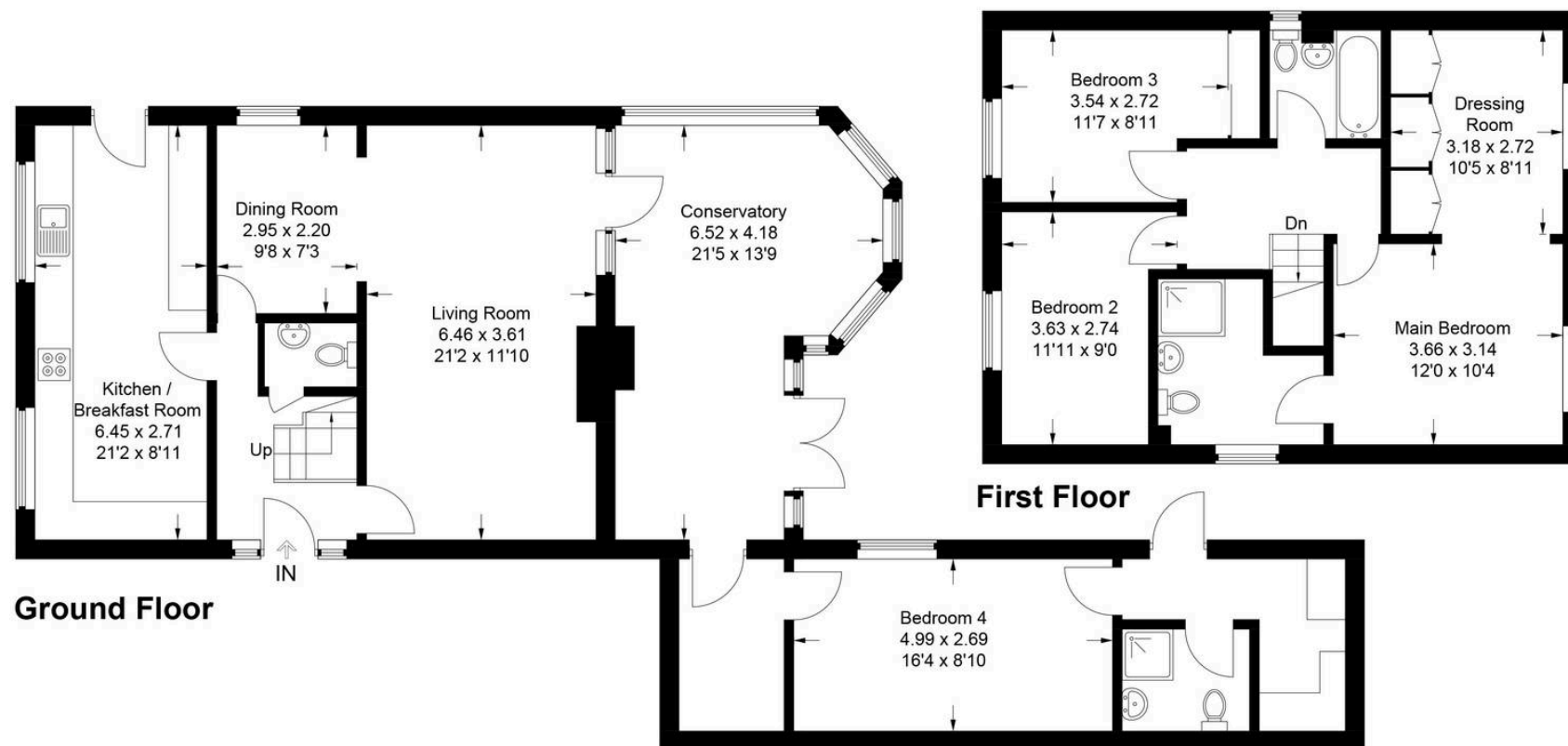
The accommodation measures almost 1800sqft and further comprises a large kitchen/breakfast room, cloakroom and living room open into the dining room. The conservatory is a nice feature with french doors to the garden and access to the previously mentioned bedroom/annexe. To the first floor can be found the family bathroom, the main bedroom is particularly impressive as it benefits from a large en-suite and dressing room. The dressing room was previously another bedroom and offers scope to reinstate should the buyer choose. There are two further bedrooms on the first floor. Outside there is driveway parking for several vehicles. Council Tax band: F

Tenure: Freehold

EPC Energy Efficiency Rating: D

EPC Environmental Impact Rating: E





Approximate Gross Internal Area
166 sq m / 1,789 sq ft



This plan is for layout guidance only. Not drawn to scale unless stated. Windows and door openings are approximate. Whilst every care is taken in the preparation of this plan, please check all dimensions, shapes and compass bearings before making any decisions reliant upon them.

© CJ Property Marketing Ltd Produced for Tim Russ & Company

Tim Russ and Company

Tim Russ Ltd, 1 High Street, Princes Risborough - HP27 0AE

01844 275522 • p.risborough@timruss.co.uk • timruss.co.uk

