



REDESDALE STREET, CHELSEA, SW3

R&P



## REDESDALE STREET, CHELSEA, SW3

A charming four bedroom Victorian freehold townhouse located moments away from Kings Road and Burton Court. The property is immaculately presented and arranged over four floors only, with excellent entertaining space and well balanced bedroom accommodation.

The house is situated south of the Kings Road, close to the corner of Tedworth Square, with Burton Court to the East and Royal Hospital gardens to the south. Physic Garden and Battersea Park are a short walk away with Sloane Square being the nearest Underground station.

Entrance Hall • Double Reception Room • Piano/Study Area with a balcony • Large Kitchen/ Dining Room • Principal Bedroom with Dressing area and En Suite Bathroom • 2 Further Bedrooms one with an En Suite Bathroom • Study/Bedroom 4 • Family Bathroom • Utility Room • 2 Guest WC's • Patio Garden • South Facing Roof Terrace • Vault Storage • EPC Rating D

### TERMS

**Tenure:** Freehold

**Local Authority:** Royal Borough of Kensington & Chelsea

**Price:** £4,350,000 Subject to Contract







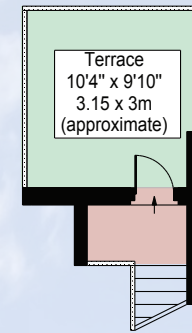
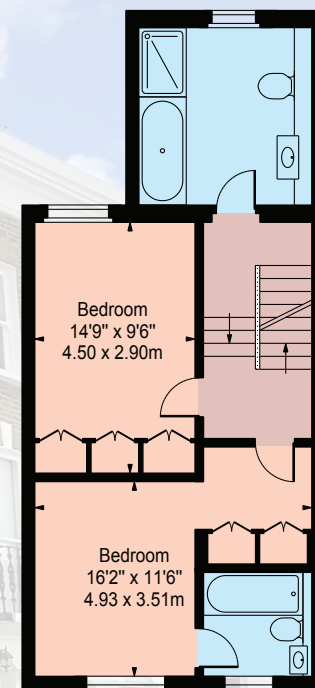
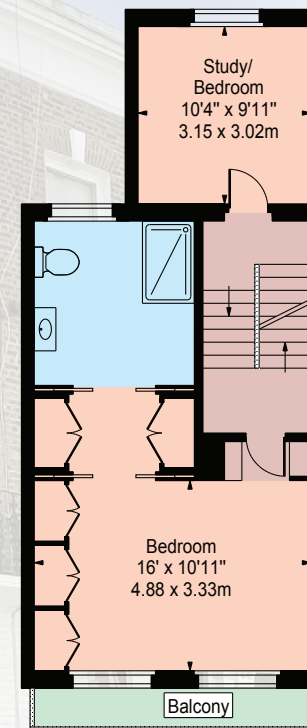
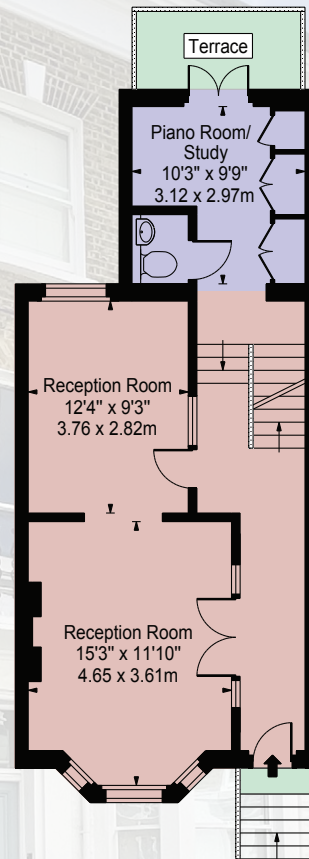
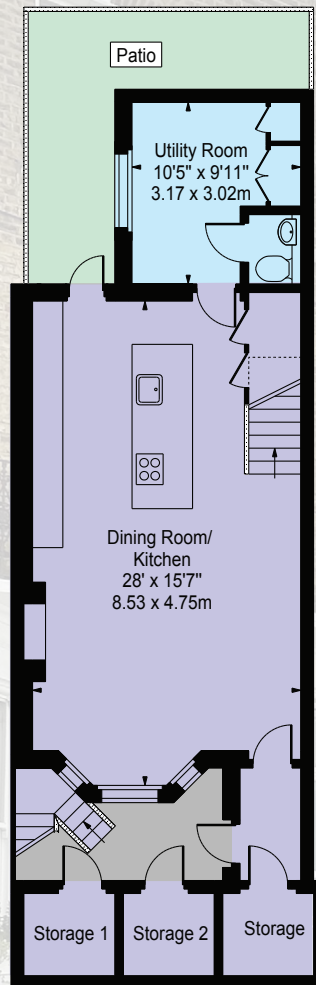


## GROSS INTERNAL AREA

2,223 sq ft (206.52 sq m)

(Excluding Storage 1 & Storage 2)

For identification purposes only.



# Rose&Partners

PROPERTY SPECIALISTS

020 3838 8366

info@roseandpartners.co.uk  
roseandpartners.co.uk

MICHELIN HOUSE, 81 FULHAM RD, LONDON SW3 6RD

### R&P Disclaimer

Important Notice: This brochure, the descriptions and measurements herein do not constitute representation and whilst every effort has been made to ensure accuracy, this cannot be guaranteed, nor do they form part of any contract. Please note that we have not carried out a detailed survey nor tested the services, appliances or any specific fittings. Brochure prepared February 2025