



114 Mill Lane, Portslade

Guide Price £575,000

**MANSELL
McTAGGART**
Trusted since 1947

114 Mill Lane

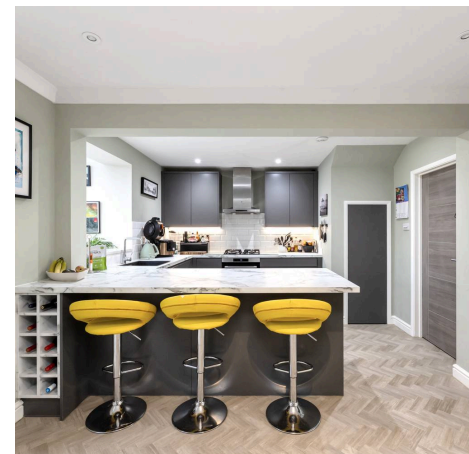
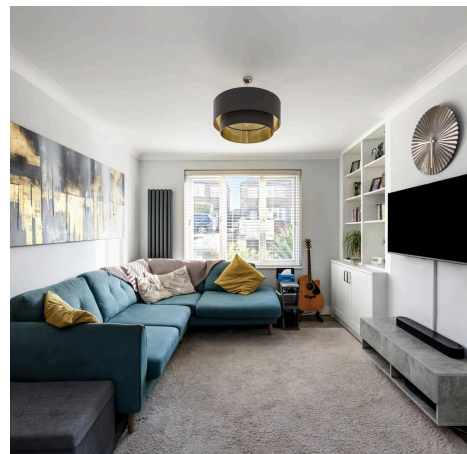
Portslade, Brighton

Located in Portslade, this well presented three-bedroom semi-detached home offers open-plan living, three bedrooms, a large garden, off-street parking

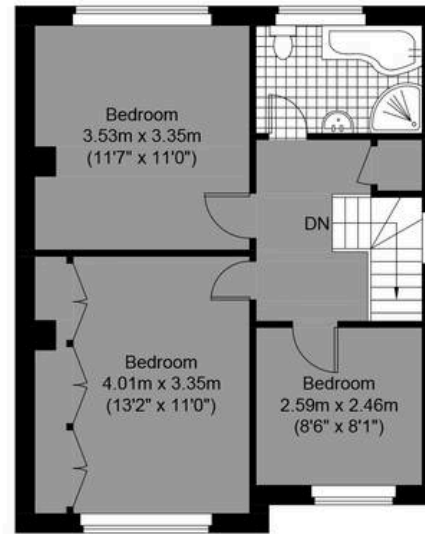
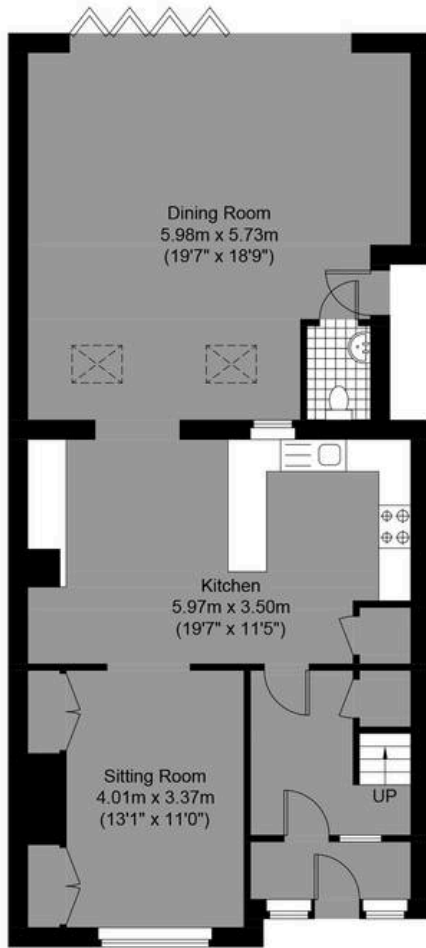
Council Tax band: C

Tenure: Freehold

- Semi Detached
- Three Bedrooms
- Extended Open Plan Living
- Modern Kitchen
- Large Private Garden
- Exclusive To Mansell McTaggart
- Excellent Amenities & Transport Links
- Opportunity to expand further (STPP)
- Well Presented Throughout



Approximate Gross Internal Area= 123.17 sq m / 1325.78 sq ft



**MANSELL
McTAGGART**
— Trusted since 1947 —



Mill Lane

Ground Floor
Approximate Floor Area
843.78 sq ft (78.39 sq m)

First Floor
Approximate Floor Area
482.0 sq ft (44.78 sq m)

Illustration for identification purposes only, measurements are approximate, not to scale.

© Mansell McTaggart



Mansell McTaggart Hove

170 Church Road, Hove - BN3 2DJ

01273 044929

hove@mansellmctaggart.co.uk

www.mansellmctaggart.co.uk/branch/hove/

