



Reeves Court, Canterbury Gardens

Salford



£130,000



# Reeves Court

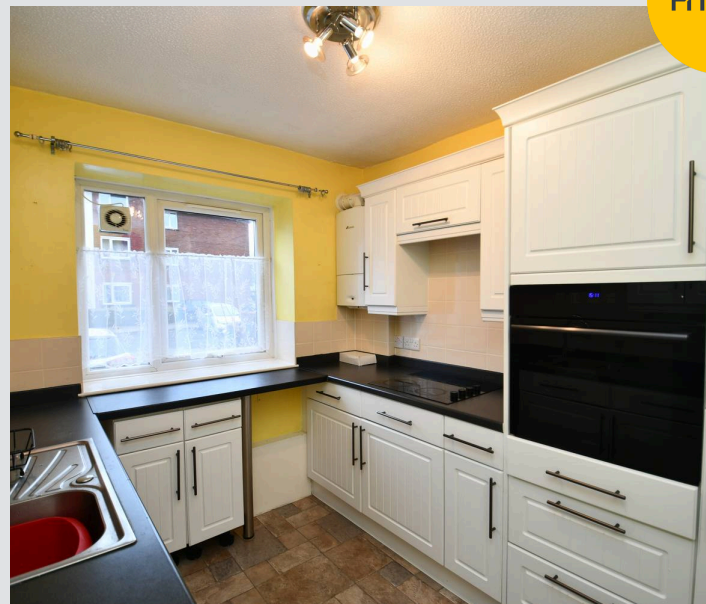
Salford

**\*\*Ground Floor, Two Bedroom Apartment Located on the Popular Canterbury Gardens Development, Just a Stone's Throw from Ladywell Tram Stop!\*\***

Council Tax band: A

Tenure: Leasehold

- Fantastic Two Bedroom GROUND FLOOR Apartment
- Located on the Popular Canterbury Gardens Development
- Just a Stone's Throw from Ladywell Tram Stop, which Provides Direct Access into Salford Quays, Media City and Manchester City Centre
- Spacious Lounge Diner
- Two Double Bedrooms
- Modern Fitted Kitchen
- Modern Three-Piece Shower Room
- Within Walking Distance of Eccles Town Centre, West One Retail Park and Salford Royal Hospital
- Viewing is Highly Recommended!



HILLS



**Entrance Hallway**

Dimensions: 18' 1" x 3' 1" (5.51m x 0.94m). Complete with a ceiling light point, wall mounted radiator and carpet flooring.

**Lounge**

Dimensions: 13' 9" x 12' 0" (4.19m x 3.65m). Complete with a ceiling light point and two wall mounted radiators. Fitted with carpet flooring

**Kitchen**

Dimensions: 9' 4" x 7' 9" (2.84m x 2.36m). Featuring complementary fitted units with integral hob and oven. Complete with a ceiling light point, double glazed window and cushioned flooring.

**Bathroom**

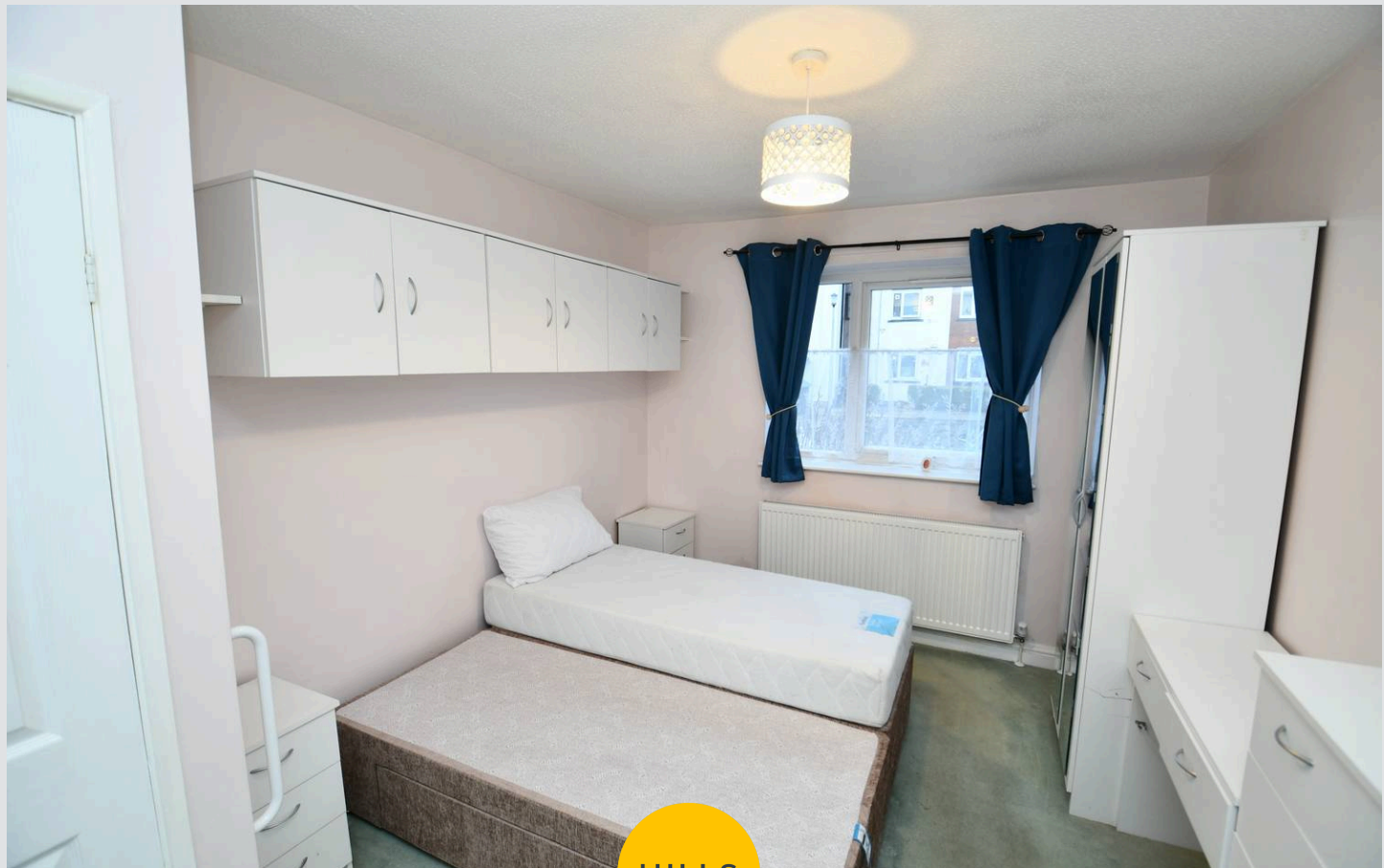
Dimensions: 6' 9" x 6' 9" (2.06m x 2.06m). Featuring a three piece suite including shower, hand wash basin and W.C. Complete with a ceiling light point, double glazed window and tiled flooring.

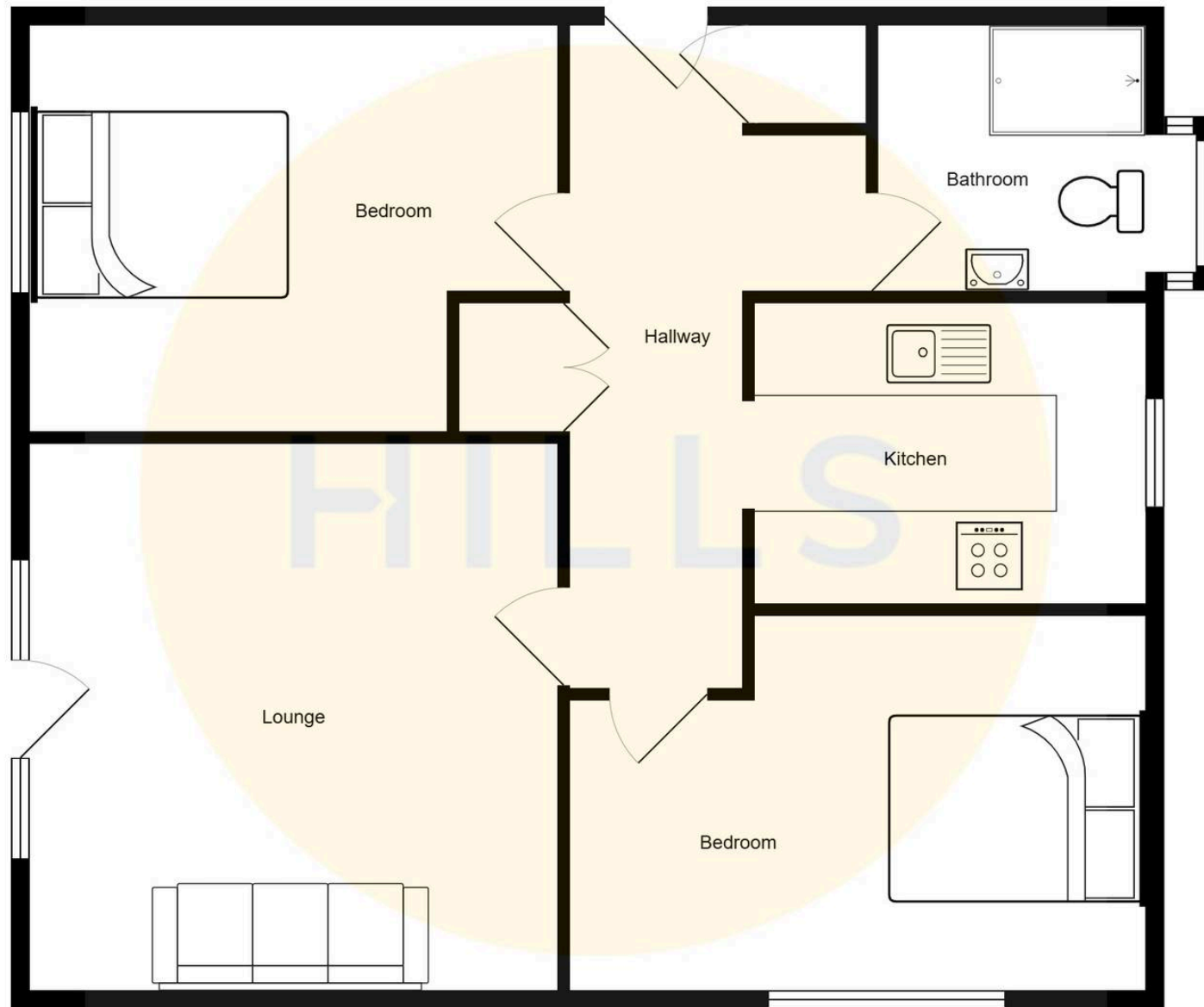
**Bedroom One**

Dimensions: 12' 9" x 9' 5" (3.88m x 2.87m). Complete with a ceiling light point, double glazed window and wall mounted radiator. Fitted with carpet flooring.

**Bedroom Two**

Dimensions: 11' 5" x 10' 9" (3.48m x 3.27m). Complete with a ceiling light point, double glazed window and wall mounted radiator. Fitted with carpet flooring.









## Hills | Salfords Estate Agent

Hills Residential, Sentinel House Albert Street – M30 0SS

0161 707 4900

[sales@hills.agency](mailto:sales@hills.agency)

[www.hills.agency/](http://www.hills.agency/)



THE PROPERTY MISDESCRIPTIONS ACT 1991 The Agent has not tested any apparatus, equipment, fixtures and fittings or services and so cannot verify that they are in working order or fit for the purpose. A Buyer is advised to obtain verification from their Solicitor or Surveyor. References to the Tenure of a Property are based on information supplied by the Seller. The Agent has not had sight of the title documents. A Buyer is advised to obtain verification from their Solicitor. You are advised to check the availability of this property before travelling any distance to view. Every effort and precaution has been made to ensure these particulars are correct and not misleading but their accuracy is not guaranteed nor do they form part of any contract. If there is any point which is of particular importance to you, please contact us and we will provide any information you require. This is advisable, particularly if you intend to travel some distance to view the property. The mention of any appliances and services within these details does not imply that they are in full and efficient working order. These particulars are in draft form awaiting Vendors confirmation of their accuracy. These details must therefore be taken as a guide only.