



41 Bury Hill, Woodbridge

Offers Over **£300,000**





41 Bury Hill

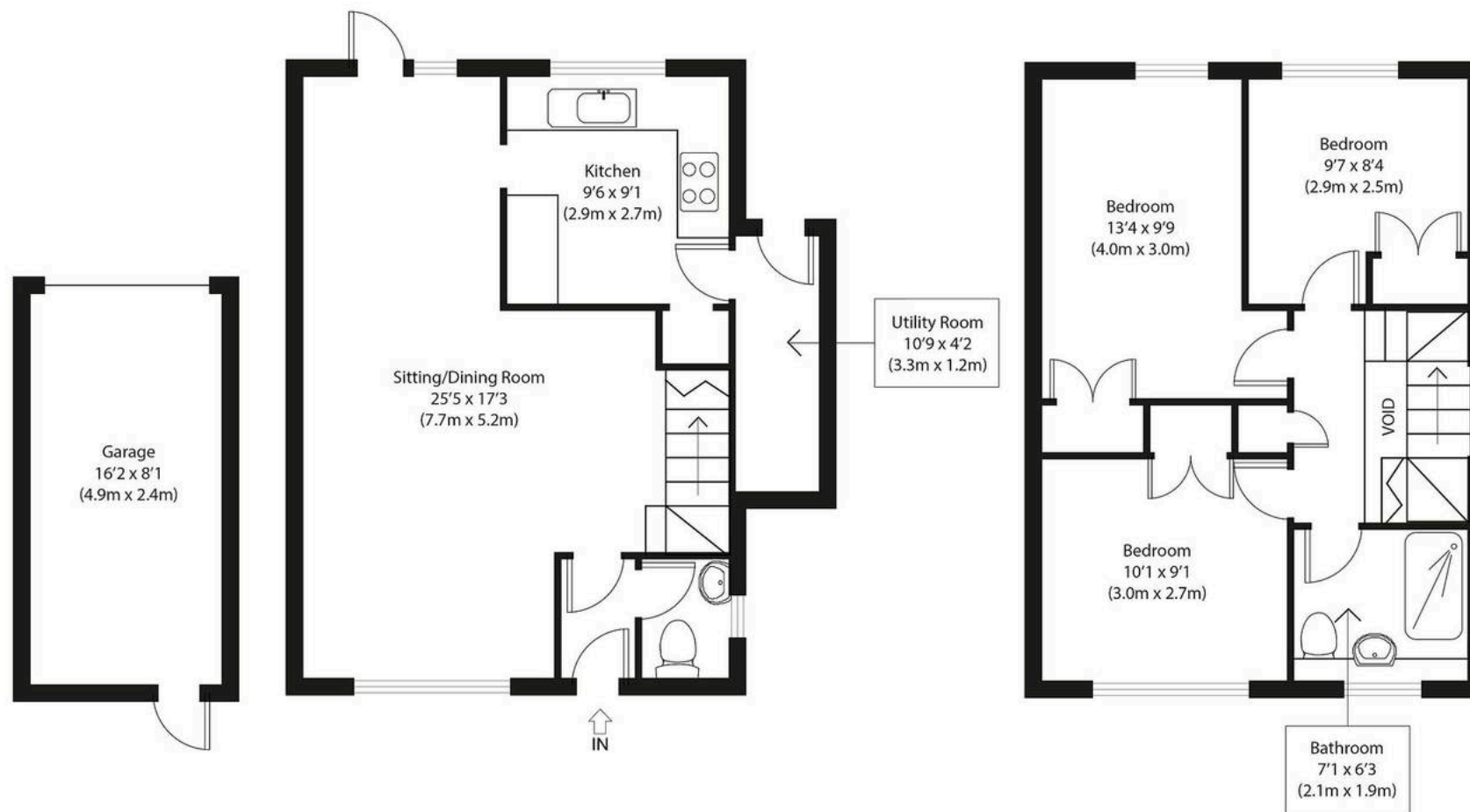
Woodbridge, Woodbridge

Potter's are privileged to offer to the sales market this three bedroom semi-detached house, situated in a sought after location of Woodbridge. Sold with no onward chain. Council Tax band: C

Tenure: Freehold







Ground Floor

First Floor

Approximate Gross Internal Area
 Main House 935 sq ft (87 sq m)
 Garage 130 sq ft (12 sq m)
 Total 1065 sq ft (99 sq m)

Disclaimer: Floorplan measurements are approximate and are for illustrative purposes only. While we do not doubt the floor plan accuracy and completeness, you or your advisors should conduct a careful, independent investigation of the property in respect of monetary valuation. copyright www.phototahausgroup.co.uk



Potters Estate Agents

Potters Estate Agents, 6 Market Hill - IP12 4LU

01394 447487 • enquiries@pottersestateagents.com • www.pottersestateagents.com/