



## 7 Tudor Court Prince Of Wales Mansions York Place, Harrogate

Harrogate

Guide Price £352,000



MYRINGS





## 7 Tudor Court Prince Of Wales Mansions York Place

Harrogate, Harrogate

NO CHAIN - VIEWS OVER THE STRAY  
PARKLAND - GARAGE AND PARKING - OVER  
1,200 SQ FT - LIFT ACCESS - SECURE ENTRY  
SYSTEM - TOWN CENTRE LOCATION - TRAIN  
STATION 6 MINUTES WALK - WAITROSE  
SUPERMARKET 200 YARDS

Council Tax band: E

Tenure: Leasehold

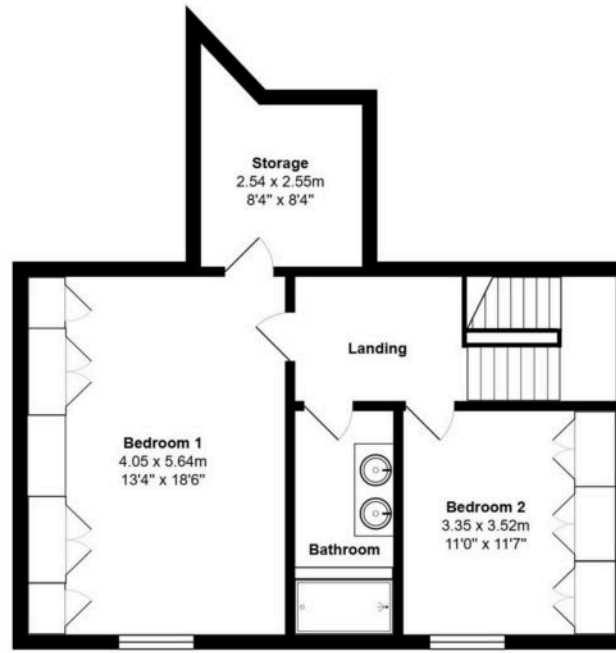
- VIEWS OVER THE STRAY PARKLAND
- GARAGE AND PARKING
- OVER 1,200 SQ FT
- LIFT ACCESS
- SECURE ENTRY SYSTEM
- TOWN CENTRE LOCATION
- TRAIN STATION 6 MINUTES WALK
- WAITROSE SUPERMARKET 200 YARDS



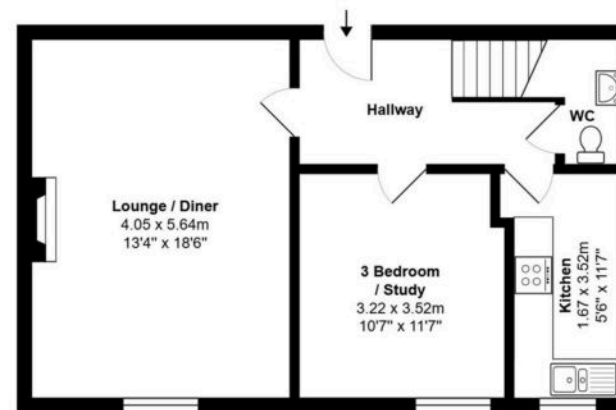
MYRINGS







**Fourth Floor**  
Area: 59.6 m<sup>2</sup> ... 641 ft<sup>2</sup>



**Third Floor**  
Area: 52.2 m<sup>2</sup> ... 562 ft<sup>2</sup>



Total Area: 111.8 m<sup>2</sup> ... 1204 ft<sup>2</sup>

All measurements are approximate and for display purposes only.









## Myrings Estate Agents

Myrings Estate Agents Ltd, 10 Princes Square - HG1 1LX

01423

566400

▪ [enquiries@myringsestateagents.com](mailto:enquiries@myringsestateagents.com) ▪ <http://myringsestateagents.com/>

