



Bartlams.

8 Rosemary Road, Himley - DY3 4AS
£385,000



8 Rosemary Road

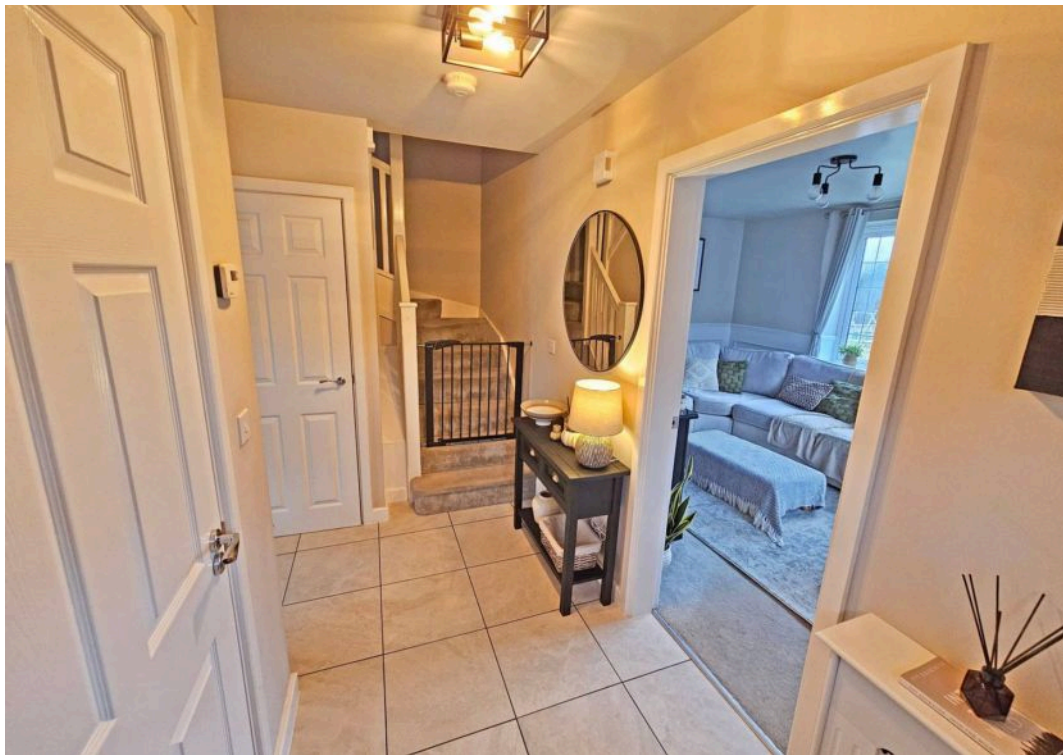
Himley, Dudley

Wonderfully positioned three-bedroom detached property built by Bloor Homes occupying a prominent corner plot within this sought after new-build development on the outskirts of Wombourne, handy for all types of amenities. Along with this homes immaculate condition, it is also accompanied by picturesque views. As you enter, you are immediately welcomed by a spacious entrance hall with a downstairs W.C, beautifully light living room with calming views and open plan kitchen diner. On the first floor are three well proportioned bedrooms with the principal room benefitting an en-suite, family bathroom and a fantastic landing space with storage. The exterior hosts many perks such as a spacious artificial lawned garden including paved patio area, private driveway and a generous detached garage. Interior viewing is highly recommended, call our local team now! Freehold. Council Tax Band - E. EPC - B.



- WONDERFULLY POSITIONED DETACHED HOME
- LARGE DETACHED GARAGE TO THE SIDE
- OFF ROAD PARKING
- THREE WELL PROPORTIONED BEDROOMS
- SPECTACULAR VIEWS
- EASILY MAINTAINED REAR GARDEN
- IMMACULATLY PRESENTED
- FREEHOLD. COUNCIL TAX BAND - E. EPC - B

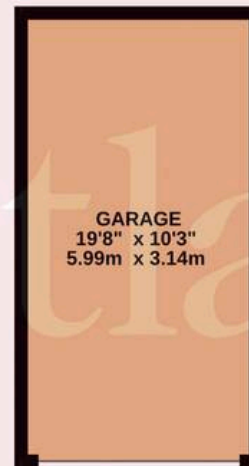
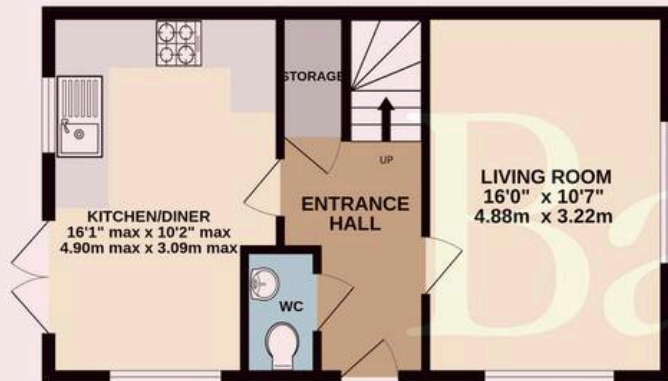
B.



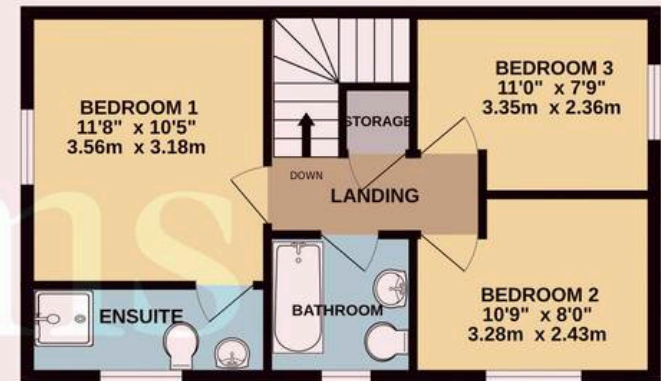




GROUND FLOOR



1ST FLOOR



Whilst every attempt has been made to ensure the accuracy of the floorplan contained here, measurements of doors, windows, rooms and any other items are approximate and no responsibility is taken for any error, omission or mis-statement. This plan is for illustrative purposes only and should be used as such by any prospective purchaser. The services, systems and appliances shown have not been tested and no guarantee as to their operability or efficiency can be given.

Made with Metropix ©2023

Bartlams

Bartlams Ltd, The House On The Green High Street - WV5 9DP

01902894141

wombourne@bartlams.co.uk

www.bartlams.co.uk/

NOTICE: These particulars, although believed to be correct, do not constitute any part of an offer or contract. All statements contained in these particulars as to this property are made without responsibility and are not to be relied upon as statements or representations of warranty whatsoever in relation to property. Any intending purchaser must satisfy themselves by inspection or otherwise as to the correctness each of the statements contained in these particulars. All measurements are approximate and for illustrative purposes only. Photographs are produced for general information and it must not be inferred that any item shown is included in the sale. DISCLOSURE: As a professional Estate Agency our clients employ us to look after their best interests. This includes providing them with full details of offers made to purchase their property. To ensure our obligations to our clients are met we need to check the status of all potential purchasers. If you make an offer on this property we will ask a member of The Finance Family to contact you to verify your status. They are a leading firm of Independent Financial Advisers and Mortgage Brokers. Should they transact any business resulting from our introduction then we may receive a commission.

