

12

LITTLE
PORTLAND STREET
LONDON W1

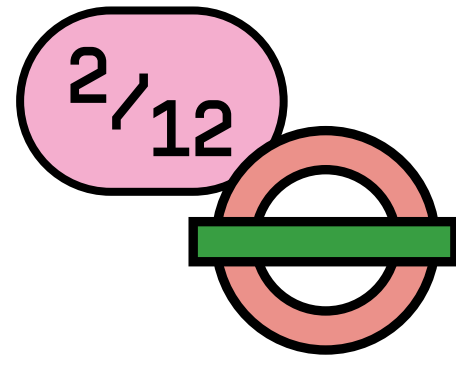
2,659 sq. ft. - 16,557 sq. ft. fully managed office space

THE CROWN
 ESTATE

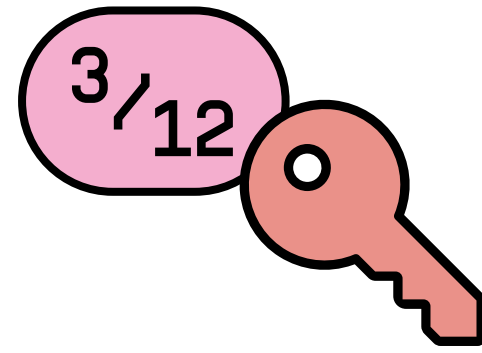




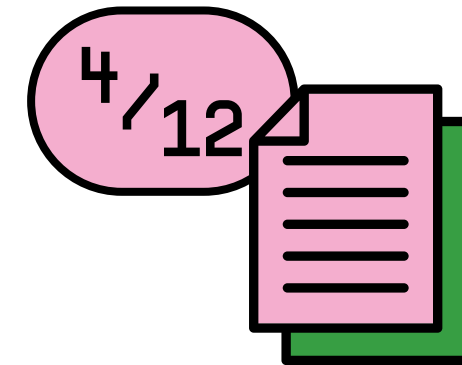
12 Little Portland Street, W1



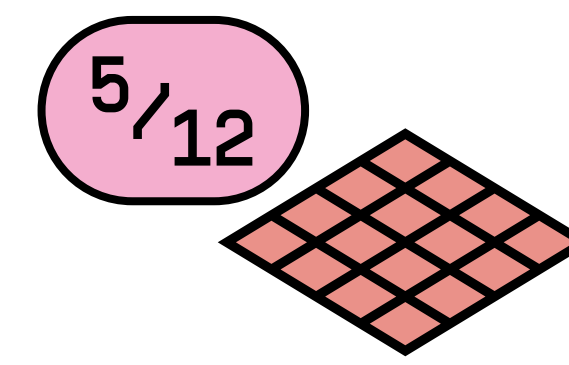
Connectivity
all around



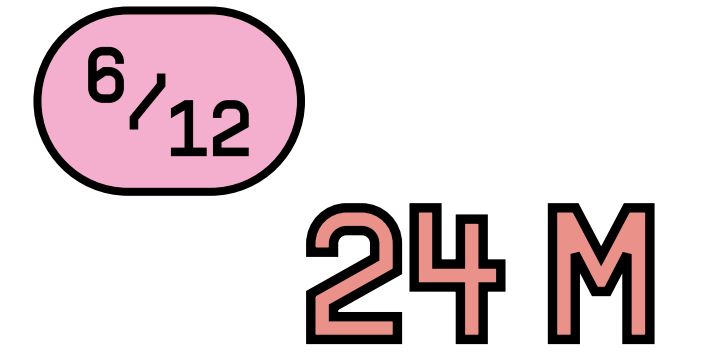
All inclusive rent



Fully managed

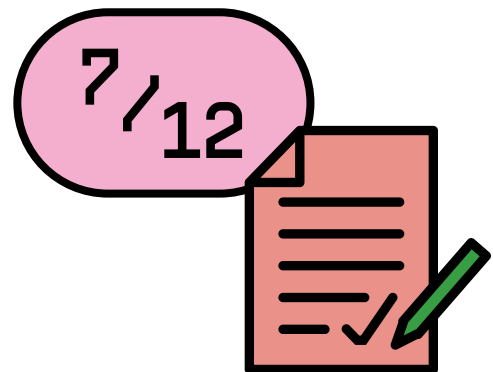


Floor sizes
2,659 sq. ft. - 3,574 sq. ft.

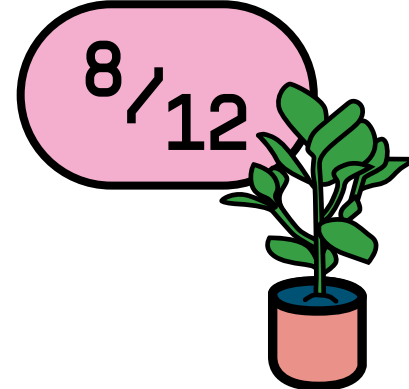


Minimum lease term
of 24 months

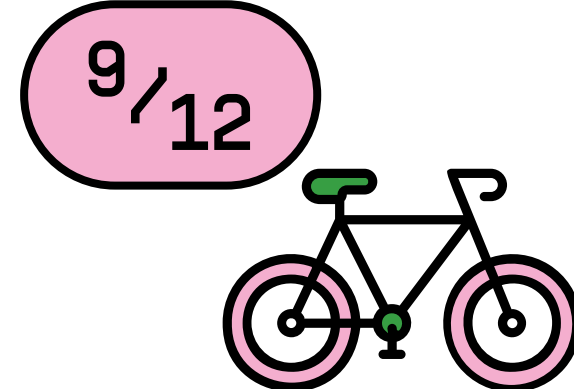
12 LITTLE HIGHLIGHTS



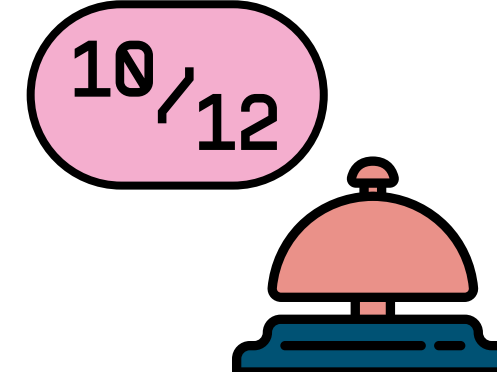
Delivered by
The Crown Estate



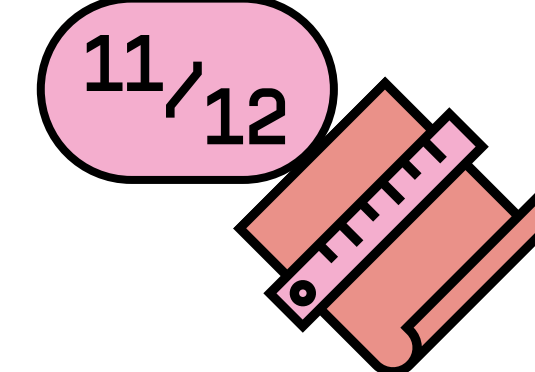
Communal roof
terrace



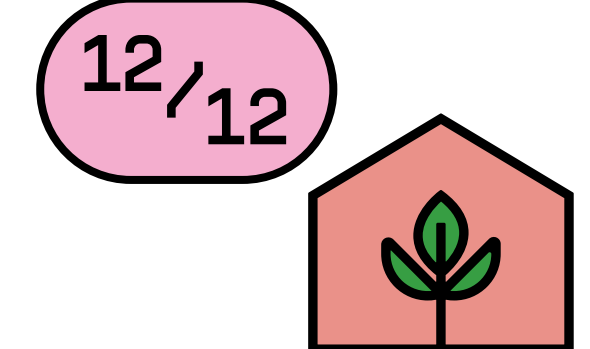
Bike racks & showers



Manned reception



Architecturally
designed interiors



BREEAM rating "Very Good"



AN ELEGANT OFFICE BUILDING

12 Little Portland Street offers over 17,000 sq. ft. of newly refurbished and fully fitted office space, nestled between stylish Fitzrovia and bustling Soho.

A contemporary, bright reception welcomes you through to the newly refurbished office accommodation, arranged over six floors and fully fitted to the highest of standards, offering space for immediate occupation.

Floor	sq. ft.	sq. m.
Six	2,659	247
Five	3,283	305
Four	3,552	330
Three	3,552	330
Two	3,531	328
One	Let	
Total	16,577	1,540

Net Internal Areas, subject to verification



Floor 2 open plan workstations



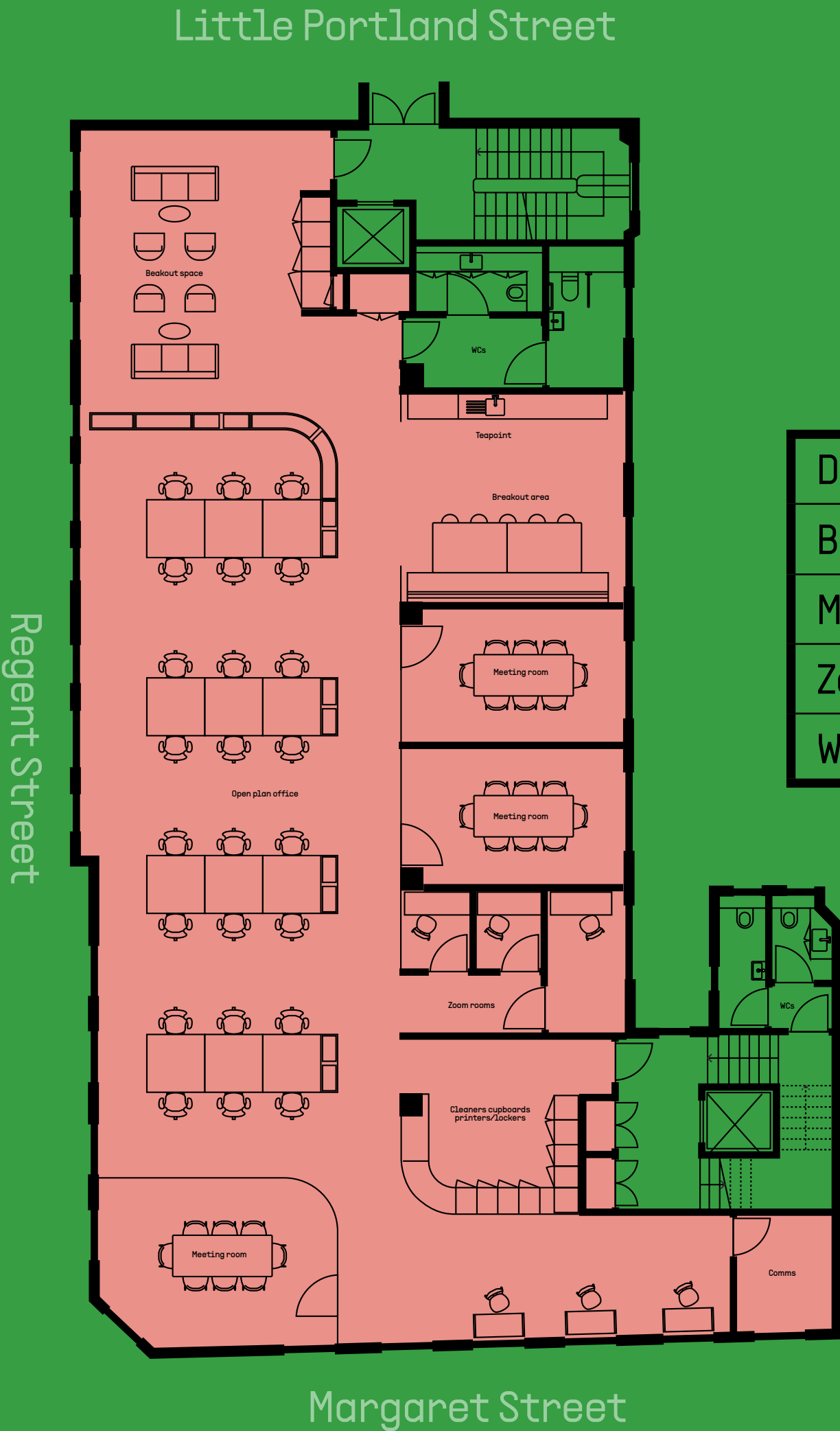




Floor 4 workstations

2nd Floor

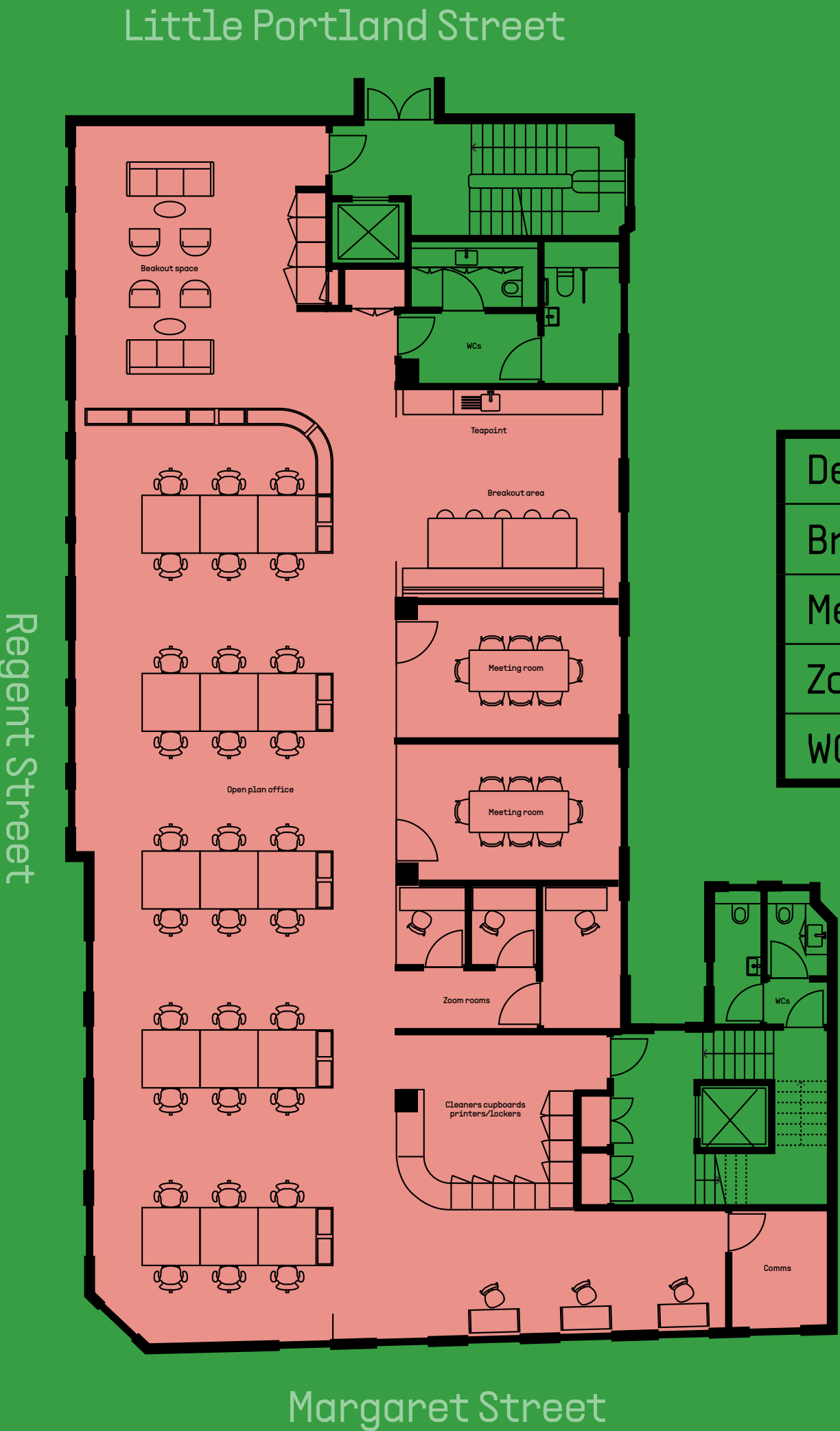
3,541 sq. ft. | 329 sq. m.



Desks	24
Breakout Area	02
Meeting Rooms	03
Zoom Rooms	03
WC	04

2nd Floor (Alt)

3,541 sq. ft. | 329 sq. m.

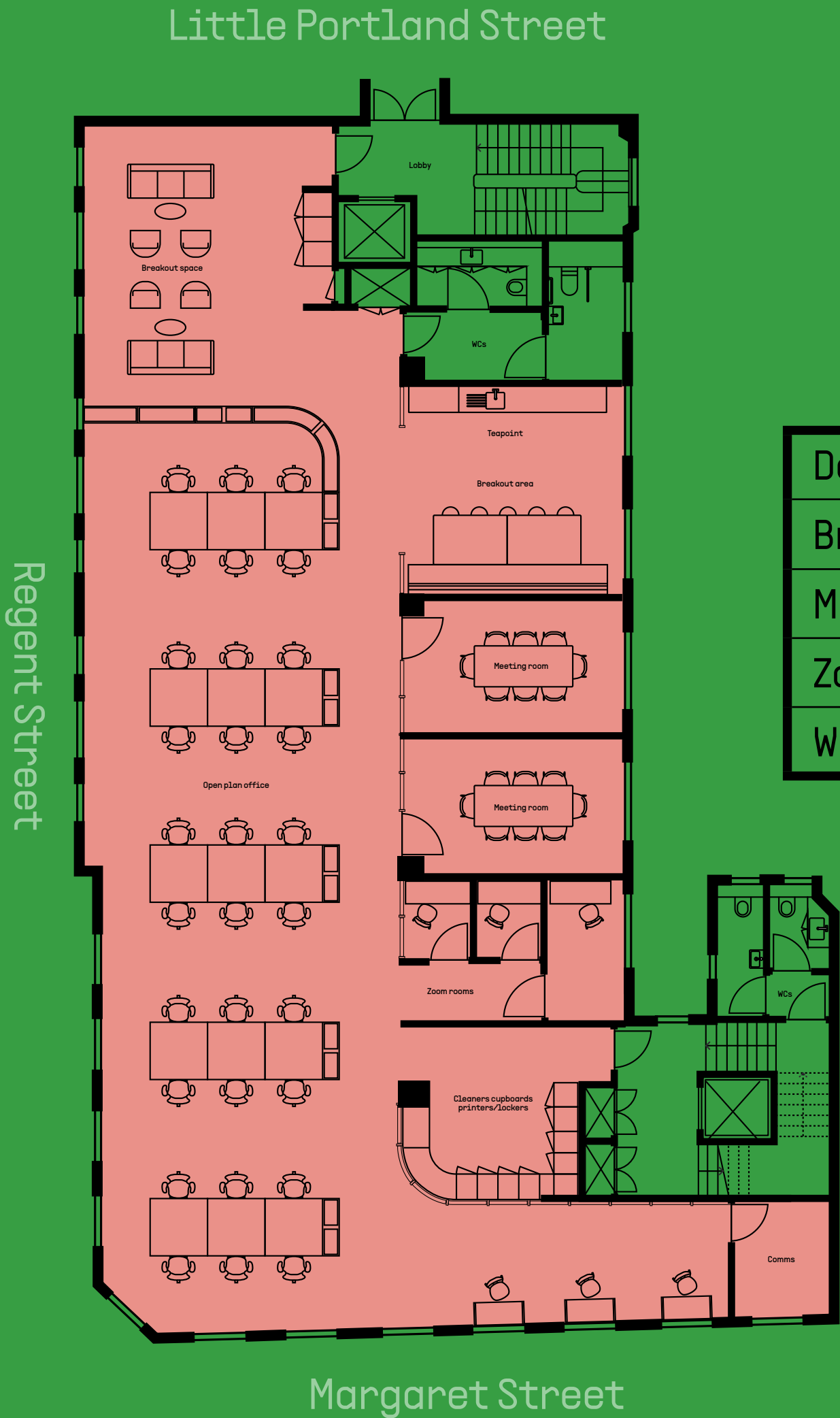


Desks	30
Breakout Area	02
Meeting Rooms	02
Zoom Rooms	03
WC	04



3rd Floor

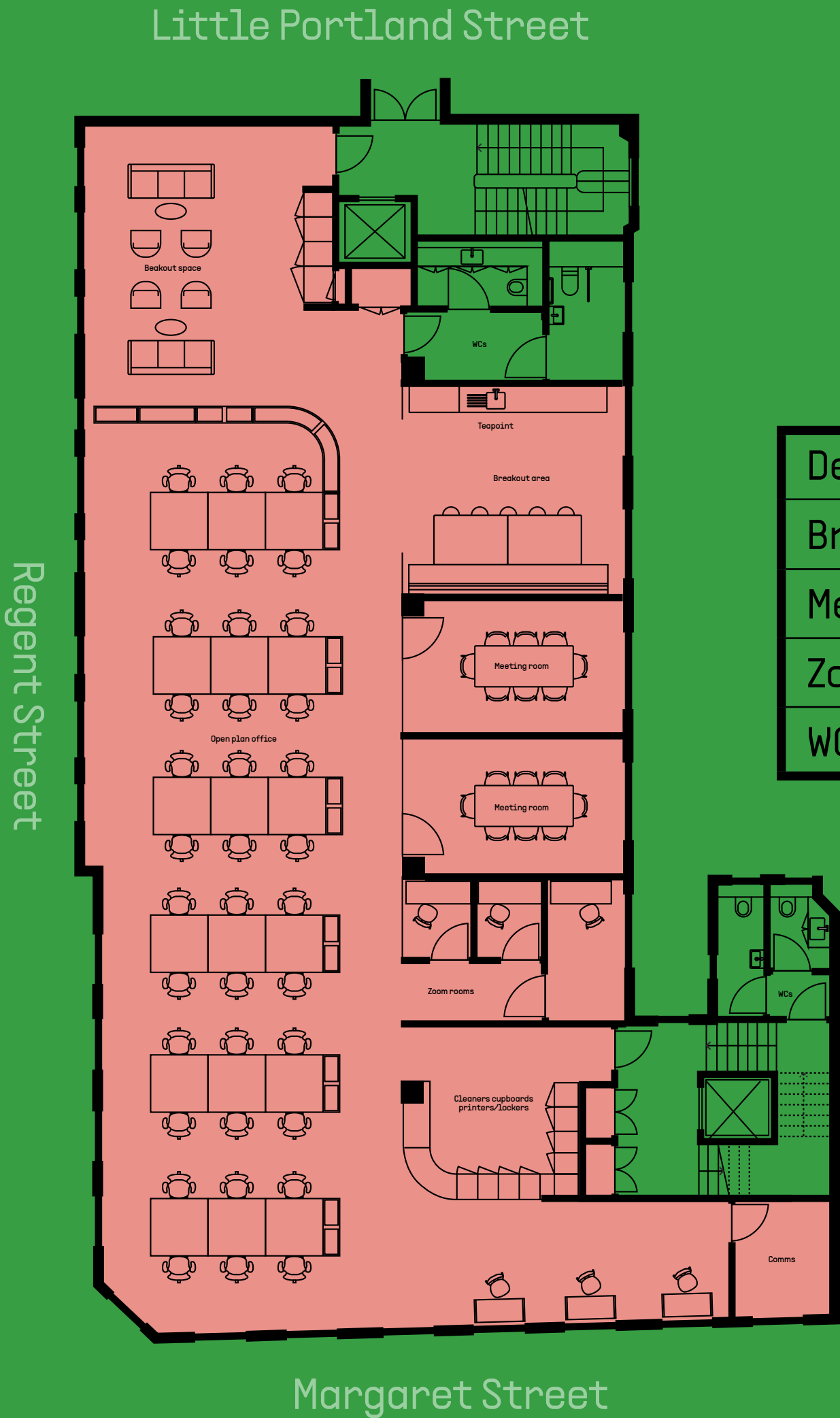
3,574 sq. ft. | 332 sq. m.



Desks	30
Breakout Area	02
Meeting Rooms	02
Zoom Rooms	03
WC	04

3rd Floor (Alt)

3,574 sq. ft. | 332 sq. m.



Desks	36
Breakout Area	02
Meeting Rooms	02
Zoom Rooms	03
WC	04

4th Floor

3,563 sq. ft. | 331 sq. m.

Little Portland Street

Regent Street

Margaret Street

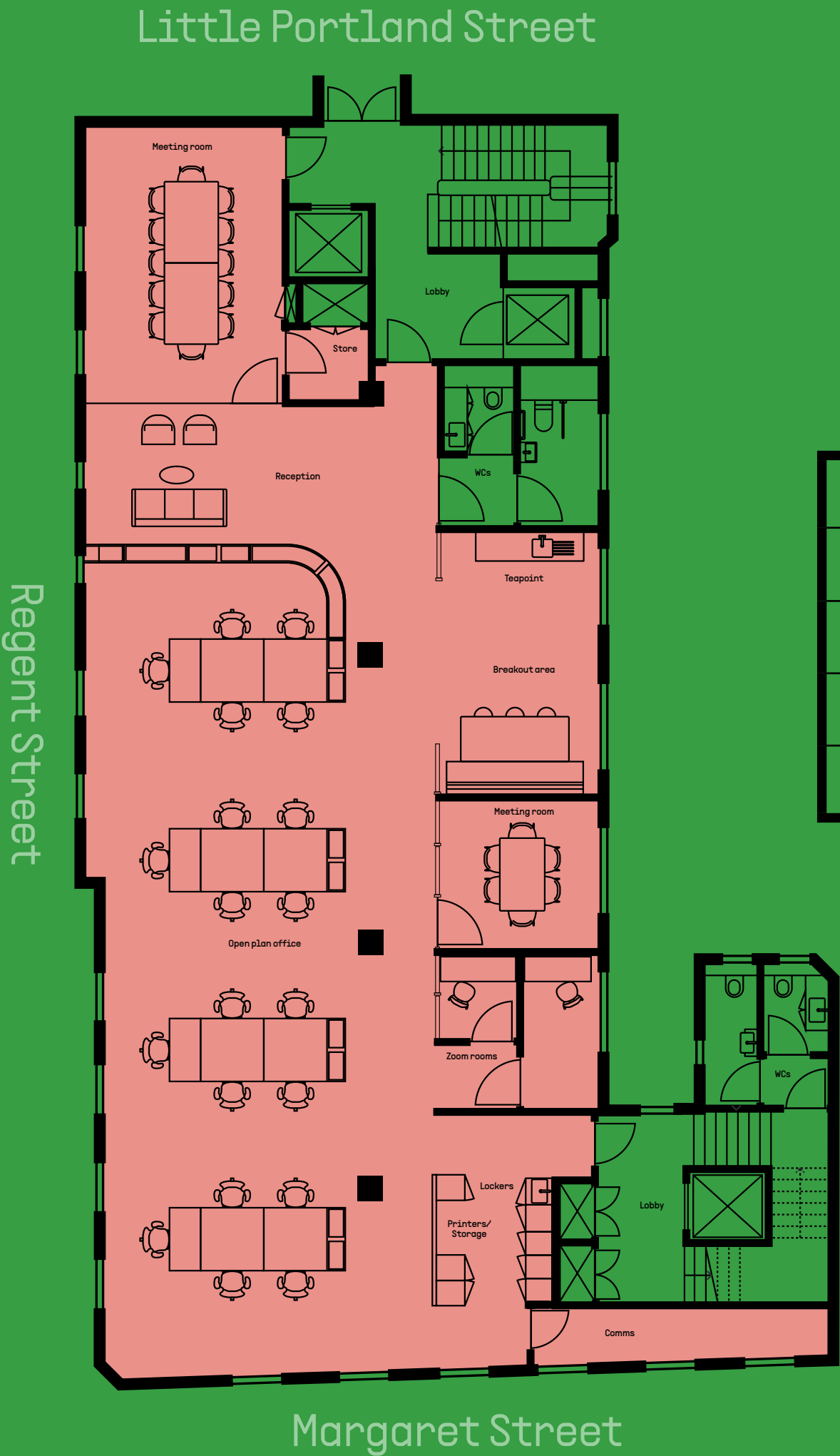


Desks	30
Breakout Area	02
Meeting Rooms	02
Zoom Rooms	03
WC	04



6th Floor

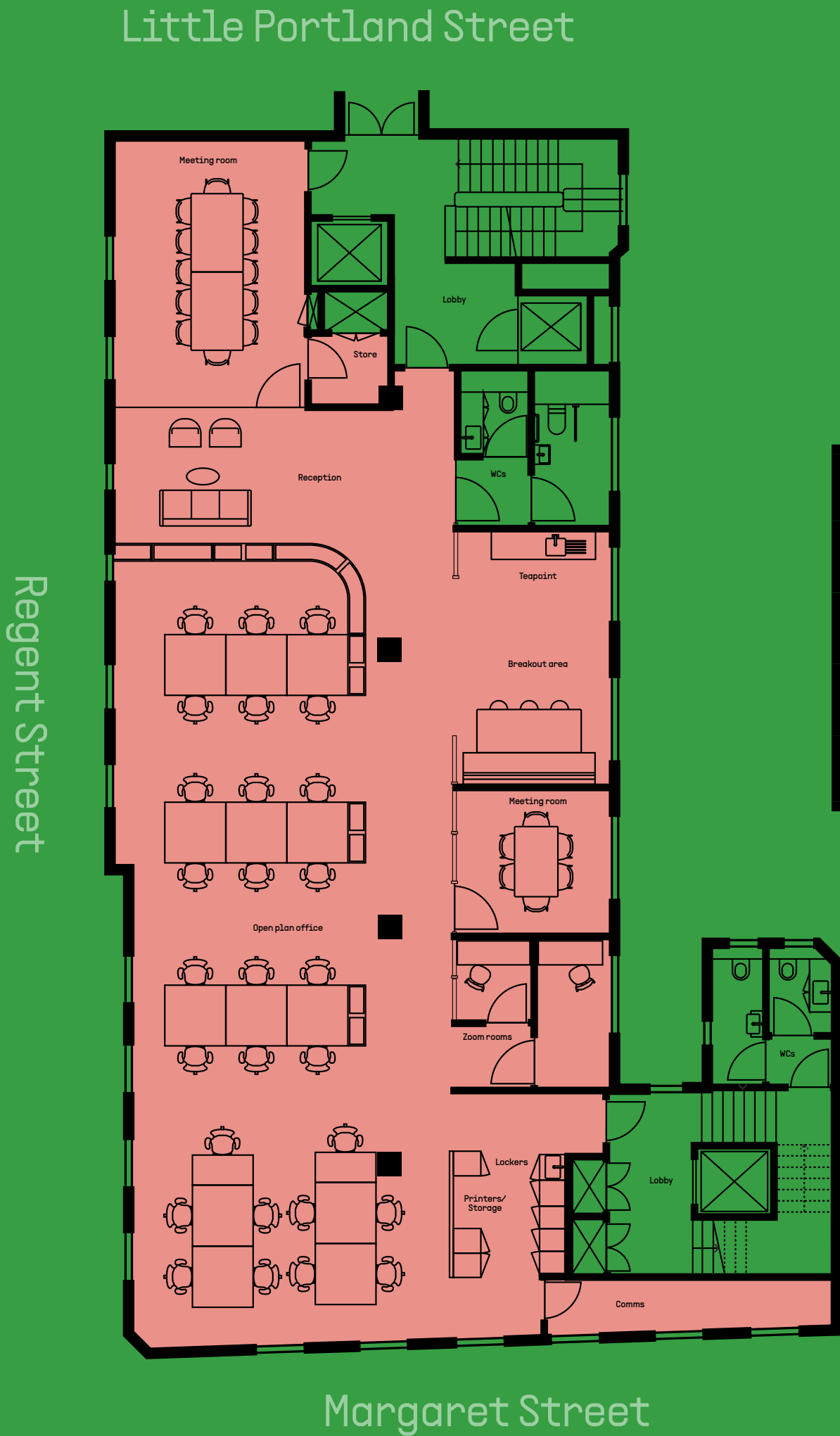
2,659 sq. ft. | 247 sq. m.



Desks	20
Breakout Area	02
Meeting Rooms	02
Zoom Rooms	02
WC	04

6th Floor (Alt)

2,659 sq. ft. | 247 sq. m.



Desks	28
Breakout Area	02
Meeting Rooms	02
Zoom Rooms	02
WC	04



Floor 5 kitchen

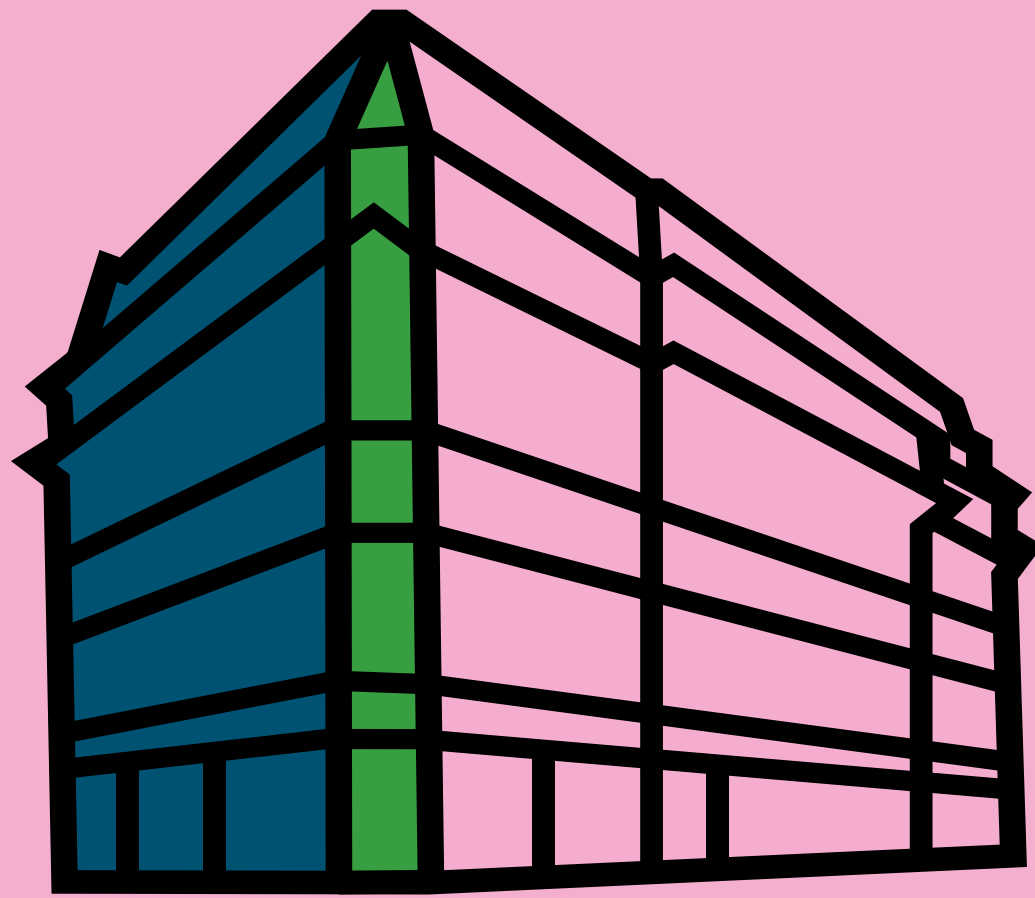


Floor 5 breakout space



Floor 5 Workstation

WHAT IS MANAGED?



RENT

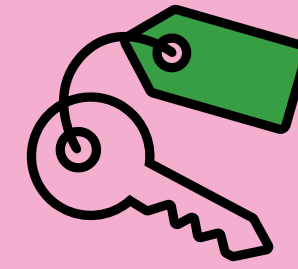
Fully inclusive

LEASE

Minimum 24 months terms

SUPPORT

Dedicated community manager



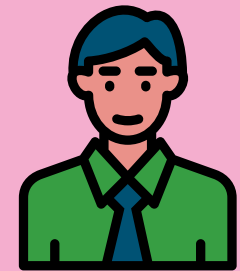
Fully inclusive rent

All occupational costs included



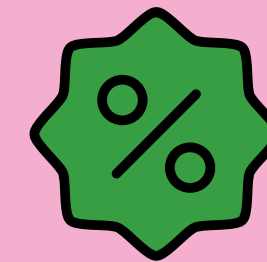
Simple flexible lease

Short-form and short-term agreements



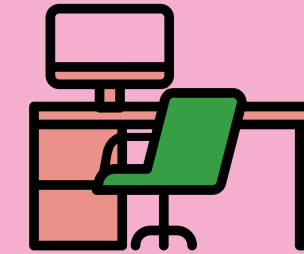
Dedicated community manager

Here to help with all your day to day needs



Exclusive discounts

On meeting rooms, event space and roof terrace



Well designed workspaces

Perfect for focused and collaborative work



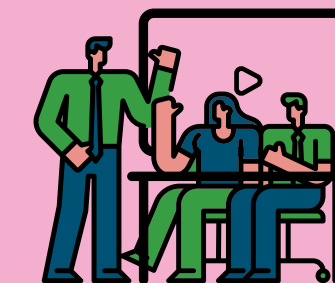
Private office

Your own entrance, kitchenette, open desks, meeting rooms, offices and store room



Plug and play

Ready from day one with internet, crockery and cutlery included so you don't have to worry about a thing



Meeting rooms

AV enabled private meeting rooms

FOR FURTHER INFORMATION PLEASE CONTACT ONE OF OUR AGENTS



George Walker
george.walker@thecrownestate.co.uk
07783 770 849

Sean Cunningham
scunninghamn@edwardcharles.co.uk
07734 924 146

Alka Jotangia
alka.jotangia@thecrownestate.co.uk
07826 946 336

Amy Skidmore
askidmore@edwardcharles.co.uk
07817 985 858

Misrepresentation Disclaimer

1. Particulars: These particulars are not an offer or contract, nor part of one. You should not rely on statements by Edward Charles & Partners and Workplaces in the particulars or by word of mouth or in writing ("information") as being factually accurate about the property, its condition or its value. Neither Edward Charles & Partners and Workplaces nor any joint agent has any authority to make any representations about the property, and accordingly any information given is entirely without responsibility on the part of the agents, seller(s) or lessor(s). 2. Photos/GCI's etc: The photos/GCI's show only certain parts of the property as they appeared at the time they were taken. Areas, measurements and distances given are approximate only. 3. Regulations etc: Any reference to alterations to, or use of, any part of the property does not mean that any necessary planning, building regulations or other consent has been obtained. A buyer or lessee must find out by inspection or in other ways that these matters have been properly dealt with and that all information is correct. 4. VAT: The VAT position relating to the property may change without notice. Designed by Smart Soho. May 2025.