

3 Clarks Mews 10c Hemnall Street

Epping

Council Tax band: E

Tenure: Leasehold

- Chain free
- Short walk to Epping station and high street
- Allocated covered parking
- Open Plan Kitchen / Living
- Beautiful interiors throughout
- First Floor modern apartment
- Great first time buy



Hallway

Open Plan Kitchen / Living / Diner

18' 0" x 17' 9" (5.48m x 5.40m)

Bedroom 1

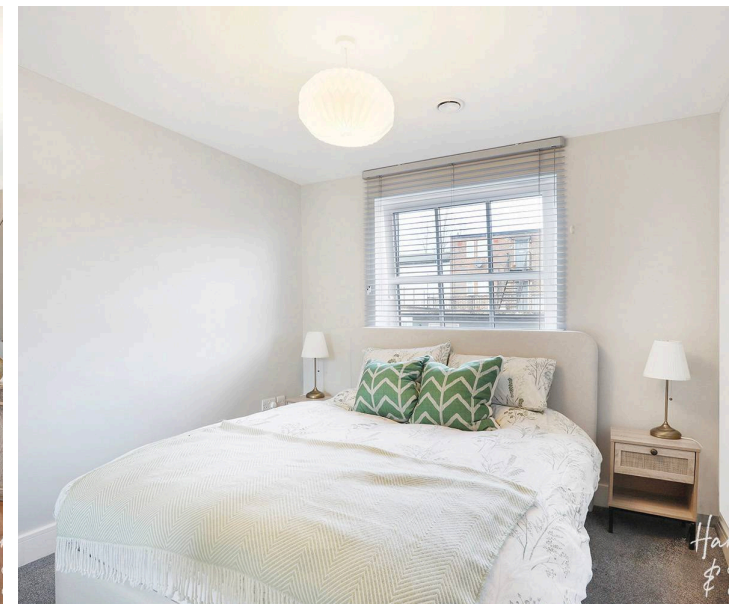
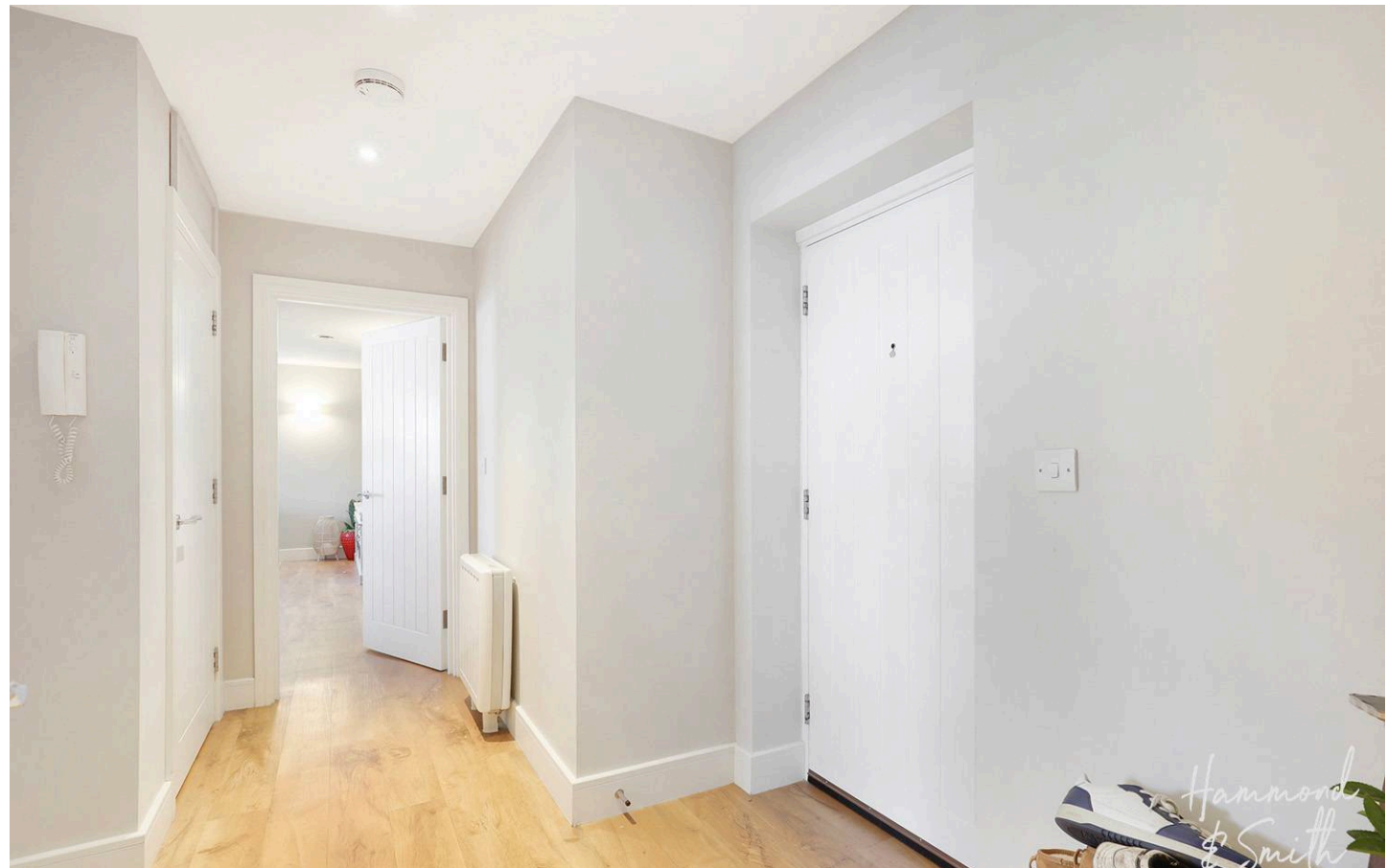
12' 3" x 9' 7" (3.74m x 2.92m)

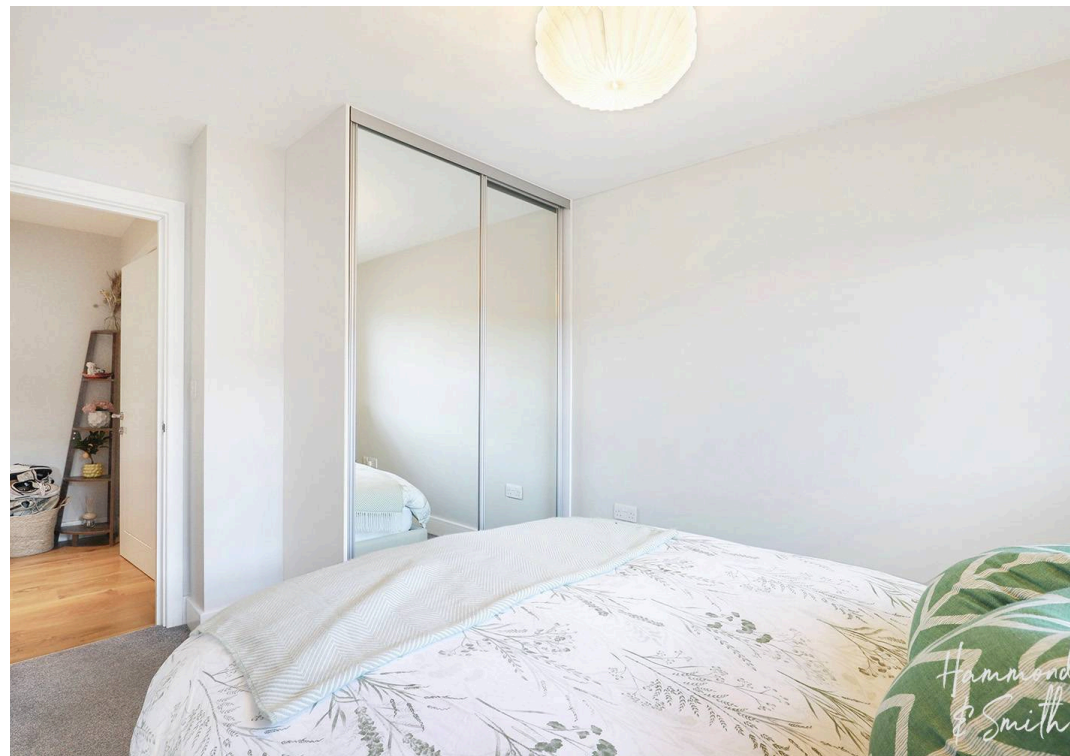
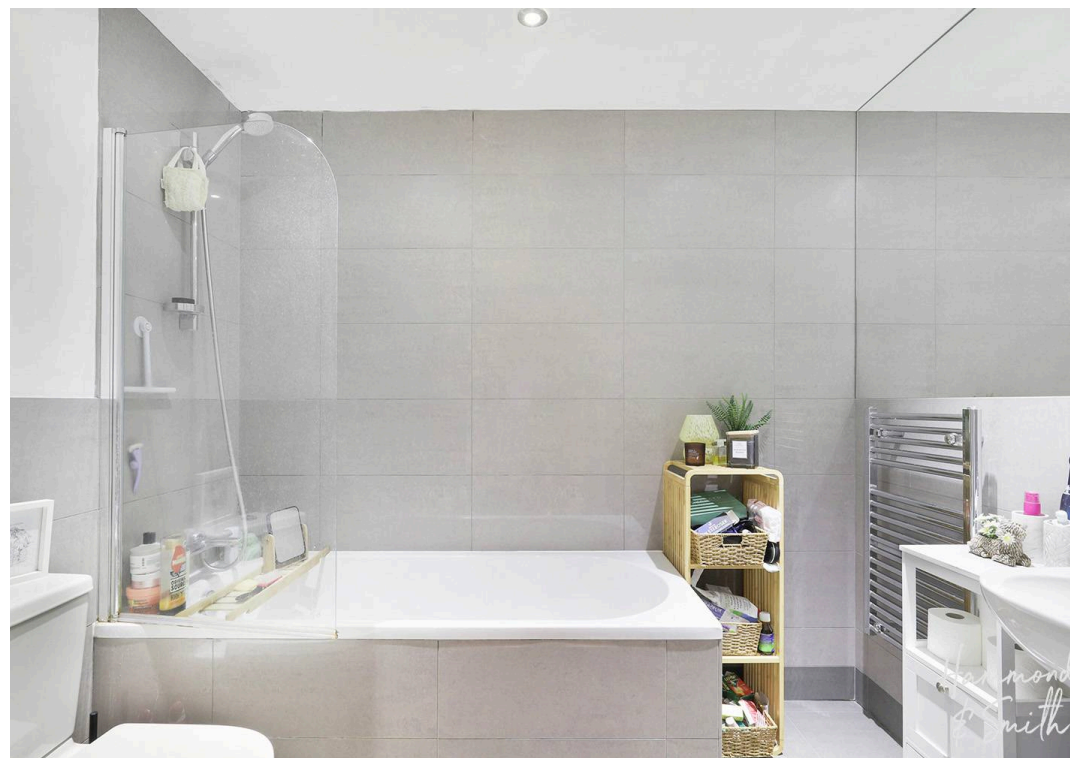
Bedroom 2

12' 3" x 8' 8" (3.74m x 2.64m)

Bathroom

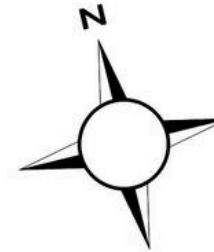
8' 2" x 5' 7" (2.50m x 1.71m)





First Floor

Approx. 62.6 sq. metres (674.3 sq. feet)



Total area: approx. 62.6 sq. metres (674.3 sq. feet)