



31 Orchard Way, Camberley

Camberley

Guide Price £550,000

31 Orchard Way

Camberley, Camberley

Spacious Five-Bedroom Home with a stunning south-west facing garden.

We are delighted to bring this home on Orchard Way to the market for the very first time, this well-appointed five-bedroom semi-detached home offers generous living space, modern conveniences, and a beautifully landscaped garden perfect for family life.

Extended in 2000, the property has been thoughtfully enhanced to include a versatile family room, a practical utility room, and a downstairs WC. Set over two floors, the home provides five well-proportioned bedrooms, making it ideal for growing families or those in need of flexible space.

One of its most impressive features is the expansive south-west facing garden, which underwent a complete renovation in 2023. Designed with both relaxation and entertaining in mind, this outdoor haven enjoys sunlight throughout the day. To the front, ample off-street parking ensures convenience for multiple vehicles.

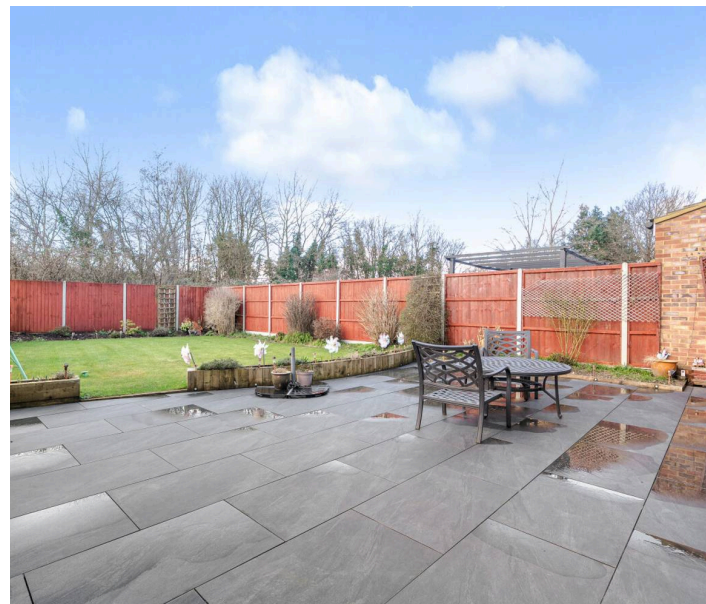
Perfectly positioned near local shops and amenities on Frimley Road, as well as highly regarded schools and Watchetts Recreation Ground, this home offers the best of both comfort and connectivity.

A rare opportunity to secure a much-loved family home in a sought-after location.

Council Tax band: C

Tenure: Freehold

- Close to local shops, amenities, schools and Watchetts Recreation Ground

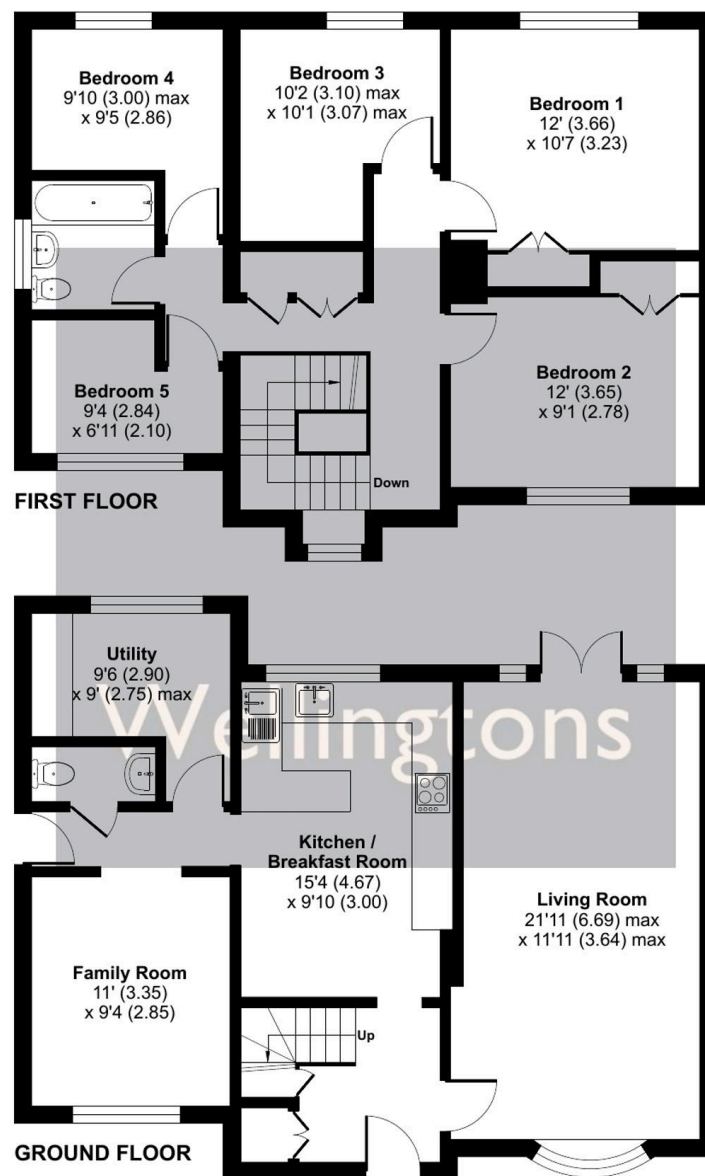




Orchard Way, Camberley, GU15

Approximate Area = 1434 sq ft / 133.2 sq m

For identification only - Not to scale





Agent & Homes

Parkshot House, 5 Kew Road, Richmond - TW9 2PR

020 3598 0808

legan@agentandhomes.com

www.agentandhomes.com/

Wellingtons

IN ASSOCIATION WITH

agent
& homes