

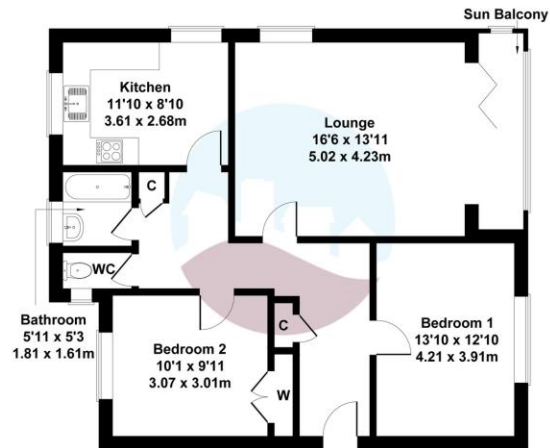
Frinton Office
88 Connaught Avenue
Frinton-on-Sea
Essex CO13 9PT
Tel: (01255) 677688

Harwich Office
147 High Street
Harwich
Essex CO12 3AX
Tel: (01255) 506655



Medusa Court

Approximate Gross Internal Area
818 sq ft - 76 sq m



Not to Scale. Produced by The Plan Portal 2025
For Illustrative Purposes Only.

Energy Efficiency Rating	
Current	Potential
Very energy efficient - lower running costs	
(92+) A	
(81-91) B	
(69-80) C	
(55-68) D	
(39-54) E	
(21-38) F	
(1-20) G	
Not energy efficient - higher running costs	
England & Wales	
EU Directive 2002/91/EC	
WWW.EPC4U.COM	

Council Tax Band
Council Tax Band C

LOCAL AUTHORITY
Tendring District Council



OFFICE
88 Connaught Avenue
Frinton-On-Sea
Essex
CO13 9PT

T: 01255 677688
E: admin@prioryestates.co.uk
W: www.prioryestates.co.uk

Agents Note: Whilst every care has been taken to prepare these particulars, they are for guidance purposes only. All measurements are approximate, are for general guidance purposes only and whilst every care has been taken to ensure their accuracy they should not be relied upon and potential tenant: are advised to recheck the measurements.



Kings Parade

Holland-on-sea, Clacton-on-Sea

Rent: £1,100 pcm

Energy Efficiency Rating C





Accommodation

Accommodation
 Entrance Hall
 Lounge (5.02m x 4.23m)
 Kitchen (3.61m x 2.68m)
 Bedroom One (4.21m x 3.91m)
 Bedroom Two (3.07m x 3.01m)
 WC (1.81m x 0.80m)
 Bathroom (1.81m x 1.61m)

Features

Modern Throughout
 High Specification Finish
 Sea Views
 Sun Balcony
 Two Double Bedrooms
 Gas Central Heating



Property Description

Priory Estates are delighted to present this modern two bedroom first floor apartment perfectly situated in the sought after area of Holland-On-Sea sea front. Boasting many attractive features, including a sun balcony with sea views, two double bedrooms, gas central heating and a garage. With just a short drive to local amenities and Clacton Railway Station, this property is available from March on an unfurnished basis.



Financial Requirements

A minimum of one month's rent, plus a deposit of £1,265 is required in deared funds prior to the commencement of the tenancy.

Term

A minimum of 6 months under an Assured Shorthold Tenancy Agreement, with an extension to the contract should both parties agree.

Restrictions

Certain Restrictions have been placed on this property, please ask for details.