



**8 King Edward Mobile Home Park Baddesley Road, North Baddesley**  
Southampton

**£250,000**





## 8 King Edward Mobile Home Park Baddesley Road

North Baddesley, Southampton

Brand New 40 x 20 goodwood stately Albion

Introduced at the National Park and Holiday Homes Show, Newbury 2015, the stylishly revamped Goodwood park home impressed all who saw it. A long-established stalwart of the large and varied Stately-Albion canon, the Goodwood has received an impressive facelift, both freshening its looks and bringing it in line with the clean and modern design of Stately's impressive and acclaimed Woburn model.

Featuring compound bay windows and patio doors, along with a walk-in bay, the looks are further enhanced by its complementary feature cladding. Inside, this spacious and well-appointed home defiantly belies its billing as a budget-friendly home, it's stylish and exceptionally well-equipped kitchen being fully loaded with the latest appliances.

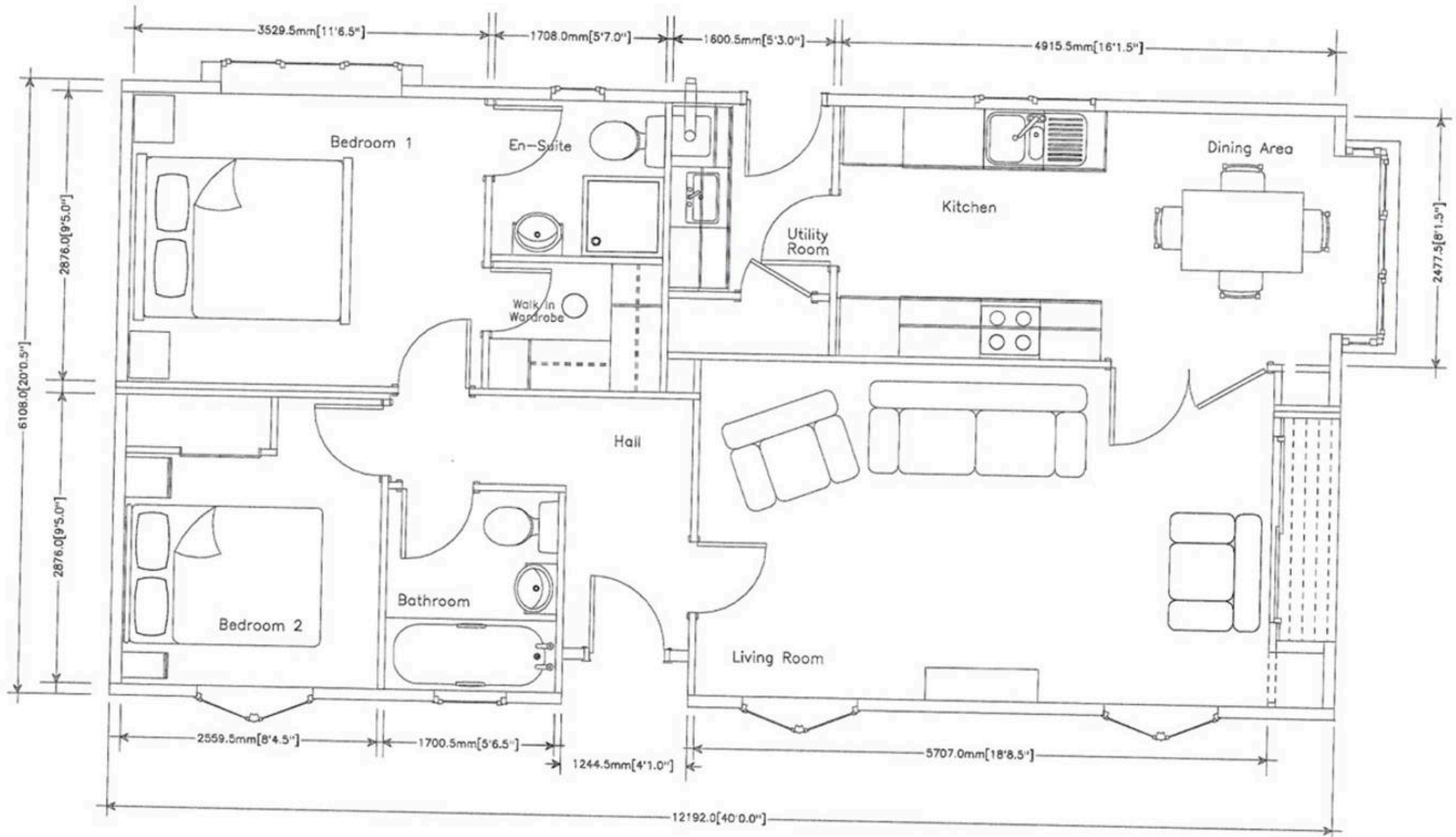
With hardwood furniture and a spacious walk-in wardrobe to the master bedroom, the Goodwood continues to impress with its attention to detail and full use of available space.

The Goodwood is reborn...

The New Goodwood is a staple in the Stately-Albion roster. After receiving its second face lift since its conception, it's easy to see why this home is so popular among our customers. Feature cladding has been added to the exterior of the home, highlighting its stand out features. Compound bay windows, patio doors and the

# THE GOODWOOD

40' x 20'







## 8 King Edward Mobile Home Park Baddesley Road

North Baddesley, Southampton

Council Tax band: A

Tenure: Leasehold

- Jordan Marks Estates At Your Service 7 Days a Week 24 Hours a Day
- Brand New
- 10 Year Warranty
- Pets Allowed
- Bottle gas Pitch fee is £244.40 per month, exl council tax, water







## Jordan Marks estates

Jordan Marks Estates, 16 High Street - BH23 1AY

01202 484444 • [george@jordanmarksestates.co.uk](mailto:george@jordanmarksestates.co.uk) • <http://jordanmarksestates.co.uk>

JM  
Jordan Marks Estates