



2 Bedroom Semi-Detached House Littlefield Close, Kingston Upon Thames. £650,000 Freehold

Brand New and Exclusive Two Bedroom Semi Detached family home in Littlefield Close, Kingston upon Thames.
2 bedroom family home offering 886 sq ft of internal living space.

Set in a residential cul-de-sac location, this architecturally designed brand new semi-detached home has been built with a fusion of Victorian style features and modern designs.

Open plan spacious reception room with a high specification designer kitchen and French doors opening to the landscaped rear garden. 2 Spacious bedrooms and 2 luxury bathrooms.

Kingston upon Thames has everything, with glorious parkland and the River Thames on the doorstep

A flourishing community, fantastic local amenities and excellent schools including Tiffin and Kingston Grammar Schools.

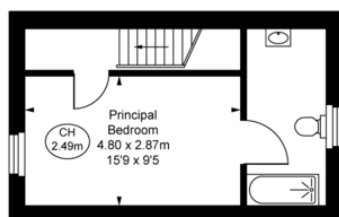
A fast and easy commute to the capital of London from Kingston upon Thames mainline station.

WWW.STACKANDBONNER.COM

020 8974 8844

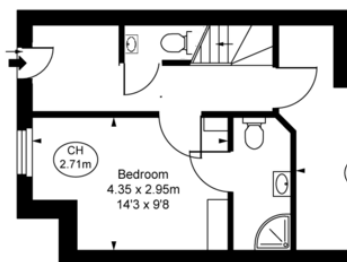
sales@stackandbonner.com





First Floor
Approximate Gross Internal Area
26.24 sq m / 282 sq ft

Littlefield Close, KT1
Approximate Gross Internal Area
82.30 sq m / 886 sq ft
(Including restricted height
under 1.5m c = = =)
(CH = Ceiling Heights)



Ground Floor
Approximate Gross Internal Area
56.06 sq m / 603 sq ft

Garden
14.17 x 4.97m
46'6" x 16'4"

FULHAMPERFORMANCE
PRECISION YOU CAN TRUST

This plan is not to a given scale. A detailed layout plan with dimensions is available on request. All quoted measurements and areas are within 1% tolerance and have been prepared in accordance with industry standards as defined in the RICS Code of Measuring Practice © Fulham Performance

- Brand New, 2 Bedroom Semi-Detached Family Home
- Designed with a fusion of Victorian features and modern designs
- Open Plan Living / Kitchen / Dining Room
- Shaker Style Kitchen with Wood Worktops
- French Doors opening to the private garden
- 2 Luxury Bathrooms
- 886 sq ft
- Private Garden
- 10 year new build warranty