

Cowslip Meadow, Draycott

aksresidential.com

Offers in excess of
£140,000



This property at a glance:



1



2



2



1



C



Watch the video



Cowslip Meadow, Draycott



Mikaela says:

"What a fantastic apartment! I love the layout with the modern kitchen being separate to the living room diner. You'd often find apartments are open plan, so I love that this one has separated areas. The living room diner is so spacious! Made even more bright and welcoming by having the lovely juliet balcony to open on sunny days. Not only is there a generously sized family bathroom, there's also an en-suite to a spacious master bedroom, as well as a further good sized double bedroom. There's plenty of storage that can be accessed from the hallway and the benefit of access to the loft as well, as this apartment is on the top floor! Another rare but great detail is that there's even a garage and an allocated parking space just in front of it, only a short distance from the main entrance. All in all a great property in a fantastic desirable Derbyshire village"



Cowslip Meadow, Draycott



Did you spot...

This well presented 2 bed top floor apartment has a garage and allocated parking



A message from the seller:

"Welcome to my home. I have owned the property for 15 years. It is a great space with a really good community in a lovely village in Derbyshire. There are some great local pubs within walking distance and lots of open green spaces for walking. There a great commuter links nearby. At Christmas the village square holds a market which is worth a visit. I've really enjoyed my time living here, I'm sure you will too."





Floor Plan



aksresidential.com

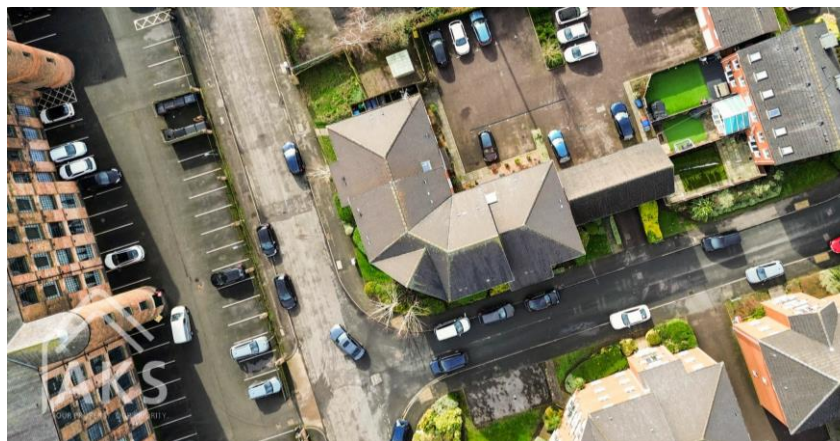
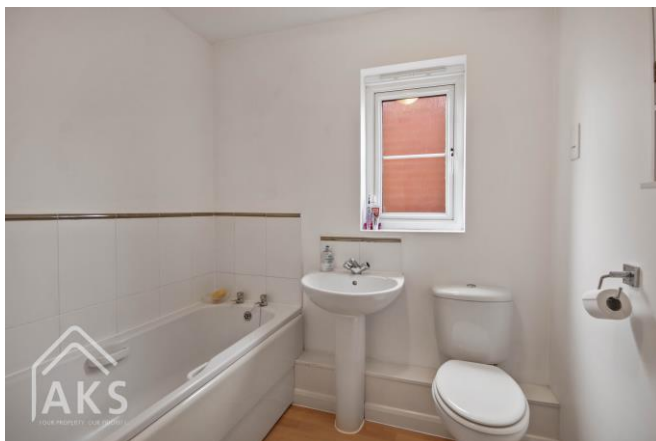
Ground Floor

Approx. 58.5 sq. metres (629.4 sq. feet)



Energy Performance Certificate

Total area: approx. 58.5 sq. metres (629.4 sq. feet)



Key Features:

- EPC RATING C
- TOP FLOOR 2 BEDROOM APARTMENT
- LIVING ROOM DINER
- SEPARATE KITCHEN
- GARAGE WITH PARKING IN FRONT
- DESIRABLE AREA



About the area:

Draycott is a quiet village situated between Derby and Long Eaton in the Erewash district of Derbyshire, close to the neighbouring village of Borrowash. The river Derwent is just a short walk from the village, giving a variety of walking routes. Within the village, there is a tea rooms and post office with further amenities in neighbouring Borrowash and Breaston. For activities, there is a playing fields and park as well as a Table Tennis Centre. The A52 is a short drive from the village giving easy and quick access into the City Centre and up to the M1.



Schools:

The local Primary school is Draycott Community and the local secondary school is Friesland School.



200+ 5 star Google Reviews



Don't miss out on the chance to own this incredible property!

To book a viewing with **Mikaela** call **01332 30 30 30**

[Click here](#) to watch the property video

