







Hiltons Estates brings to the market this Brilliant Opportunity to purchase a Spacious 1 bedroom apartment located in Southall, UB2, with Long Lease Remaining years! The property consists of a master bedroom, family bathroom, storage and an open plan living/kitchen/dining area. There are patio doors in the living area leading to a private garden section with views overlooking the well maintained communal garden spaces. The property comes with a secure gated entry space and phone entry system. This property is located in Urban Southall and walking distance to Southall Rail Station (Cross Rail Elizabeth Line), local shops, schools and amenities. There are ample bus links and good transport links to Heathrow, Central London, M4, M25, M40 and A40! This is an Excellent opportunity for First Time Buyers, Commuters and Investors!!! Viewings Highly Recommended!!! Book Now! Call for further details.

Spacious 1 bed, 1 bath, apartment located in Southall, UB2, with Long Lease

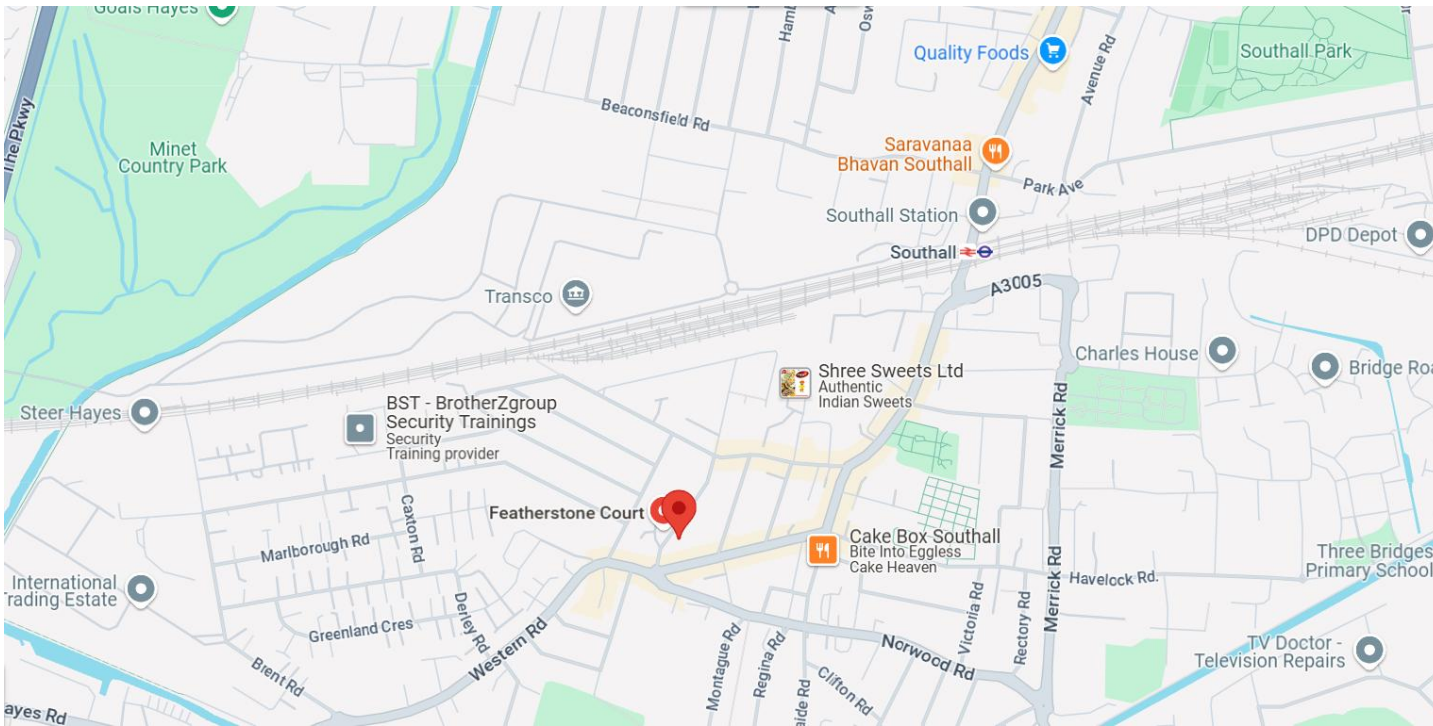
Secure gated entry space, and phone entry system

Private garden section and communal gardens

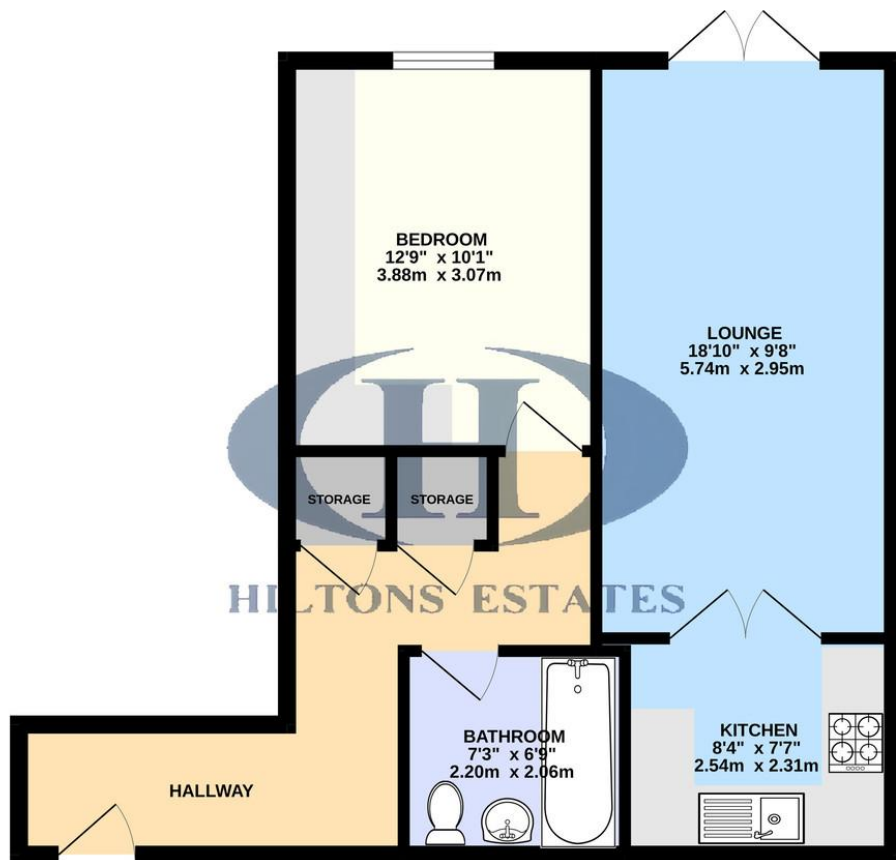
Located in Urban Southall and walking distance to Southall Crossrail

Excellent opportunity for First Time Buyers, Commuters and Investors!!! Viewings Highly Recommended!

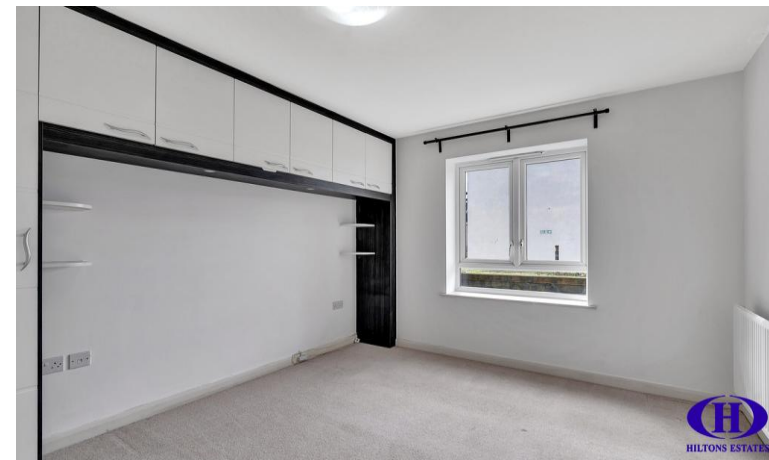




GROUND FLOOR  
549 sq.ft. (51.0 sq.m.) approx.



TOTAL FLOOR AREA : 549 sq.ft. (51.0 sq.m.) approx.  
Whilst every attempt has been made to ensure the accuracy of the floorplan contained here, measurements of doors, windows, rooms and any other items are approximate and no responsibility is taken for any error, omission or mis-statement. This plan is for illustrative purposes only and should be used as such by any prospective purchaser. The services, systems and appliances shown have not been tested and no guarantee as to their operability or efficiency can be given.  
Made with Metropix ©2025



Score	Energy rating	Current	Potential
92+	A		
81-91	B	82 B	83 B
69-80	C		
55-68	D		
39-54	E		
21-38	F		
1-20	G		

Hiltons Estates, 137 Western Road  
Southall, UB2 5HN

[www.hiltons-estates.com](http://www.hiltons-estates.com)  
email: [harvin@hiltons-estates.com](mailto:harvin@hiltons-estates.com)  
0208 867 9555 / 07961 527301

Agents Note: Whilst every care has been taken to prepare these sales particulars, they are for guidance purposes only. All measurements are approximate are for general guidance purposes only and whilst every care has been taken to ensure their accuracy, they should not be relied upon and potential buyers are advised to recheck the measurements.