



Drayton Road, London NW10

£435,000 Leasehold

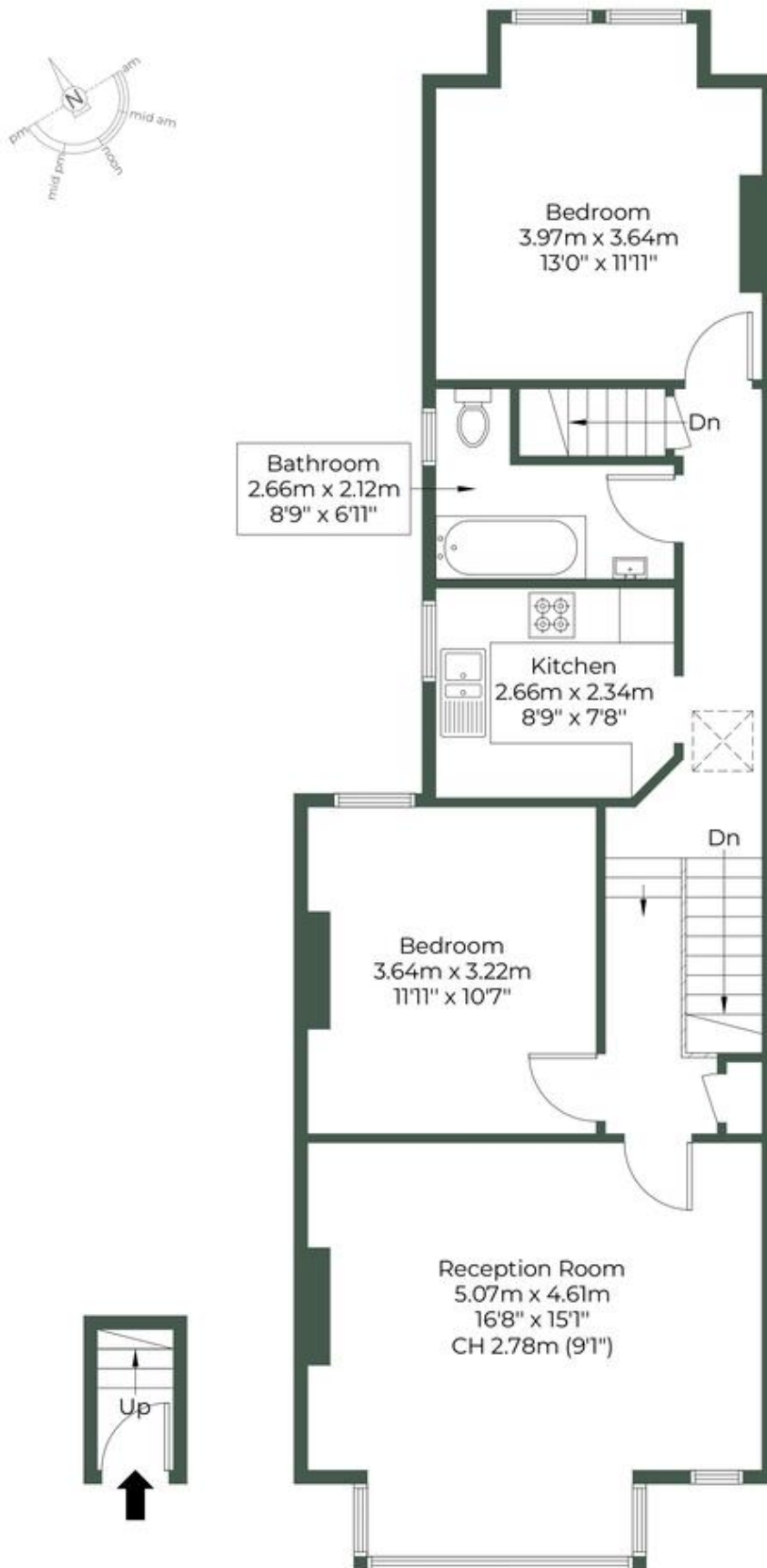
Set within a charming period property, this beautifully renovated two-bedroom home offers a perfect blend of classic character and modern comfort. Spanning an impressive 778 square feet, the property boasts generous proportions, bright and airy interiors, and stylish upgrades throughout.

The heart of the home is the brand-new kitchen and bathroom, finished to a high standard with contemporary fittings and sleek design. Double glazing throughout enhances energy efficiency and ensures a peaceful living environment. Both bedrooms are well-sized doubles, offering ample space for relaxation and storage.

- Period property
- Short walk to Roundwood Park
- Two double bedrooms
- Bright and Airy
- Good location
- Access to garden
- Newly Renovated
- Brand new kitchen and bathroom
- Double glazing throughout
- 778 square foot

DRAYTON ROAD, NW10 4DH

Approximate Gross Internal Area = 72.3 sq.m / 778 sq.ft



Ground Floor First Floor

M MILE

MONEY LAUNDERING REGULATIONS 2003: Intending purchasers will be asked to produce identification documentation at a later stage and we would ask for your co-operation in order that there will be no delay in agreeing the sale.

General: While we endeavour to make our sales particulars fair, accurate and reliable, they are only a general guide to the property and, accordingly, if there is any point which is of particular importance to you, please contact the office and we will be pleased to check the position for you, especially if you are contemplating travelling some distance to view the property.

Measurements: These approximate room sizes are only intended as general guidance. You must verify the dimensions carefully before ordering carpets or any built-in furniture.

Services: Please note we have not tested the services or any of the equipment or appliances in this property, accordingly we strongly advise prospective buyers to commission their own survey or service reports before finalising their offer to purchase.